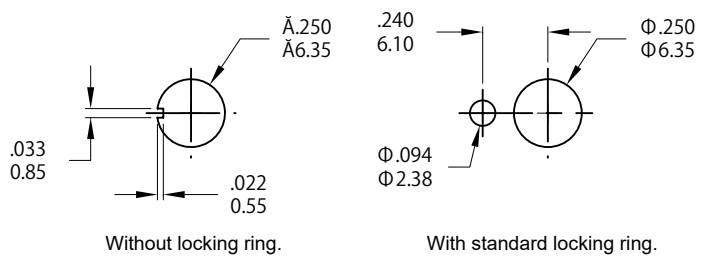
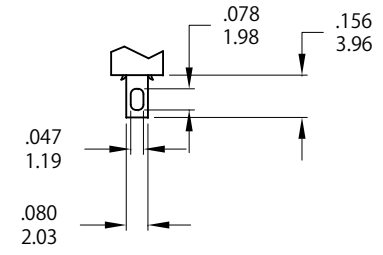


Model No.	POS.1	POS.2	POS.3
1MS1	ON	NONE	ON
Term. Comm.	2-3	N/A	2-1
SCHEMATIC			

SWITCH FUNCTION



PANEL MOUNTING



SOLDER LUG

**SPECIFICATIONS**

**MECHANICAL LIFE:** 40,000 make-and-break cycles.  
**CONTACT RESISTANCE:** 10 mΩ max. initial @ 2-4VDC  
 100mA for both silver and gold plated contacts.  
**INSULATION RESISTANCE:** 1,000 MΩ min.  
**DIELECTRIC STRENGTH:** 1,000 Vrms min. @sea level.  
**OPERATING TEMPERATURE:** -40°C to 85°C.

**MATERIALS**

**CASE:** Diallyl phthalate (DAP) (UL94v-0).  
**ACTUATOR:** Brass,chrome plated.  
**BUSHING:** Brass,nickel plated.  
**HOUSING:** Stainless Steel.  
**TERMINAL/CONTACT:** Copper alloy.  
**RoHS & Lead Free**

	CONTACT PLATING	TERMINAL PLATING	RATINGS
Q	Silver	Q = Silver	5 Amps @120 VAC or 28VDC
C	Gold over Silver	C = Gold over silver	2 Amps @250 VAC
R	Gold	R = Gold	0.4 Volt-Amps(VA) max. @20V max. (AC or DC)

**COSLAND COSLAND CO.,LTD.**  
 E-MAIL: cosland@cosland.com  
 TEL: 886-2-2745 8908. FAX: 886-2-2765 3456.

	符號	原尺寸	修改後尺寸	變更日期	SCALE (比例): 3:2
1	(A)				TOLERANCE (公差): 0.00 mm ± 0.25mm 0.0 mm ± 0.40mm ANGULAR : ±5° FILE NAME : 1MSP2954
2	(B)				
3	(C)				
4	(D)				
5	(E)				

TITLE	Miniature Toggle Switches		SIZE	A4
圖名			圖紙	
DWG NO.	1MS1T2B1M1QNS		UNIT	inch
圖號			單位	mm
REV.	A	DATE	JUL - 31 - 2017	SHEET
版本		日期		張數
CHECKED BY			DRAWN BY	IRENE
審核			製圖	