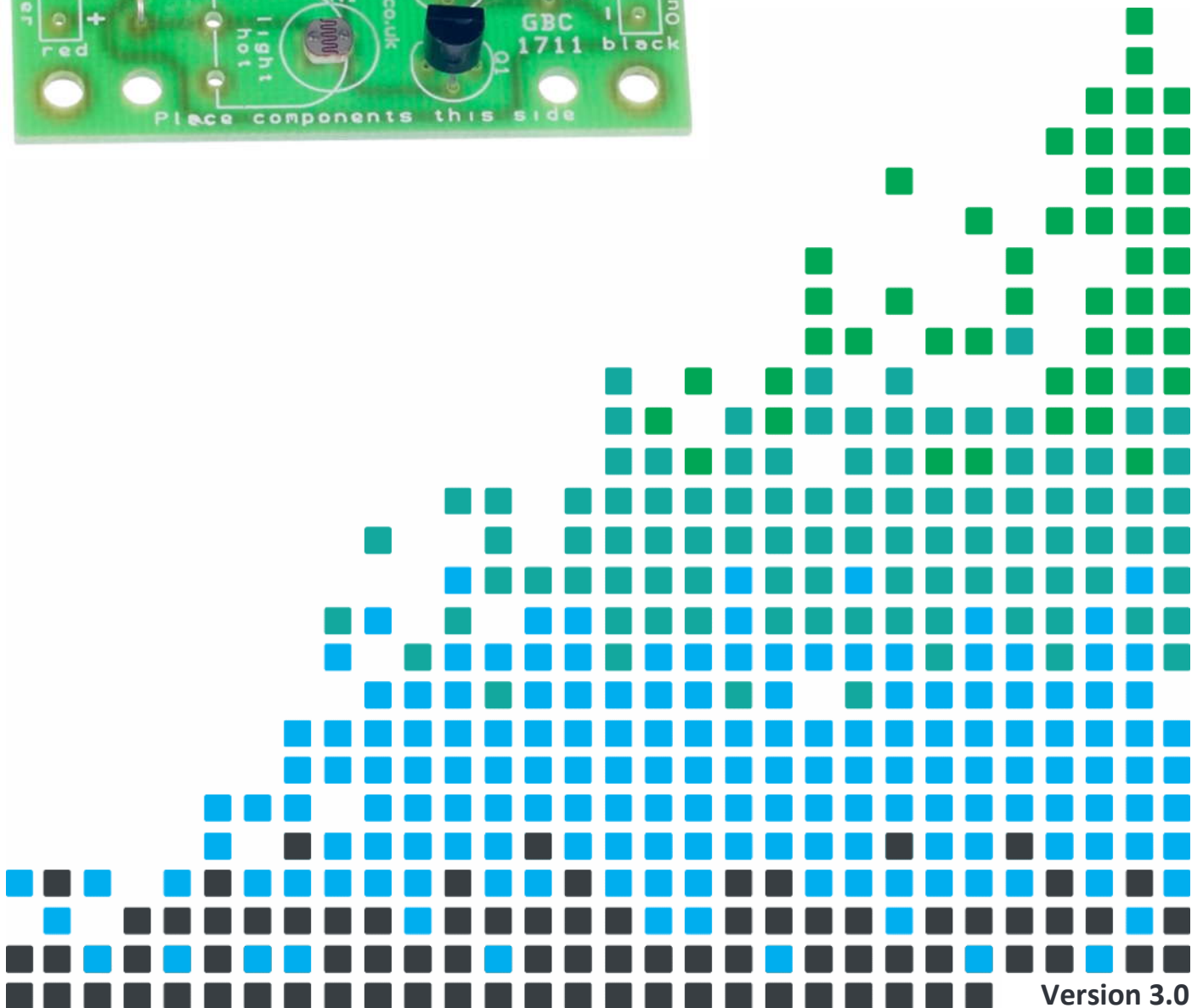
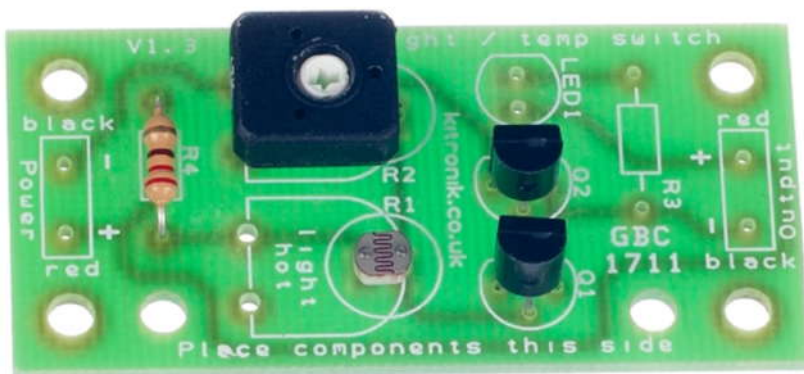


CONTROL ELECTRONIC CIRCUITS WITH THE OUTPUT OF THIS

LIGHT ACTIVATED SWITCH



Index of Sheets

TEACHING RESOURCES

- Index of Sheets
- Introduction
- Technical Specification
- Soldering in 8 Steps
- Resistor Values
- Sensing Light – Photodetectors
- Using a Transistor as a Switch
- Darlington Pair

ESSENTIAL INFORMATION

- Build Instructions – Light Activated
- Build Instructions – Dark Activated
- Checking Your Circuit
- Testing the PCB
- How the Light Switch Works – Dark Activated
- How the Light Switch Works – Light Activated
- Applications
- Online Information



Introduction

About the project kit

Both the project kit and the supporting material have been carefully designed for use in KS3 Design and Technology lessons. The project kit has been designed so that even teachers with a limited knowledge of electronics should have no trouble using it as a basis from which they can form a scheme of work.

Using the booklet

This booklet is intended as an aid for teachers when planning and implementing their scheme of work.

Please feel free to print any pages of this booklet to use as student handouts in conjunction with Kitronik project kits.

Support and resources

You can also find additional resources at www.kitronik.co.uk. There are component fact sheets, information on calculating resistor and capacitor values, puzzles and much more.

Kitronik provide a next day response technical assistance service via e-mail. If you have any questions regarding this kit or even suggestions for improvements, please e-mail us at:

support@kitronik.co.uk

Alternatively, phone us on 0845 8380781.

Technical Specification

Supply Voltage

Minimum = 3V

Maximum = 12V

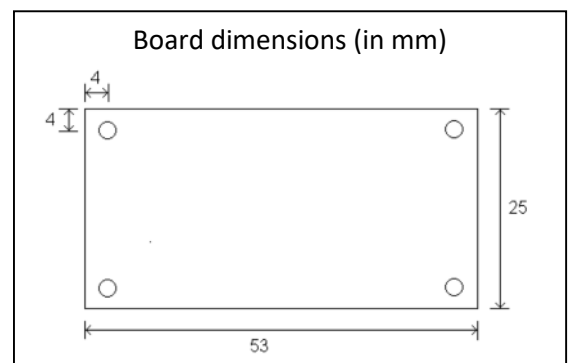
A supply voltage of 3V to 5V allows for better adjustment.

Output voltage

Vout = Supply voltage less 0.9V

Output current

Maximum = 0.5A



Guidance note

You should ensure that you have a stable power source when using the output to switch on high output loads. This is because if the power source is unable to provide enough power, this may result in a supply voltage dip and cause output to switch off. At this point the voltage is likely to recover and turns the output on again. The output would then be in a state where it is rapidly switching on and off.

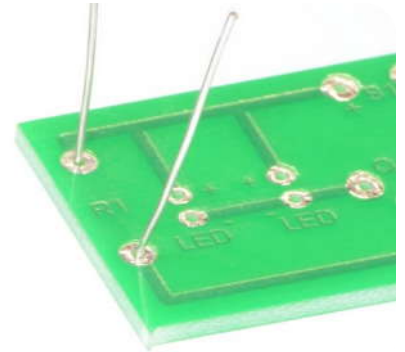


Soldering in 8 Steps

1

INSERT COMPONENT

Place the component into the board, making sure that it goes in the correct way around, and the part sits closely against the board. Bend the legs slightly to secure the part. Place the board so you can access the pads with a soldering iron.



2

CLEAN SOLDERING IRON

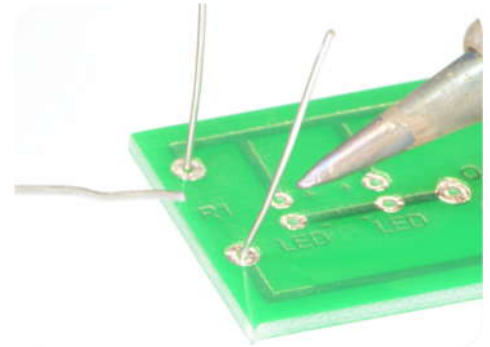
Make sure the soldering iron has warmed up. If necessary use a brass soldering iron cleaner or damp sponge to clean the tip.



3

PICKUP IRON AND SOLDER

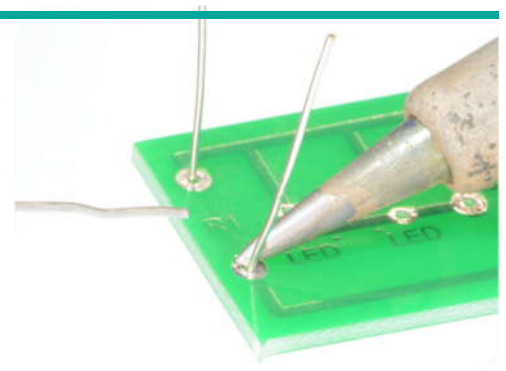
Pick up the Soldering Iron in one hand, and the solder in the other hand.



4

HEAT PAD

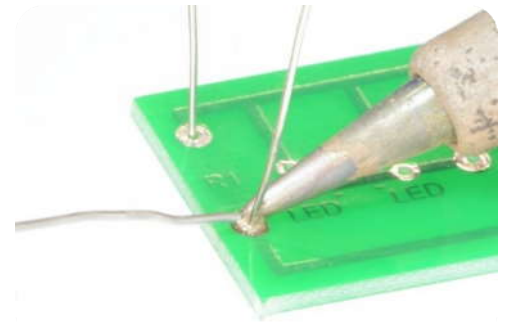
Place soldering iron tip on the pad.



5

APPLY SOLDER

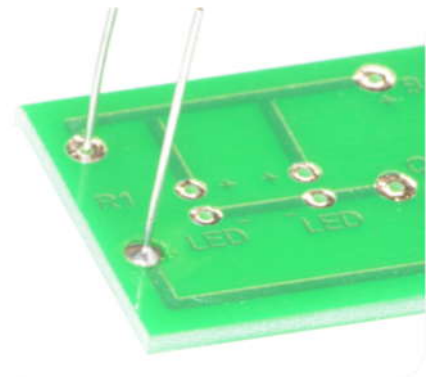
Feed a small amount of solder into the joint. The solder should melt on the pad and flow around the component leg.



6

STOP SOLDERING

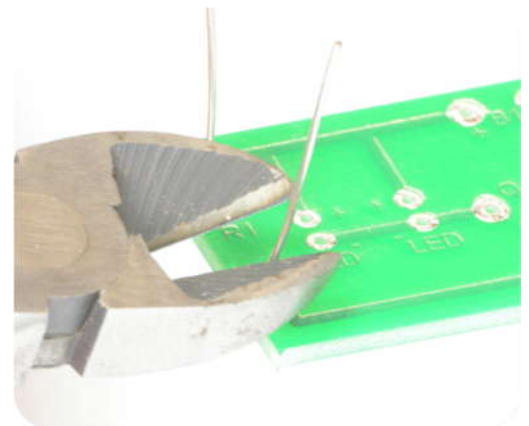
Remove the solder, and then remove the soldering iron.



7

TRIM EXCESS

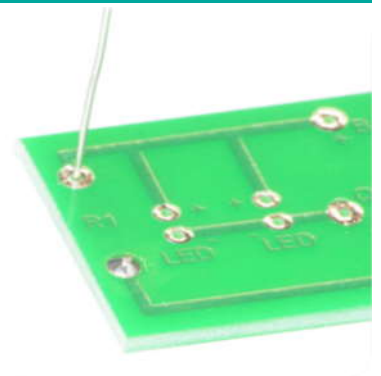
Leave the joint to cool for a few seconds, then using a pair of cutters trim the excess component lead.



8

REPEAT

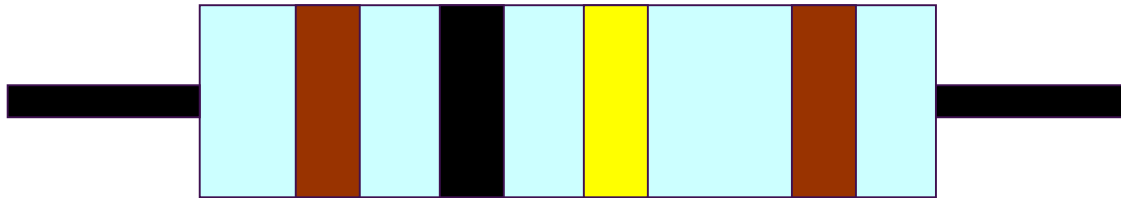
Repeat this process for each solder joint required.



Resistor Values

A resistor is a device that opposes the flow of electrical current. The bigger the value of a resistor, the more it opposes the current flow. The value of a resistor is given in Ω (ohms) and is often referred to as its 'resistance'.

Identifying resistor values



Band Colour	1st Band	2nd Band	Multiplier x	Tolerance
Silver			$\div 100$	10%
Gold			$\div 10$	5%
Black	0	0	1	
Brown	1	1	10	1%
Red	2	2	100	2%
Orange	3	3	1000	
Yellow	4	4	10,000	
Green	5	5	100,000	
Blue	6	6	1,000,000	
Violet	7	7		
Grey	8	8		
White	9	9		

Example: Band 1 = Red, Band 2 = Violet, Band 3 = Orange, Band 4 = Gold

The value of this resistor would be:

$$\begin{aligned}
 & \mathbf{2} \text{ (Red)} \mathbf{7} \text{ (Violet)} \times \mathbf{1,000} \text{ (Orange)} & = 27 \times 1,000 \\
 & & = \mathbf{27,000} \text{ with a 5\% tolerance (gold)} \\
 & & = \mathbf{27K\Omega}
 \end{aligned}$$

Too many zeros?

Kilo ohms and mega ohms can be used:

$$1,000\Omega = 1K$$

$$1,000K = 1M$$

Resistor identification task

Calculate the resistor values given by the bands shown below. The tolerance band has been ignored.

1st Band	2nd Band	Multiplier x	Value
Brown	Black	Yellow	
Green	Blue	Brown	
Brown	Grey	Yellow	
Orange	White	Black	



Calculating resistor markings

Calculate what the colour bands would be for the following resistor values.

Value	1st Band	2nd Band	Multiplier x
180 Ω			
3,900 Ω			
47,000 (47K) Ω			
1,000,000 (1M) Ω			

What does tolerance mean?

Resistors always have a tolerance but what does this mean? It refers to the accuracy to which it has been manufactured. For example if you were to measure the resistance of a gold tolerance resistor you can guarantee that the value measured will be within 5% of its stated value. Tolerances are important if the accuracy of a resistors value is critical to a design's performance.

Preferred values

There are a number of different ranges of values for resistors. Two of the most popular are the E12 and E24. They take into account the manufacturing tolerance and are chosen such that there is a minimum overlap between the upper possible value of the first value in the series and the lowest possible value of the next. Hence there are fewer values in the 10% tolerance range.

E-12 resistance tolerance ($\pm 10\%$)											
10	12	15	18	22	27	33	39	47	56	68	82

E-24 resistance tolerance ($\pm 5\%$)											
10	11	12	13	15	16	18	20	22	24	27	30
33	36	39	43	47	51	56	62	68	75	82	91



Sensing Light – Photodetectors

To sense light levels in electronics requires a component which is sensitive to light. 2 types of photodetector capable of doing this are Light Dependent Resistors (LDR) and Phototransistors.

An LDR is a component that has a resistance that falls with an increase in the light intensity falling upon the device.

A Phototransistor is a transistor whose base is exposed to light, rather than being wired to a pin.

As the light level increases this activates the transistor, in a similar manner to increasing the base current of a regular transistor.

The resistance of an LDR may typically change by 4000x between Daylight and darkness.

A Phototransistor's gain varies with the amount of light it is exposed to, typically from 100 to 1500

You can see that there is a large variation between these figures depending on the light level. With appropriate circuits these changes can be used to control other electronics.

Applications

There are many applications for photodetectors. These include:

Lighting switch

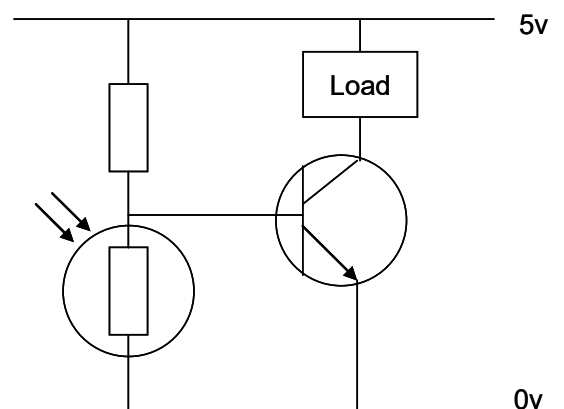
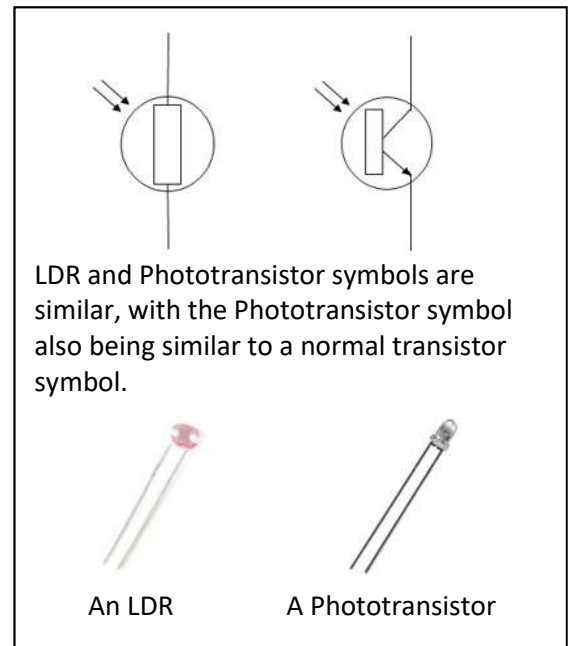
The most obvious application is to automatically turn on a light at certain light level. An example of this could be a street light.

Camera shutter control

Photodetectors can be used to control the shutter speed on a camera. The photodetector would be used to measure the light intensity and then set the camera shutter speed to the appropriate level.

Example

The circuit shown right shows a simple way of constructing a circuit that turns on when it goes dark. The increase in resistance of the LDR in relation to the other resistor, which is fixed as the light intensity drops, will cause the transistor to turn on. The value of the fixed resistor will depend on the LDR used, the transistor used and the supply voltage.



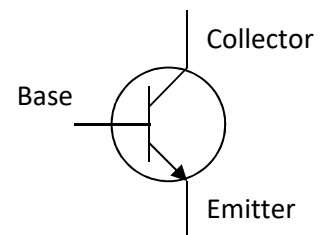
Using a Transistor as a Switch

Overview

A transistor in its simplest form is an electronic switch. It allows a small amount of current to switch a much larger amount of current either on or off. There are two types of transistors: NPN and PNP. The different order of the letters relate to the order of the N and P type material used to make the transistor. Both types are available in different power ratings, from signal transistors through to power transistors. The NPN transistor is the more common of the two and the one examined in this sheet.

Schematic symbol

The symbol for an NPN type transistor is shown to the right along with the labelled pins.



Operation

The transistor has three legs: the base, collector and the emitter. The emitter is usually connected to 0V and the electronics that is to be switched on is connected between the collector and the positive power supply (Fig A). A resistor is normally placed between the output of the Integrated Circuit (IC) and the base of the transistor to limit the current drawn through the IC output pin.

The base of the transistor is used to switch the transistor on and off. When the voltage on the base is less than 0.7V, it is switched off. If you imagine the transistor as a push to make switch, when the voltage on the base is less than 0.7V there is not enough force to close the switch and therefore no electricity can flow through it and the load (Fig B). When the voltage on the base is greater than 0.7V, this generates enough force to close the switch and turn it on. Electricity can now flow through it and the load (Fig C).

Fig A – Basic transistor circuit

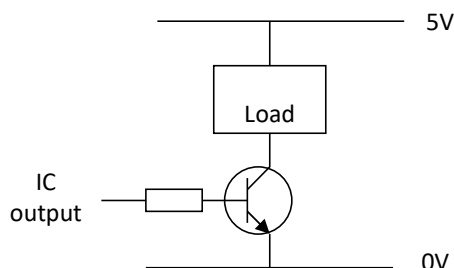


Fig B – Transistor turned off

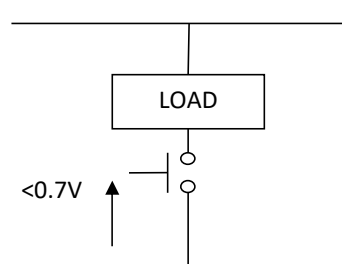
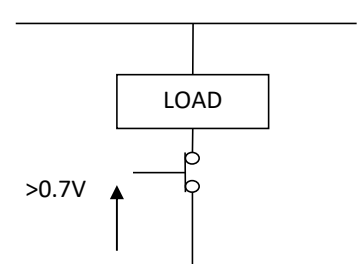
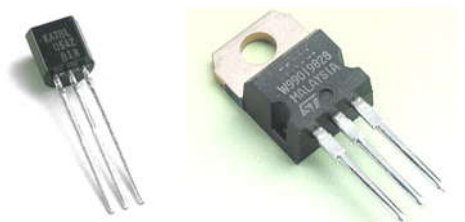


Fig C – Transistor turned on



Current rating

Different transistors have different current ratings. The style of the package also changes as the current rating goes up. Low current transistors come in a 'D' shaped plastic package, whilst the higher current transistors are produced in metal cans that can be bolted onto heat sinks so that they don't over heat. The 'D' shape or a tag on the metal can is used to work out which pin does what. All transistors are wired differently so they have to be looked up in a datasheet to find out which pin connects where.



Darlington Pair

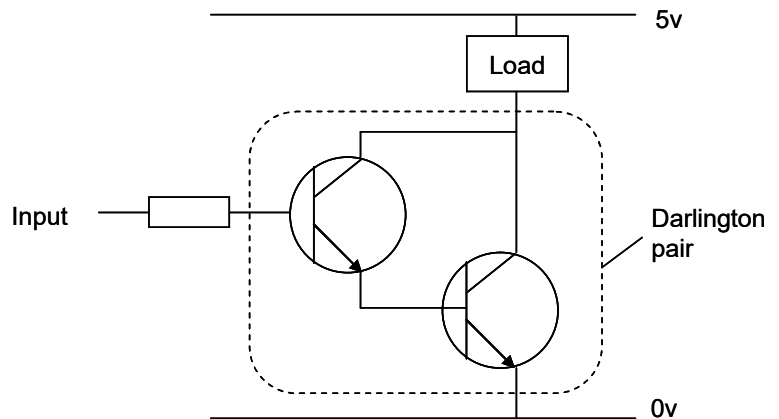
What is a Darlington Pair?

A Darlington Pair is two transistors that act as a single transistor but with a much higher current gain.

What is current gain?

Transistors have a characteristic called 'current gain'. This is referred to as its h_{FE} .

The amount of current that can pass through the load when connected to a transistor that is turned on equals the **input current x the gain of the transistor (h_{FE})**.



The current gain varies for different transistor and can be looked up in the datasheet for the device. Typically, it may be 100. This would mean that the current available to drive the load would be 100 times larger than the input to the transistor.

Why use a Darlington Pair?

In some applications, the amount of input current available to switch on a transistor is very low. This may mean that a single transistor may not be able to pass sufficient current required by the load.

As stated earlier, this equals the **input current x the gain of the transistor (h_{FE})**. If it is not possible to increase the input current, then we need to increase the gain of the transistor. This can be achieved by using a Darlington Pair.

A Darlington Pair acts as one transistor but with a current gain that equals:

Total current gain ($h_{FE \text{ total}}$) = current gain of transistor 1 ($h_{FE t1}$) x current gain of transistor 2 ($h_{FE t2}$)

So, for example, if you had two transistors with a current gain (h_{FE}) = 100:

$$(h_{FE \text{ total}}) = 100 \times 100$$

$$(h_{FE \text{ total}}) = 10,000$$

You can see that this gives a vastly increased current gain when compared to a single transistor. Therefore, this will allow a very low input current to switch a much larger load current.

Base activation voltage

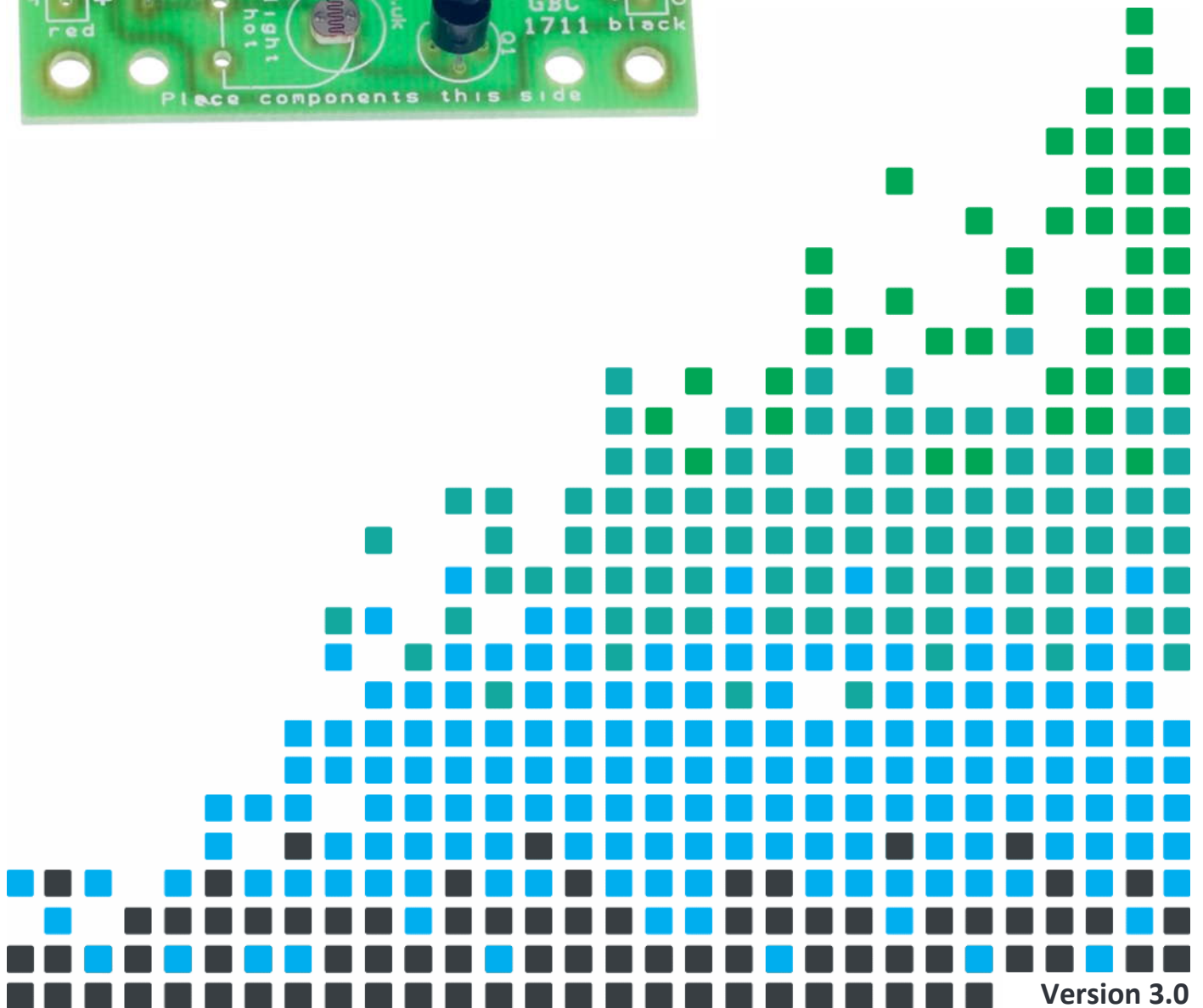
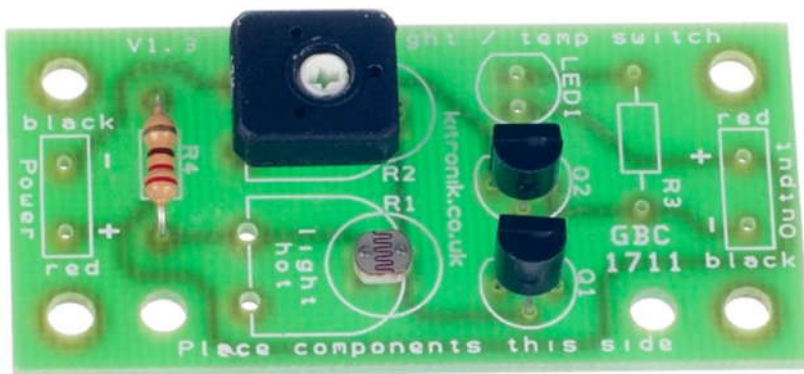
In order to turn on a transistor, the base input voltage of the transistor will (normally) need to be greater than 0.7V. As two transistors are used in a Darlington Pair, this value is doubled. Therefore, the base voltage will need to be greater than $0.7V \times 2 = 1.4V$.

It is also worth noting that the voltage drop across the collector and emitter pins of the Darlington Pair when they turn on will be around 0.9V. Therefore if the supply voltage is 5V (as above) the voltage across the load will be will be around 4.1V ($5V - 0.9V$).



CONTROL ELECTRONIC CIRCUITS WITH THE OUTPUT OF THIS

LIGHT ACTIVATED SWITCH



Build Instructions – Light Activated

Before you start, take a look at the Printed Circuit Board (PCB). The components go in the side with the writing on and the solder goes on the side with the tracks and silver pads.

1 PLACE RESISTOR

Start with the 220Ω resistor that is marked with red, red, brown coloured bands. Solder the resistor into the PCB where it is labelled R4. It doesn't matter which way around the resistor goes into the board.



2 PLACE THE TRANSISTORS

The two transistors should be placed into Q1 and Q2. It is important that they are inserted in the correct orientation. Ensure that the shape of the device matches the outline printed on the PCB. Solder the devices into place.



3 SOLDER THE PHOTODETECTOR

Solder the Photodetector into the circle indicated by the text R1. This is next to the 'light' text. For the phototransistor make sure the flat edge is towards the Power connections end of the PCB. It does not matter which way around the LDR is inserted



Phototransistor

LDR

4 SOLDER THE VARIABLE RESISTOR

Place the variable resistor into R2. It will only fit in the holes in the board when it is the correct way around.



Connecting power

There are two power terminals on the PCB to allow power to be connected. These are identified by the text 'power' on the PCB.

- The positive power connection should be connected to the terminal indicated by the text '+' and 'red'.
- The negative power connection should be connected to the terminal indicated by the text '-' and 'black'.

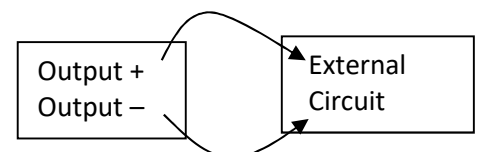
Connecting an LED

The circuit can be used to turn on an LED. The LED should be soldered into the LED1 on the PCB. A current limit resistor must also be placed in the R3 on the PCB. The value of R3 will depend on the LED used and the supply voltage. For a standard LED and a 5V supply voltage a 220Ω would be suitable.

Connecting an external circuit to the boards output

The circuit can be used to control another device. To do this the device that is to be controlled should be connected to the terminals labelled 'output'. When the circuit is activated the output turns on and can be used to turn on the device to which it is connected.

Note: This output will be around 0.9V lower than that connected to the PCB.



Build Instructions – Dark Activated

Before you start, take a look at the Printed Circuit Board (PCB). The components go in the side with the writing on and the solder goes on the side with the tracks and silver pads.

1 PLACE RESISTOR

Start with the 220Ω resistor that is marked with red, red, brown coloured bands. Solder the resistor into the PCB where it is labelled R4. It doesn't matter which way around the resistor goes into the board.



2 PLACE THE TRANSISTORS

The two transistors should be placed into Q1 and Q2. It is important that they are inserted in the correct orientation. Ensure that the shape of the device matches the outline printed on the PCB. Once you are happy, solder the devices into place.



3 SOLDER THE VARIABLE RESISTOR

Place the variable resistor into R1. It will only fit in the holes in the board when it is the correct way around.



4 SOLDER THE PHOTODETECTOR

Solder the Photodetector into the circle indicated by the text R2. This is next to the 'dark' text. For the phototransistor make sure the flat edge is towards the Output connections end of the PCB. If you have an LDR it does not matter which way around it is inserted.



Phototransistor LDR

Connecting power

There are two power terminals on the PCB to allow power to be connected. These are identified by the text 'power' on the PCB.

- The positive power connection should be connected to the terminal indicated by the text '+' and 'red'.
- The negative power connection should be connected to the terminal indicated by the text '-' and 'black'.

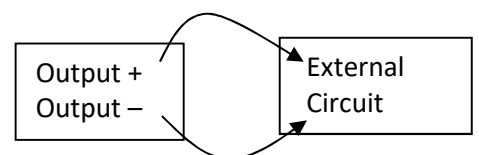
Connecting an LED

The circuit can be used to turn on an LED. The LED should be soldered into the LED1 on the PCB. A current limit resistor must also be placed in the R3 on the PCB. The value of R3 will depend on the LED used and the supply voltage. For a standard LED and a 5V supply voltage a 220Ω would be suitable.

Connecting an external circuit to the boards output

The circuit can be used to control another device. To do this the device that is to be controlled should be connected to the terminals labelled 'output'. When the circuit is activated the output turns on and can be used to turn on the device to which it is connected.

Note: This output will be around 0.9V lower than that connected to the PCB.



Checking Your Circuit

Check the following before you connect power to the board:

Check the bottom of the board to ensure that:

- All these leads are soldered.
- Pins next to each other are not soldered together.

Check the top of the board to ensure that:

- The body of the two transistors match the outline on the PCB.

Testing the PCB

Light activated circuit

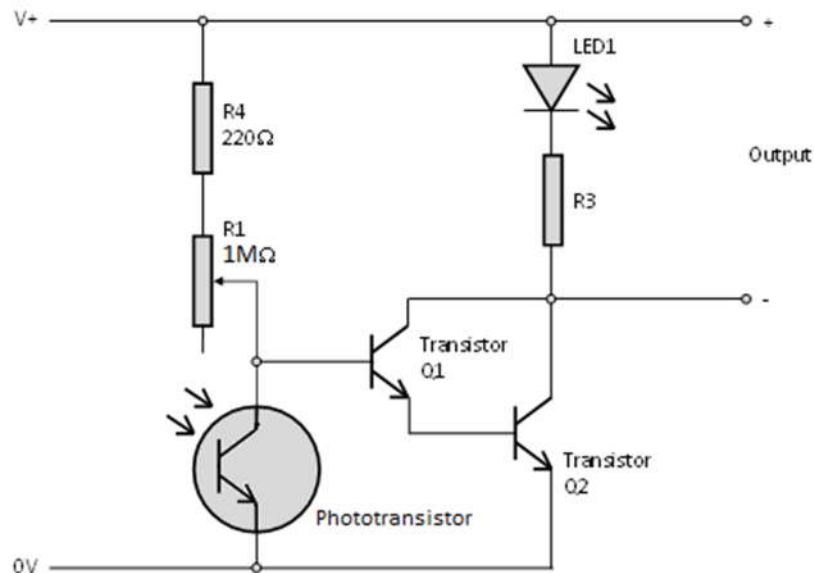
- In daylight, turn the variable resistor R2 fully clockwise (high resistance = $1M\Omega$). At this point the output should be on (and the LED if fitted).
- Now turn the variable resistor R2 anti-clockwise until the output turns off (and the LED if fitted).
- Turn the variable resistor R2 back clockwise. Note the point at which the output (and the LED if fitted) turns back on. This is the trip point for the current light level.
- If you want the circuit to trip at a lower light level then adjust R2 forward in the clockwise direction.
- If you want the circuit to trip at a brighter light level then adjust R2 back in the anti-clockwise direction.
- Some experimentation may be required to set the correct trip point.

Dark activated circuit

- In daylight turn the variable resistor R1 fully clockwise (high resistance = $1M\Omega$). At this point the output should be off (and the LED if fitted).
- Now turn the variable resistor R1 anti-clockwise until the output turns on (and the LED if fitted).
- Turn the variable resistor R1 back clockwise. Note the point at which the output (and the LED if fitted) turns back off. This is the trip point for the current light level.
- If you want the circuit to trip at a lower light level then adjust R1 forward in the clockwise direction.
- If you want the circuit to trip at a brighter light level then adjust R1 back in the anti-clockwise direction.
- Some experimentation may be required to set the correct trip point.



How the Light Switch Works – Dark Activated



The circuit operation is very simple. When the input to the transistor Q1, which is fed from the connecting point of R1 and Phototransistor, is greater than 1.4V, the output is turned on. Normally it requires 0.7V to turn on a transistor but this circuit uses two transistors in a Darlington Pair, meaning that it requires $2 \times 0.7V = 1.4V$ to turn on both transistors.

When the phototransistor detects a brighter light level, current begins to flow through the component down to ground, thus pulling the voltage down at the transistor and turning it off.

When the phototransistor detects a darker light level, the phototransistor conducts less, so that the voltage at Q1 is pulled towards the supply voltage by the resistor R1 and R4. When this voltage is at 1.4V or higher transistor Q1 turns on.

R4 is present to protect the transistor Q1 should the variable resistor be set to zero.

It is also worth noting that the output, when turned on, will be around 0.9V lower than the supply voltage V+. This is because of the voltage drop across the collector and emitter pins of the Darlington Pair of transistors. Therefore if the supply voltage is 5V, then the output voltage will be around 4.1V.

Adjusting the trigger level

The point at which the circuit is triggered is set by the 1MΩ variable resistor. By varying the value of this resistor, the ratio of current flow of R1 and the phototransistor can be varied to a point where a centre voltage (trip point) of 1.4V is achieved at the desired light level.

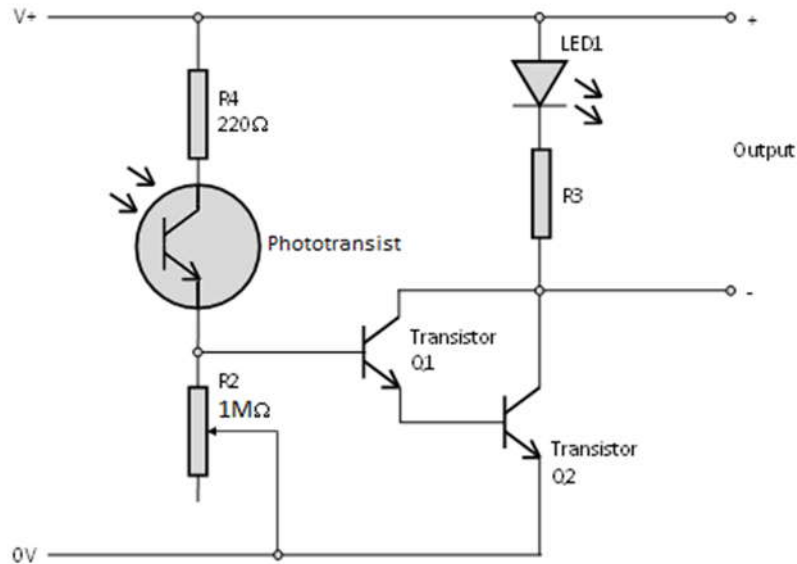
LED (if fitted)

If LED1 and R3 are fitted the LED will light at this point. The value of R3 should be selected for the relevant supply voltage on LED used. A standard LED would require around 10mA (0.01A) producing a normal brightness. As stated, a 5V supply would give 4.1V across LED1 and R3. The LED1 would use 1.9V, leaving around 2.2V (4.1V-1.9V) across R3.

$$\text{Using } R = V/I \quad R3 = 2.2 / 0.01 \quad R3 = 220\Omega$$



How the Light Switch Works – Light Activated



The circuit operation is very simple. When the input to the transistor Q1, which is fed from the connecting point of the Phototransistor and R2, is greater than 1.4V, the output is turned on. Normally it requires 0.7V to turn on a transistor but this circuit uses two transistors in a Darlington Pair, meaning that it requires $2 \times 0.7V = 1.4V$ to turn on both transistors.

The voltage at the join of the phototransistor and R2 is determined by the amount of light/darkness the phototransistor can detect.

The variable resistor is set so that when the phototransistor is in darkness, it pulls the voltage down to ground and turns off the transistor. When the phototransistor is illuminated it conducts, allowing more current to flow and the voltage at the base of the transistor Q1 rises above 1.4V.

R4 is only present to protect the transistor in the dark activated version (when the variable resistor is set to zero).

It is also worth noting that the output, when turned on, will be around 0.9V lower than the supply voltage V+. This is because of the voltage drop across the collector and emitter pins of the Darlington Pair of transistors. Therefore if the supply voltage is 5V, then the output voltage will be around 4.1V.

Adjusting the trigger level

The point at which the circuit is triggered is set by the 1MΩ variable resistor. By varying the value of this resistor, the ratio of current flow of R1 and the phototransistor can be varied to a point where a centre voltage (trip point) of 1.4V is achieved at the desired light level.

LED (if fitted)

If LED1 and R3 are fitted, the LED will light at this point. The value of R3 should be selected for the relevant supply voltage on LED used. A standard LED would require around 10mA (0.01A) producing a normal brightness. As stated, a 5V supply would give 4.1V across LED1 and R3. The LED1 would use 1.9V, leaving around 2.2V (4.1V-1.9V) across R3.

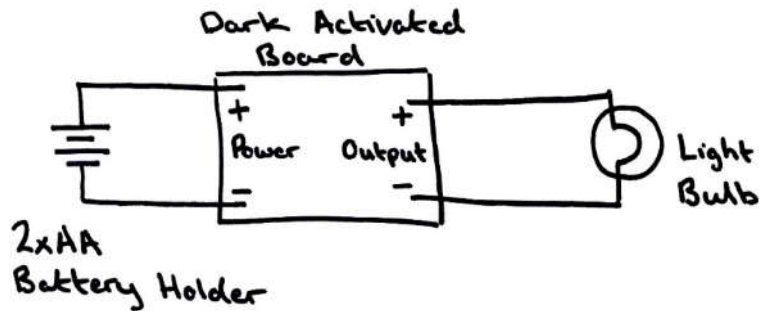
$$\text{Using } R = V/I \quad R3 = 2.2 / 0.01 \quad R3 = 220\Omega$$



Applications

Garden lamp that switches on automatically at night

As shown to the right, by simply adding a battery holder and light bulb to a PCB built in the 'dark activated' configuration, you can create a garden light that automatically comes on in the dark.

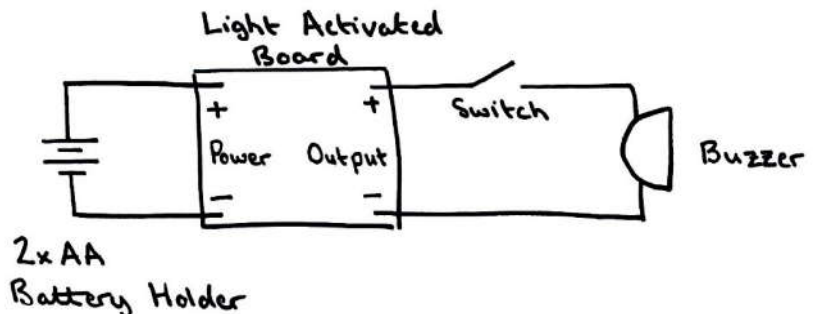


Parts list to build 100 garden lights:

Part no.	Description	Qty
2112	Light Activated Switch	100
2232-25	2 x AA Battery Cage with Leads, pack of 25	4
3517	MES Lamp Holder (Economy), pack of 50	2
3519	MES Lamp 2.5V, pack of 50	2
2201-40	Zinc Chloride AA Batteries, box of 40	5

Drawer alarm, which sounds when a dark draw is opened

As shown to the right, by simply adding a battery holder, switch and buzzer to a PCB built in the 'light activated' configuration, you can create an alarm that sounds when a dark draw is opened and the PCB is exposed to light. The switch is to allow the alarm to be activated or deactivated.



Parts list to build 100 draw alarms:

Part no.	Description	Qty
2112	Light Activated Switch	100
2232-25	2 x AA Battery Cage with Leads, pack of 25	4
3404	Miniature DPDT Slide Switch, pack of 10	10
3301	Piezo Buzzer (with Drive), pack of 10	10
2201-40	Zinc Chloride AA Batteries, box of 40	5



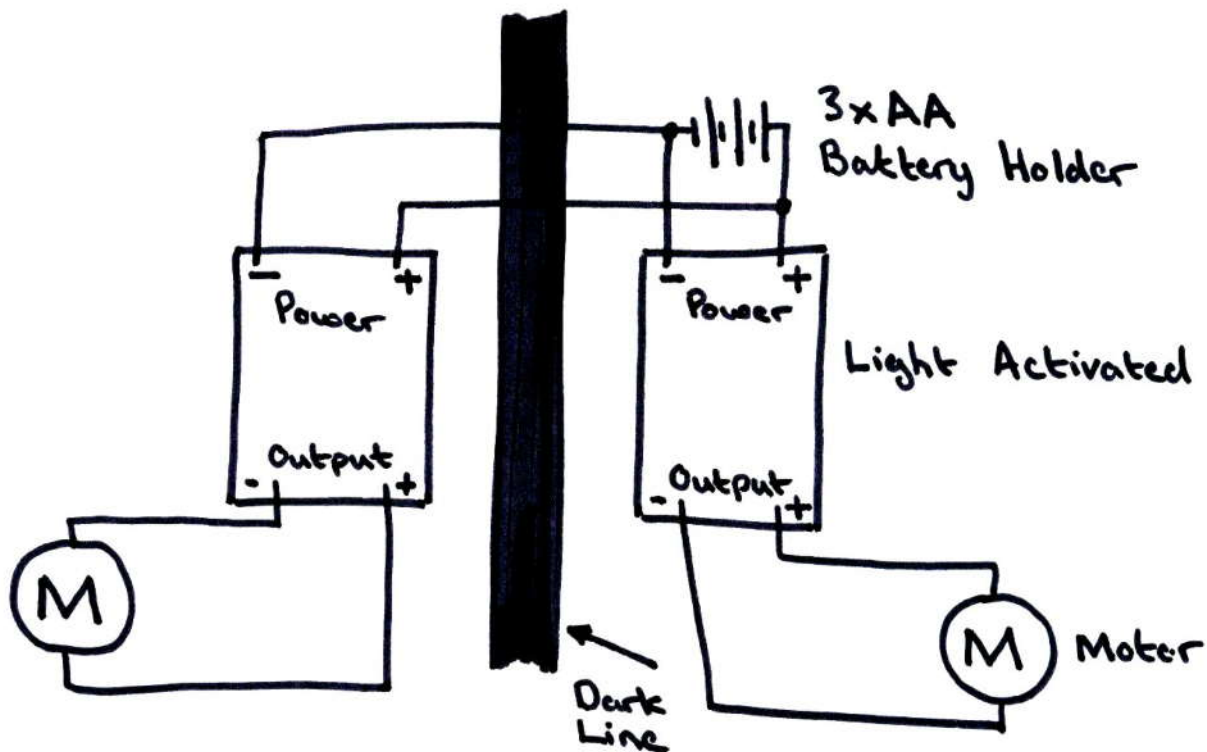
Light Activated Switch Essentials

www.kitronik.co.uk/2112



Line following buggy (using 2 light activated boards)

As shown below, by using two light activated boards and two motors, it is possible to make a line following buggy. The boards just need to be mounted close to the ground with the light sensor facing down. Normally the buggy will travel in a straight line. If one of the sensors cross the dark line, it turns off the motor on that side. This will steer the buggy away from the line. Once it has been steered away from the line, the motor will turn back on. This circuit could be used with Lego motors.



Parts list to build 100 buggies:

Part no.	Description	Qty
2112	Light Activated Switch	200
2234-25	3 x AA Battery Cage with Clip, pack of 25	4
2238-25	PP3 Battery Clip Lead, pack of 25	4
2501	Motor (Medium Torque), pack of 10	20
2505	Plastic Motor Mounting Clips, pack of 10	20
2201-40	Zinc Chloride AA Batteries, box of 40	8

Note: No gear box parts included.



Online Information

Two sets of information can be downloaded from the product page where the kit can also be reordered from. The 'Essential Information' contains all of the information that you need to get started with the kit and the 'Teaching Resources' contains more information on soldering, components used in the kit, educational schemes of work and so on and also includes the essentials. Download from:

www.kitronik.co.uk/2112



This kit is designed and manufactured in the UK by Kitronik

Telephone: +44 (0) 845 8380781

Sales email: sales@kitronik.co.uk

Tech support email: support@kitronik.co.uk

Web: www.kitronik.co.uk



www.kitronik.co.uk/twitter



www.kitronik.co.uk/facebook



www.kitronik.co.uk/youtube



www.kitronik.co.uk/google

Every effort has been made to ensure that these notes are correct, however Kitronik accept no responsibility for issues arising from errors / omissions in the notes.

© Kitronik Ltd - Any unauthorised copying / duplication of this booklet or part thereof for purposes except for use with Kitronik project kits is not allowed without Kitronik's prior consent.

