

Technical Data

Pin(outer sleeve): Brass, machined
CuZn38Pb2

Insulator: PPS UL94V-0 colour: black

Current rating: 3Amps

Mechanical life: min 500cycles

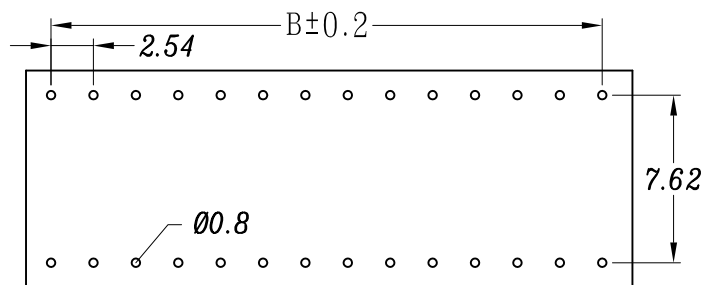
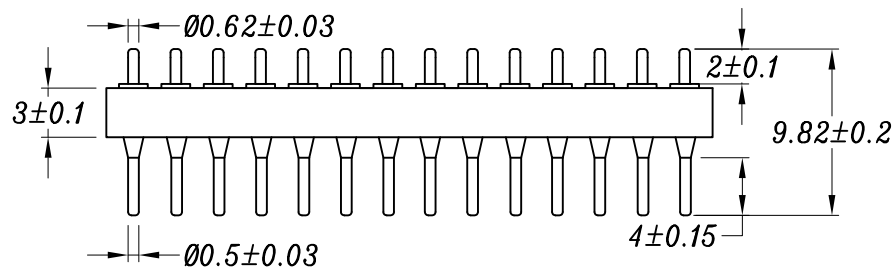
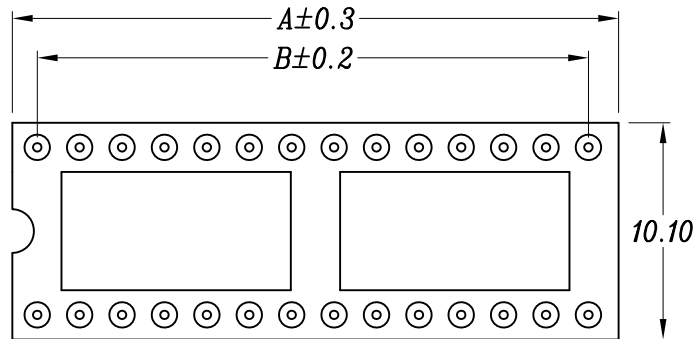
Contact resistance: max 10m

Dielectric strength: min 1000V RMS

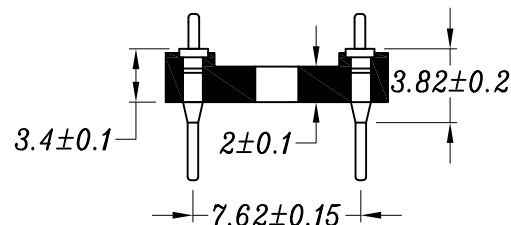
Operating temperature: -40°C
to +105°C

Soldering temperature: +255°C

PIN: 4, 6, 8, 10, 12, 14, 16, 18, 20, 24, 28, 32



Recommended P.C.B Layout(±0.5)



PIN	A	B
4	5.08	2.54
6	7.62	5.08
8	10.16	7.62
10	12.70	10.16
12	15.24	12.70
14	17.78	15.24
16	20.32	17.78
18	22.86	20.32
20	25.40	22.86
24	30.48	27.94
28	35.56	33.02
32	40.64	38.01



NO.410, FU-TEH 1ST ROAD,
SHIJR, TAIPEI COUNTY
221, TAIWAN, R.O.C.

TEL: 886-2-26945824

FAX: 886-2-26946971

TITLE

2.54X7.62圓孔排針
H2.0 L=9.82

PARTS NO.

2227P-XXG-03-L2

DWG, NO.

GENERAL
TOLERANCE

DIM:
XX. ±3.00
X. ±1.00
X.X ±0.50

DRAWN

CHECK

APPROVE

SCALE

DATE

DATE

DATE

UNIT

MM REV. D