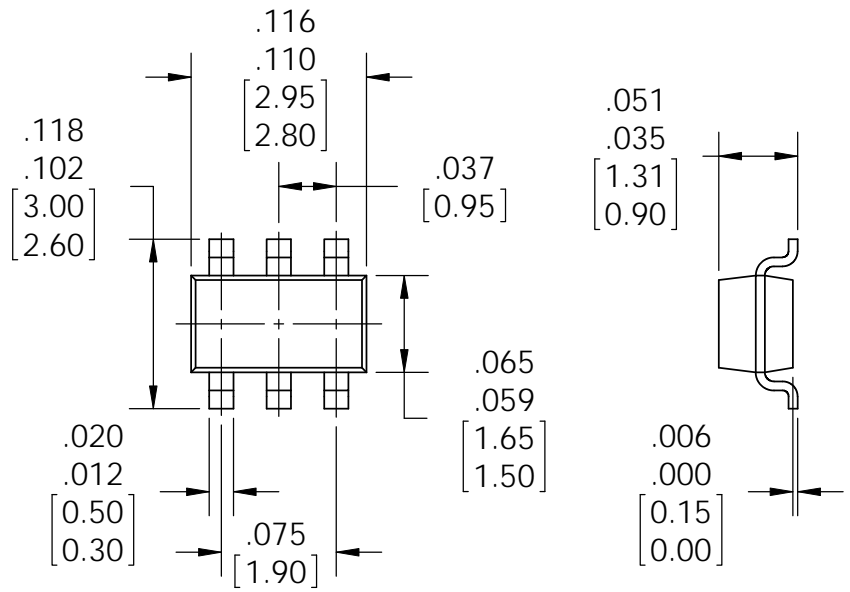
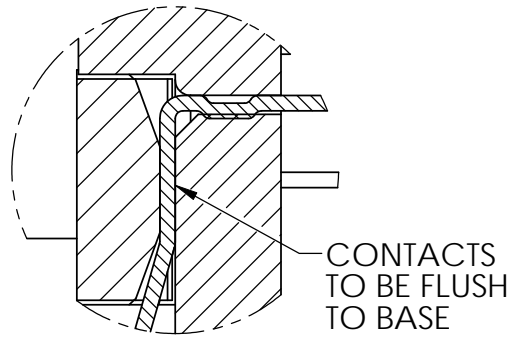
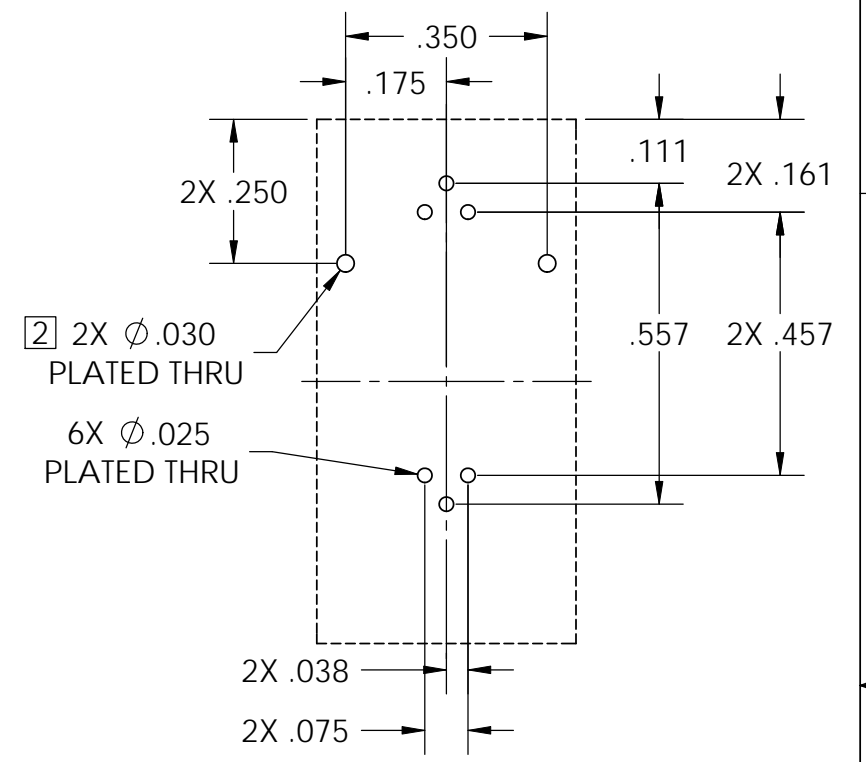
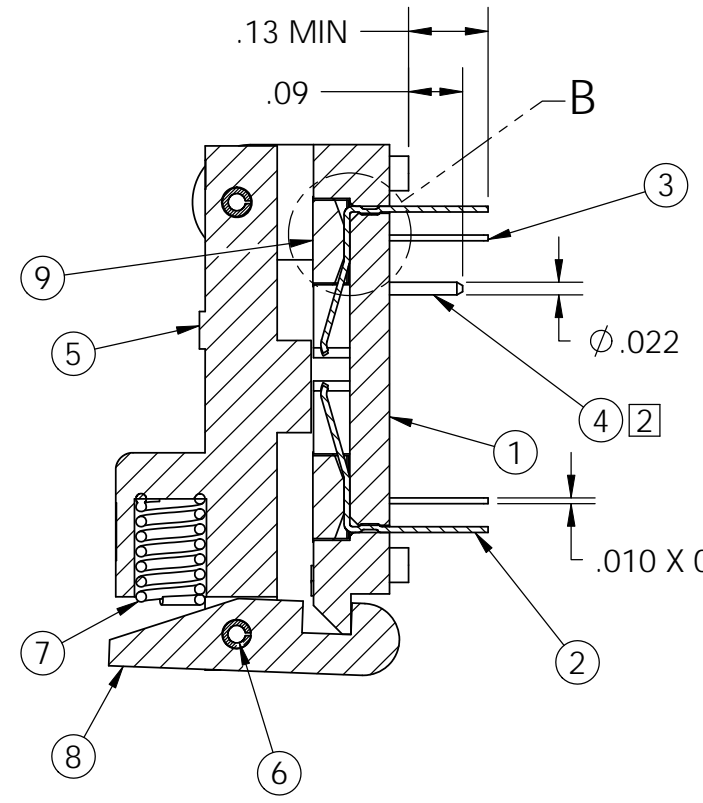
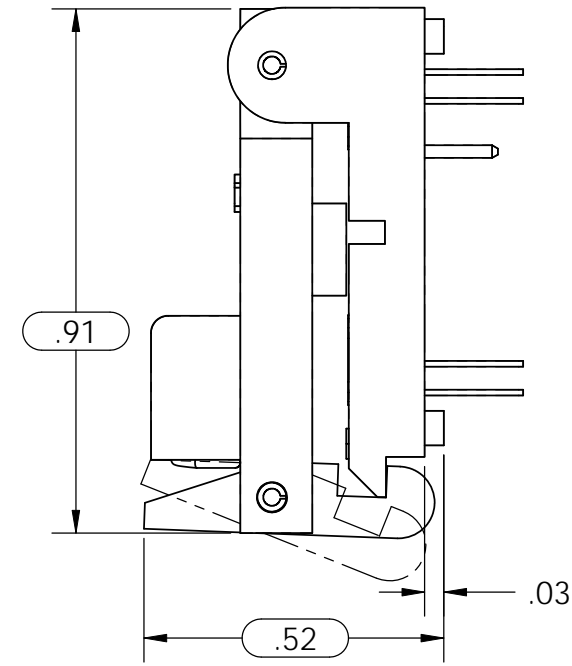
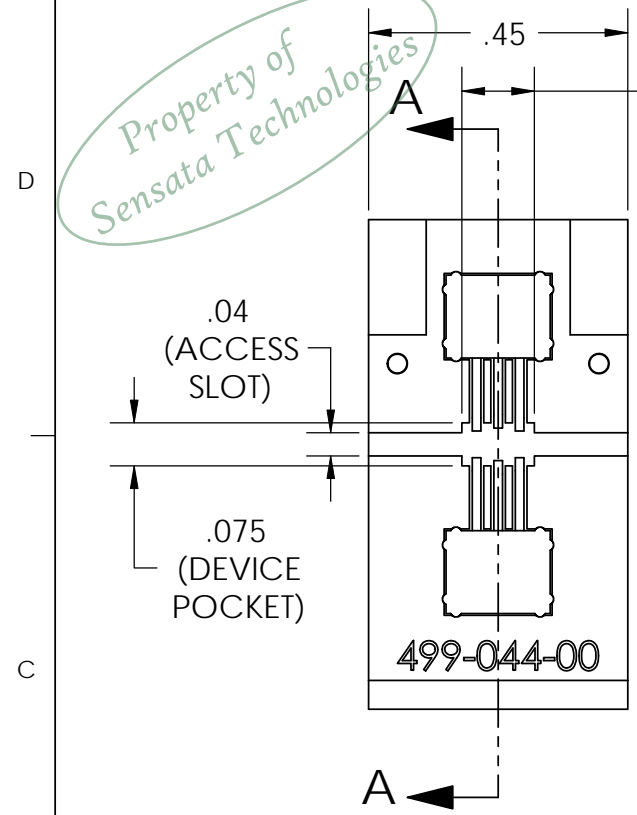


Property of  
Sensata Technologies

REVISIONS				
REV	ECN	DESCRIPTION	DATE	BY
A1	09-0006	ADDED DETAIL "B", .13 MIN WAS .14	1/5/2009	DLC
A2	10-0474	ADDED RECOMMENDED PACKAGE DETAILS, ADDED HOLE SIZE TO FOOTPRINT, 2602004 WAS 005-017-00, 2800619 WAS 099-060-01, MOVED DEVICE POCKET & ACCESS SLOT DIMENSIONS	9/27/2010	DLC
B	11-0584	2801916 WAS 2602004, ADDED 3147002	11/18/2011	DLC



ITEM NO.	QTY.	PART NUMBER	DESCRIPTION
9	2	3147002	INSERT, CONTACT ALIGNMENT (499-P43 & P44)
8	1	001-338-00	LATCH, "D-PAK"
7	1	2801916	SPRING, COMP., .120IN. O.D., .313IN. LEN.
6	2	2800619	ROLL PIN, .04688IN DIA., .438IN. LEN.,
5	1	001-337-23	LID
4	2	003-031-01	CONTACT PIN
3	4	002-053-02	CONTACT
2	2	002-068-12	CONTACT
1	1	001-336-60	SOCKET BODY SOT-23 6 LEAD

[2] HOLES FOR HOLD DOWN PINS. PINS SHALL BE SOLDERED TO BIB.  
 [1] MATERIAL AND FINISH  
 BODY, LID, LATCH-PPS, AS MOLDED  
 CONTACTS - PFINODAL, Au PLATED  
 NOTES, UNLESS OTHERWISE SPECIFIED:

RECOMMENDED PACKAGE REFERENCE JEDEC SPEC MO-178

LEGEND		INTERPRET DRAWING IN ACCORDANCE WITH ASME Y14.5M-1994	MATERIAL [1]	
CRITICAL			FINISH [1]	
02 TOTAL NO. OF USED		TOLERANCES X.XX ± 0.01 X.XXX ± 0.003 X.XXXX ± 0.0005 ANGLE ± 1°	REFERENCE	TITLE SOCKET ASSEMBLY (SOT-23) 6 LEAD W/ SOLDER PINS
PROJECTION			PROJECT / SERIES	DRAWN DS 2/10/2006 CHECKED GR 2/10/2006 ENGINEER DS 2/10/2006
SIZE B		CONFIDENTIAL/PROPRIETARY THIS DOCUMENT CONTAINS PROPRIETARY INFORMATION OF WELLS-CTI. NOT TO BE USED, COPIED OR DISCLOSED WITHOUT PERMISSION. ALL RIGHTS RESERVED.	QUALITY	SCALE 3:1
			MFG. ENGR.	DATE