

## インレット(AC INLET)

定格: 2.5A 250V

AC-M01 (UL 2.5A 250V/7A 125V)

絶縁抵抗: DC500V に於いて 100MΩ 以上のこと

耐電圧: AC2000V に於いて1分間異常がないこと

Rating: 2.5A 250V

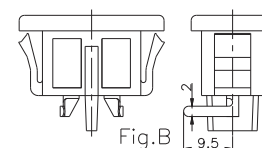
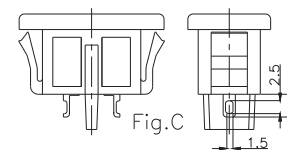
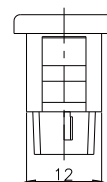
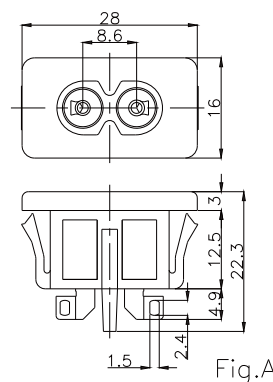
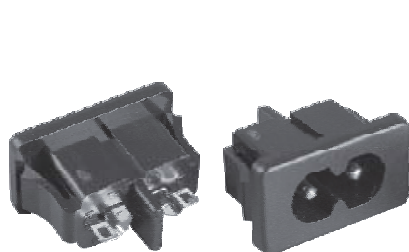
AC-M01 (UL 2.5A 250V/7A 125V)

Insulation Resistance: Over 100MΩ at 500V DC

Dielectric withstanding voltage: 1minute at 2000V AC

### M-Series

AC-M01SB02



Part No.	Terminal
AC-M01SB02	Fig.A
AC-M01PB17	Fig.B
AC-M01SB01	Fig.C

取付穴参考図  
Size of mounting hole

