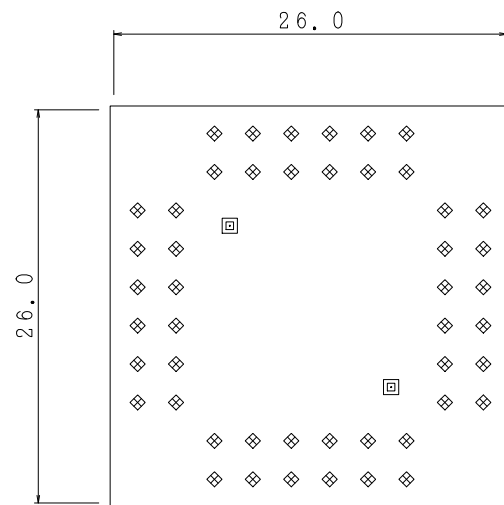
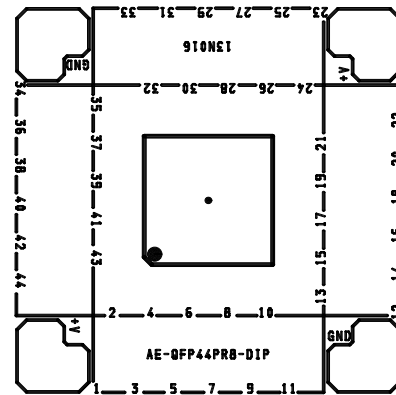


AE-QFP44PR8-DIP 穴明加工図

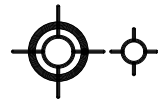
穴記号	Tコード	穴径 (mm)	長さ (mm)	穴種別	個数
回	3	0.8000	-	スルー	2
◇	5	1.0000	-	スルー	48
					50

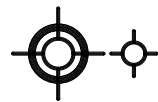
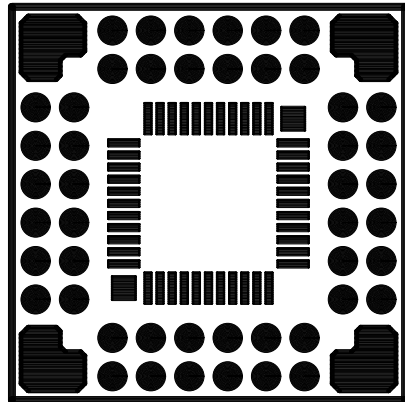




AE-QFP44PR8-DIP

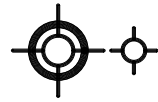
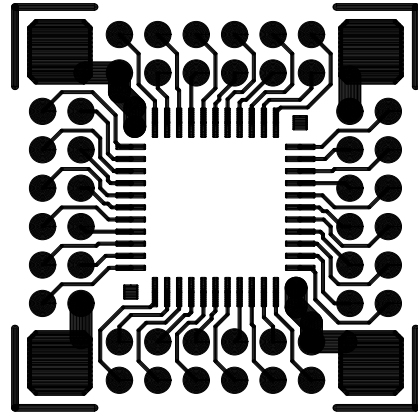
部品面シルク





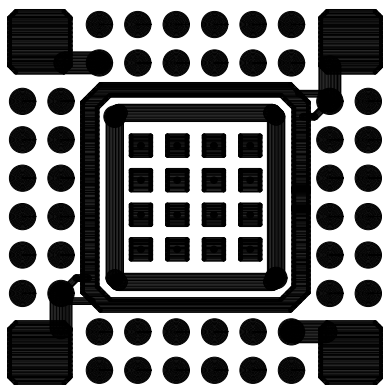
AE-QFP44PR8-DIP

部品面レジスト

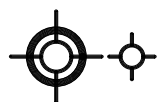


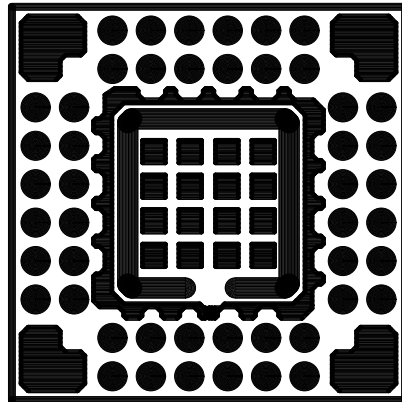
AE-QFP44PR8-DIP

部品面

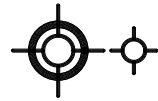


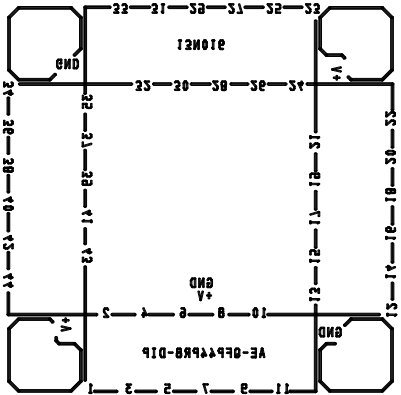
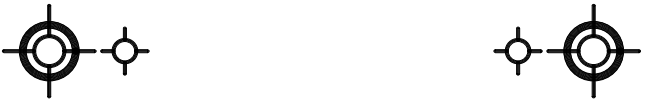
AE-QFP49R8-DIP
面田半





AE-QFP49R8-DIP
半田面飞入





AE-05P49R8-DIP
半田面入心

