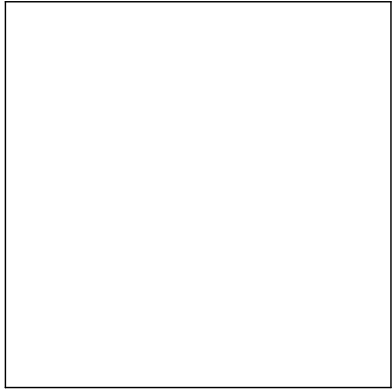
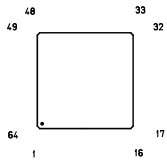
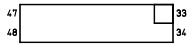


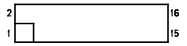
穴加工図

form	diameter	number	
a	0.300	64	メッキ有
b	0.500	64	メッキ有
c	0.900	64	メッキ有

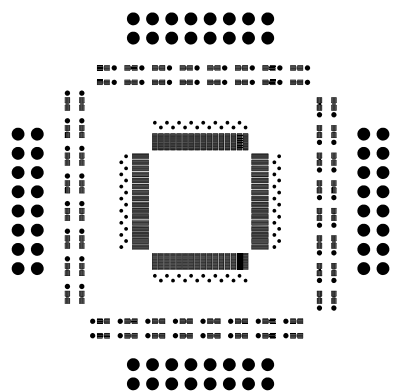




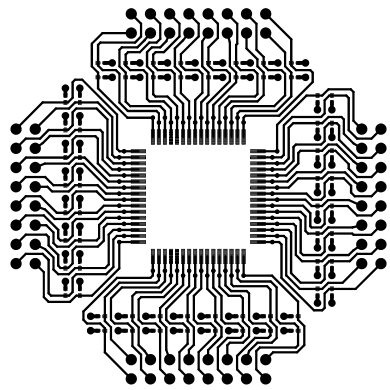
AE-QFP64PR8-CR



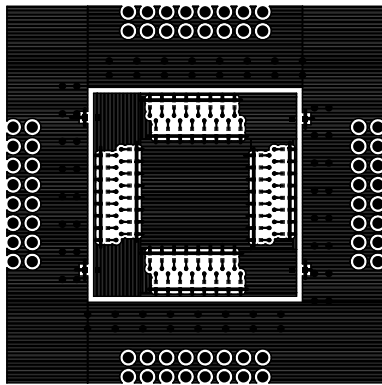
部品面シルク



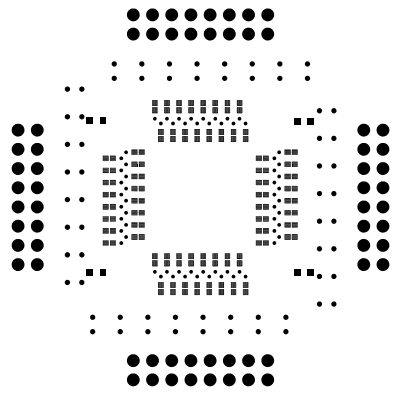
部品面リスト



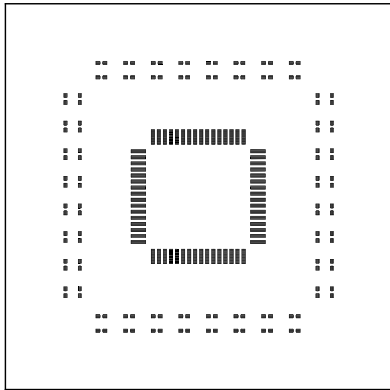
TOP (部品面パターン)



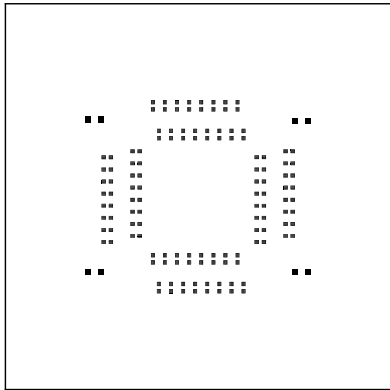
BOT (半田面パターン)



半田面レスト



部品面メタル



半田面メタル