

1. Scope 適用範囲

This specification applies to Blowers (model No. C7-5020L-07 ) which are to be delivered to

Messrs. Akizuki Denshi Tsusho Co.,Ltd

本仕様書は、東芝ホームテクノ株式会社が 秋月電子通商 に納入するシロッコファン  
(弊社名称 C7-5020L-07 )について規定する。

2. Motor type and model No. 型式, 名称

Motor type: DC brushless motor

型式

Model number: C7-5020L-07

名称 (Our Part No. P08009070A )

3. Ratings 定格

Rated voltage: DC12V

電圧

Electric current: 0.21A

電流

Rated speed: 6400 r/min

回転数

Operating voltage range: DC 10V to DC 13.5V

使用電圧範囲

Power consumption: 2.9W (Typ)、3.3W(Max)

消費電力

Rating time: Continuous

定格時間

連続

Ranges of operation temperature and humidity:

-10°C to 60°C

25% to 85% RH (Free from dew condensation and freezing.)

使用温湿度範囲

-10° C ~ 60° C

25% ~ 85% RH (結露・氷結のないこと)

Ranges of storage temperature & humidity:

-20°C to 70°C (less than six months)

8% to 90% RH (Free from dew condensation and freezing.)

保存温湿度範囲

-20° C ~ 70° C (6カ月以内)

8% ~ 90% RH (結露・氷結のないこと)

4. Construction 構造

Outside dimensions:  
外形寸法

As specified in the drawing attached.  
別紙図面に

Directions of airflow and rotation:  
風向、回転方向

As specified in the drawing attached.  
別紙図面による

Weight:  
製品重量

Approx 27 grams  
約27g

Fan Assy Weight:  
ファン組立重量

Approx 7 grams  
約7g

Insulation class:  
絶縁階級

Complies with the UL insulation class A.  
UL A種に準拠

Bearing type:  
軸受

Sleeve Bearing  
焼結軸受

Production place:  
生産場所

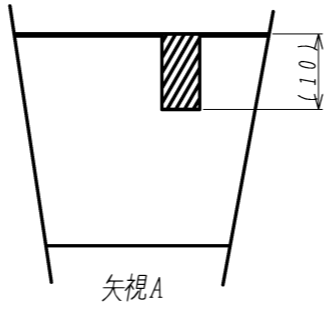
HANGZHOU TOSHIBA HOME TECHNOLOGY ELECTRONICS CO., LTD.  
杭州東芝家電技術電子有限公司(中国)

5. Performance 性能  
(2) Characteristics 特性 (Test conditions: 12V DC, PWM input frequency 30 kHz and PWM duty 100%)  
(試験条件: DC12V PWM入力周波数 30kHz PWM Duty 100%)

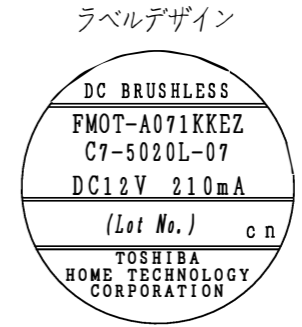
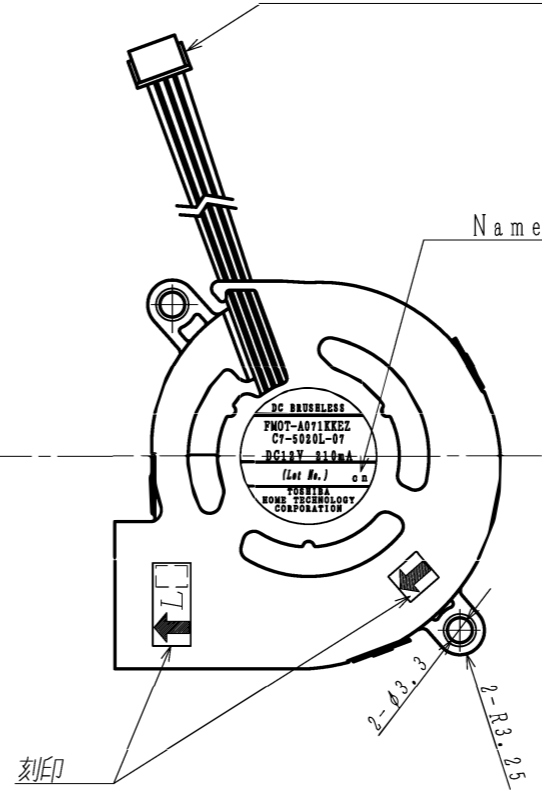
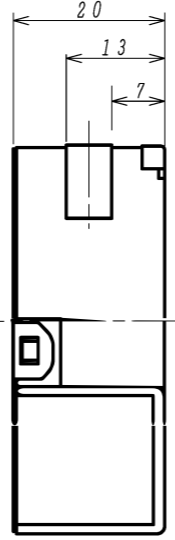
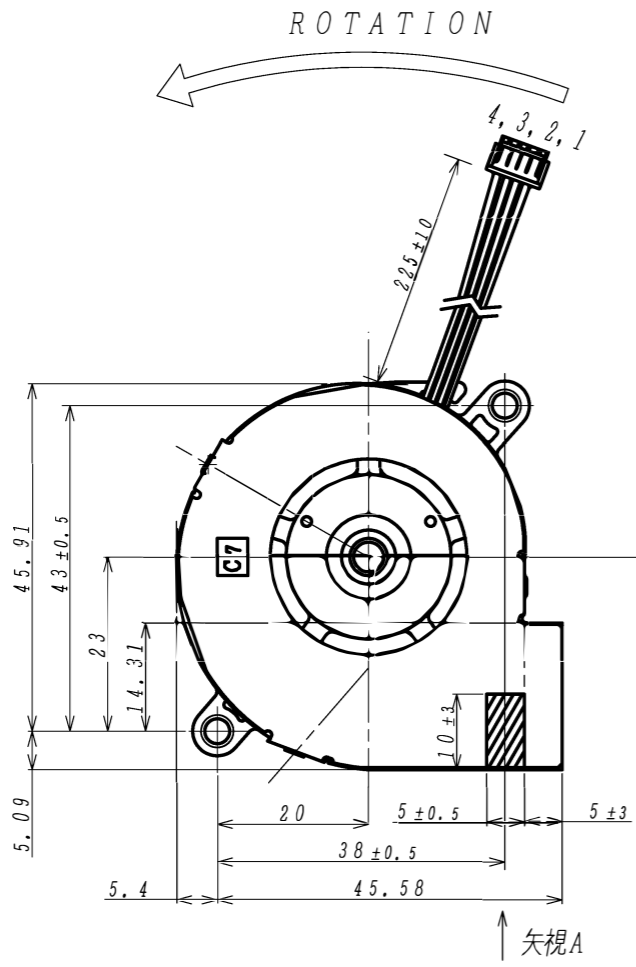
Item	Testing condition	Criteria
5-1 Input current 入力電流	Measurement is taken in 30 minute. 30分後	272 mA or less 272 mA以下
5-2 Number of revolutions 回転数	Measurement is taken in 30 minute. 30分後	6400±600 r/min. The value specified above is the one at the shipment from us. The number of revolutions can be varied depending on the operating conditions such as ambient temperature, etc. 6400±600 r/min 回転数規格値は当社出荷時のものであり雰囲気温度、回転履歴によって変動しますのでご注意ください
5-3 Starting voltage 起動Duty	Duty that is measured when the blower starts operating with the PWM signal applied from duty 0%. (at DC 10V) PWM信号をDuty0%から印加し回転し始めるDuty	Duty 20% or less ※Startup input more than 20% Duty 20% 以下 ※起動時は 20% 以上入力のこと
5-4 Locked rotor current 拘束電流	The initial value of the current is measured when the fan of the blower is locked forcibly with the rated voltage applied. 定格電圧を印加し、ファンモータの回転を強制的に拘束させた状態で初期値の電流を測定する	700 mA or less 700 mA以下
5-5 Air flow characteristics 風量特性	Air flow is measured by the exhaust method in an air chamber (double chamber) as specified in JIS B 8330. less at 6400 r/min JIS B8330 に規定する空気槽(ダブルチャンバー)により吐出法にて測定 6400 r/min 時	Air flow 0.17 m <sup>3</sup> /min. or more. (Typical value: 0.19 m <sup>3</sup> /min.) Static pressure: 180 Pa or more. (Typical value: 200 Pa) 最大風量: 0.17 m <sup>3</sup> /min.以上 (標準値 0.19 m <sup>3</sup> /min.) 最大静圧: 180 Pa以上 (標準値 200 Pa)
5-6 Acoustic noise 騒音	Acoustic noise of the blower is measured as shown in 5-(1)-1). The number of revolutions: 6400 r/min 5- (1) -1)に示す測定 回転数 6400 r/min 時	43.0 dB or less 43.0 dB以下
5-7 Temperature rise 温度上昇	The blower is operated with the rated voltage applied until the temperature of each part gets stable. Then temperature rise at the winding coils is measured by the thermocouple method. 定格で各部温度が一定になるまで運転し、コイル部の温度上昇を熱電対法、にて測定する	55°C degrees or less at the winding coils (in 60°C atmosphere) コイル 55°C 以下 ( 60°C 雰囲気)
5-8 Dielectric strength 絶縁耐圧	Between the frame and all of the three lead wires, モータの電線±リード線とフレーム間	AC 500-volt application for 1 min or AC 600-volt application for 1 sec (Check current: 2mA ) AC 500V 1分間 又は AC 600V 1秒間 (検知電流 2mA )

Rev. No.	Revised part	Date	Remarks	Made by	Checked by

図面区分
納入仕様書
SPECIFICATION FOR APPROVAL
2023-9-28



Housing : A1257H00-4P-HF ナチュラル (JWT)  
Terminal : A1257H-TOP2 (JWT)

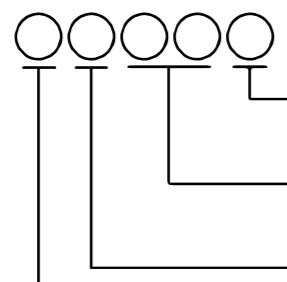


注記

1. 銘板は上図に示す位置に確実に貼り付けること。
2. Lot No. は、上図に示す位置に明確に捺印すること。

Notes

1. Label stamping model number is C7-5020L-07
2. Manufacturing lot stamping method.



変更表示  
Alteration  
製造日 (01, 02, 03, .....31)  
Manufactured day (01, 02, 03, .....31)  
製造月 (1, 2, 3, .....9, X, Y, Z)  
Manufactured month (1, 2, 3, .....9, X, Y, Z)  
西暦末尾  
Last number of year

a Lead (UL1571)	function(機能)	PIN NO.
AWG28 Orange	PWM-IN	1PIN
AWG28 BLACK	GND	2PIN
AWG28 GRAY	Signal (FG)	3PIN
AWG28 BLUE	Vcc (DC12V)	4PIN

Product Name		Model No.		Drawing No.	
DC BRUSHLESS FAN MOTOR		C7-5020L-07		P08009070A	
Drawn by	Designed by	Checked by	Approved by	Unit	Scale
黒田	黒田	杉野	杉野	mm	1:1
'23.9.28	'23.9.28	'23.9.28	'23.9.28	Prat name	
				TOSHIBA HOME TECHNOLOGY CORPORATION	

配布先