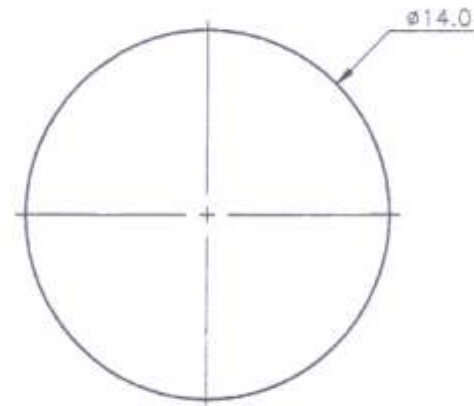


**RECOMMENDED PANEL CUTOUT**



**SPECIFICATION :**

1. CURRENT CARRYING CAPACITY
  - 1) AC : 100V 1A MAX.
  - 2) DC : 12V 2A MAX.
2. CONTACT RESISTANCE : 30m OHM MAX.
3. INSULATION RESISTANCE : 50M OHM MIN. AT DC 250V.
4. VOLTAGE WITHSTAND : AC 250V FOR ONE MINUTE.
5. INSERTION FORCE : 1.0 - 4.5 KG  
WITHDRAWAL FORCE : 0.8 - 3.0 KG

ARRANGEMENT OF CONTACTS							3. CONTACTOR	3-8	PBR 0.2 t	SILVER PLATED		
							2. EARTH TERMINAL	1	BRASS 0.4 t	TIN		
NO. OF CONTACTS	3	4	5	6	7	8	1. BODY	1	P.B.T.		UL94V-0	
MODEL NO.					not available		P/N	PART NAME	Q'TY	MATERIAL	PLATING	REMARKS
HOLE LAYOUT							VERSION	APPROVAL BY	CHECKED BY	DRAWN BY	UNITS	
							A1			ling	98.12.28	
							REVISION	PROJECTION	PRODUCT	DRAWING NO.	SCALE	
									3-8PIN MINI DIN SOCKET, SCREW TYPE	DI-6795	5/1	