

GPS Walker User Manual



Version 1.6

May. 2010

Table of Content

SAFETY AND WARNINGS	1
INTRODUCTION OF THE GPS DATA LOGGER	2
FEATURES.....	2
SYSTEM SUPPORT.....	2
KEYS AND PORTS.....	3
SCREEN DISPLAY.....	3
TRANSFERRING DATA TO YOUR GPS DATA LOGGER.....	4
REMOVING THE GPS DATA LOGGER FROM YOUR COMPUTER.....	4
LISTENING TO WMA/MP3 MUSIC FILES WITH THE GPS LOGGER.....	4
<i>Lyric Display Function</i>	4
BASIC OPERATION	5
HOLD FUNCTION.....	5
BROWSING THE MAIN MENU	5
MENU STRUCTURE.....	6
MUSIC	7
FM	7
START THE FM TUNER.....	7
USING THE FM SETTINGS MENU.....	7
TUNING INTO FM RADIO STATIONS MANUALLY.....	8
ADVANCED SETTINGS	8
TIME	8
FORMAT THE GPS DATA LOGGER BY USING THE WINDOWS FORMAT TOOL	9
GPS	9
BEFORE MARKING WAYPOINTS.....	10
MARKING WAYPOINTS MANUALLY.....	10
LOGGING GPS TRACE.....	10
GOING TO THE MARKED WAYPOINT.....	11
VIEWING YOUR TRACE ON GOOGLE MAP.....	11
DOWNLOAD POIS AND VIEWING THEM ON GOOGLE MAP.....	15
UPLOADING POIS TO GPS DATA LOGGER.....	16
CHECKING F/W VERSION.....	18
UPGRADING GPS WALKER F/W.....	18
BATTERY	19
TROUBLESHOOTING	19
GPS DATA LOGGER SPECIFICATIONS	20

Safety and Warnings

Turn the volume down before putting on the headphones. While listening to music, slowly increase the volume until you are comfortable with the sound.

Static Electricity

To avoid static electricity, do not use the player in an extremely dry environment. In an environment with electrostatic discharge, GPS Walker may get malfunction and require the user to reset the product.

USB Storage Device Data Protection

- Always insert the USB device in the correct direction. Failure to do so may result in damage to the USB device and GPS Walker.
- Do not remove the USB device whilst it is being accessed.
- Electrical interference and electrostatic discharges may cause the USB device to malfunction and suffer from damage and data loss.

Statement

- It is strongly recommended that any important data be backed up on a PC to protect against corruption, data loss or device malfunction. Please note that our company and the manufacture shall be not liable for any data loss or corruption.
- The operation of the player described in the manual may differ slightly from actual product. For better performance, it is subject to change without notice.

Introduction of the GPS Data logger

Features

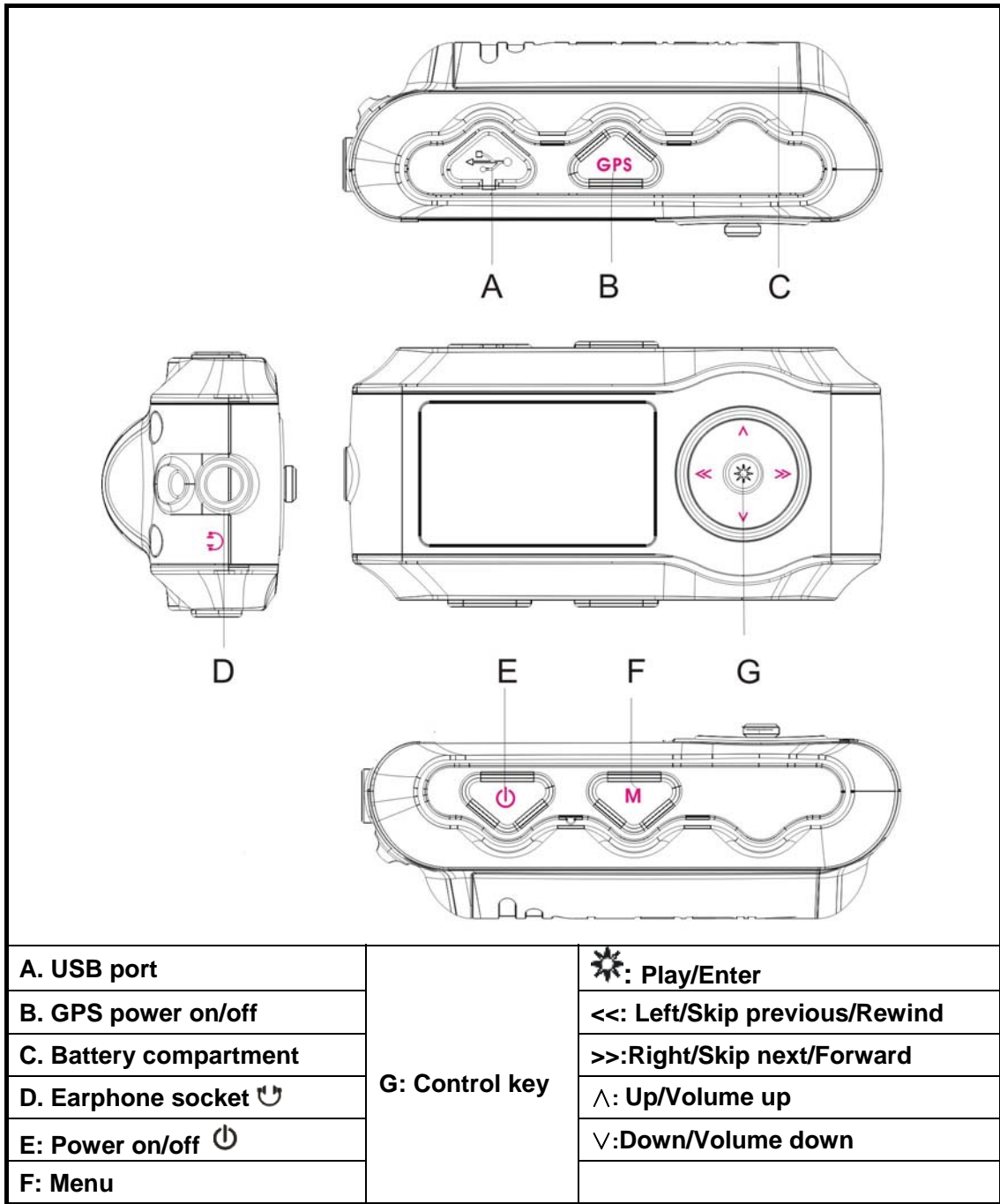
- Point to point navigation
- 2GB memory size for continuous 2,000,000 GPS data log
- Manual setting frequency and minimum speed for logging
- Embedded SiRF Star III high sensitivity low power chip
- LCD indicator GPS status
- WMA/MP3 Player
- FM tuner
- Synchronous Lyric Display with MP3 Music
- Platform: Windows 2000/XP/Vista/Win 7
- USB 2.0 supported
- 128 x 64 Dots Matrix Display
- Superb Audio Quality
- Standard 3.5Φ earphone
- One changeable AA battery

System Support

- Windows 2000/XP/Vista/Win 7, Mac OS 10.5.0 or later version

GPS Walker User Manual

Keys and Ports



Screen Display



A. Current track number / Total track number/Lyrics display	E. Equalizer
B. Play/Pause	F. GPS status
C. Elapsed time	G. Battery status
D. Repeat mode	H. Title

Transferring Data to Your GPS Data logger

1. Connect your GPS data logger to USB port by using USB cable. The data logger will show "Usb-connect" when it is connecting to a computer.
2. Right click on the folders and files you want to transfer to your GPS data logger, and select **Copy**.
3. Open the Removable Disk represented your GPS data logger, right click and select **Paste**.

Removing the GPS Data Logger from Your Computer

1. Click on the **Safely Remove Hardware** icon  in the taskbar (next to the clock).
2. Click on **Safely Remove USB Mass Storage Device**.
3. Wait until a *Safe to Remove Hardware* message is displayed.
4. Remove the GPS data logger.

Listening to WMA/MP3 music files with the GPS logger

1. Follow the instructions to copy WMA/MP3 music files to the player.
2. Connect the supplied earphone to the earphone socket.
3. Press and hold the **Play** button for about 3 seconds to turn on the player.
4. Select **Music** and press the **Play** button to enter.
5. Select a folder or a music file and press the **Play** button.
6. Use the player controls to adjust playback and volume level to listen to your WMA/MP3 music.

Lyric Display Function

The GPS data logger supports lyric files in LRC format.

1. Prepare a MP3 or WMA music file. For example, happymusic.mp3;
2. Download a lyric file from the internet. The lyric file needs to be with an extension file name LRC. For example, happymusic-2004.lrc.
3. Rename the lyric file. For example, happymusic.lrc. This ensures that the GPS data logger connects the lyric filename with the corresponding music filename.
4. Copy the lyric file & music file to the GPS data logger.
5. The lyrics would be displayed on the screen, synchronous with the music.




Note:

- ***The GPS data logger supports LRC format only.***
- ***If the lyrics do not synchronize perfectly with the music, this is not a defect of the GPS data logger. Check the lyric file or download a better lyric file from the internet and try again.***

GPS Walker User Manual

- **Make sure the MP3 music file and LRC file are located in the same directory and the filenames are the same. If not, the data logger can not recognize the lyric file.**

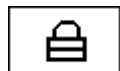
Basic Operation

- Press and hold the **Power**  button for about 3 seconds to turn on the GPS data logger.
- In playing mode press the **Play**  button to pause, or press it again to continue.
- Press (Λ/v) buttons to increase/decrease volume.
- Press the **Skip** buttons (<< / >>) to skip to the previous or next song; press and hold the **Skip** buttons to rewind or fast forward the current song.
- Press the **Menu** button to go back to previous menu.
- To turn off the GPS data logger, press and hold the **Power**  button until the screen turns completely dark.

Hold Function

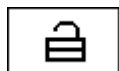
Use the Hold function to deactivate the GPS data logger controls (to avoid accidental activation).

1. To activate the hold function, press and hold the **Menu** button.



Locked

2. To deactivate the hold function, press and hold the **Menu** button.



Unlocked

Browsing the Main Menu

In the main menu, press the **Left** or **Right** button to select Menu options, and press the **Play** button to enter the menu. Press the **Menu** button to call up menu options or exit to the previous menu.

GPS Walker User Manual

Menu Structure

Main menu	Submenu/Status	Submenu	Description
GPS	GPS Signal		Showing the GPS signal status
	Log Interval	Off/1Sec/3Sec/5Sec/10Sec/ 15Sec	Setting the GPS log interval
	Min Speed	Off/2KMH/4KMH/10KMH	Setting the GPS log minimum speed
	Mark		Marking the current position as a waypoint
	Mark &Go		Marking the current location as a waypoint and setting the waypoint as the destination in Compass menu
	Select Mark		Selecting a history waypoint, or setting a waypoint and a destination in Compass page
	Compass		Showing the GPS compass information, Direction to destination, Distance to destination, Current Speed and ID of destination
	GPS Power	Off/On	Turning the GPS on/off
	About		Showing the F/W version
Music			Playing music
FM	AddToPreset		Saving the current station to preset station
	LoadPreset		Loading the saved preset station
	Delete		Deleting one preset station
	AutoScan		Searching all available stations automatically
	ManuScan		Searching stations one by one manually
	Return		Returning to FM listening interface
Time			Displaying time
Settings	Equalizer	Normal/Classic/Pop/Jazz /Xbass/Rock	Setting sound effect in music playback
	Repeat	Normal/Repeat One/Repeat All/Random/Random All	Setting repeat mode of music
	Backlight	3Sec/5Sec/10Sec/15Sec/ Always On	Setting the duration of the backlight
	Brightness	0/1/2/3/4/5	Setting the brightness level
	Contrast	0/1/2/3/4/5	Setting the contrast level
	SetTime		Setting time
	Language	English/ Simple Chinese/ Traditional Chinese	Selecting a language
	FM Band	87.5~108MHz 76~90MHz	Selecting a FM bandwidth
	About		Logger information
	Default		Resetting to factory default

Music

1. Select **Music** in the main menu and press the **Play** button to enter.
2. Press the **Up** or **Down** button to choose a song or folder.
3. Press the **Play** button to enter a folder or play music.



FM

The GPS data logger allows you to listen to FM radio with the built-in digital FM tuner.

Note: The earphones must be connected to the GPS data logger otherwise the FM tuner will not be able to scan any FM station.

Start the FM Tuner

To switch to FM radio mode, select **Radio** in the main menu and press the **Play** button.

If there is no station on the default list, press the **Play** button and select **AutoScan** to search all available stations. After auto search is finished, press the **Left** or **Right** button to listen to another station.



A.	FM icon
B.	Auto scan /manual scan
C.	Preset station number
D.	Frequency
E.	Battery indicator

Note: There are two FM bandwidth can be chosen, 87.5~108MHz and 76~90MHz (for Japan only). Enter the Settings menu to select the proper FM Band.

Using the FM Settings menu

To navigate the FM Settings menu in FM Radio mode, press the **Play** button to enter the FM Settings menu.

Item	Description
AddToPreset	Saving the current station to preset station.
LoadPreset	Loading the saved preset station.
Delete	Deleting one preset station.
AutoScan	Searching all available stations automatically.
ManuScan	Searching stations one by one manually.
Return	Returning to FM listening interface

Tuning into FM radio stations manually

To tune manually, press the **Left** or **Right** button. Each time when the buttons are pressed, the GPS data logger changes the frequency by 0.1MHz.

Advanced Settings

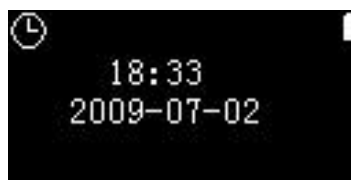
To navigate the Settings menu,

1. Select **Setting** in the main menu and press the **Play** button.
2. Press the **Up** or **Down** button to choose a setting and press the **Play** button to enter the submenu.
3. After setting is finished, press the **Menu** button to go back to the previous menu.

Settings	Equalizer	Normal/Classic/Pop/Jazz/Xbass/Rock	Setting sound effect in music playback
	Repeat	Normal/Repeat One/Repeat All/Random/Random All	Setting repeat mode of music
	Backlight	3Sec/5Sec/10Sec/15Sec/Always On	Setting the duration of the backlight
	Brightness	0/1/2/3/4/5	Setting the brightness level
	Contrast	0/1/2/3/4/5	Setting the contrast level
	SetTime		Setting time
	Language	English/Simple Chinese/Traditional Chinese	Selecting a language
	FM Band	87.5~108MHz 76~90MHz	Selecting a FM bandwidth
	About		Logger information
	Default		Resetting to factory default

Time

Select Time in main menu, and press the play button to display current time.



To set time, go to Settings>SetTime,

1. Press the Play button.
2. Press the Left or Right button to set the time and date.
3. Press the Up or Down button to adjust the value of each item.
4. Press the Play button to confirm.

Format the GPS data logger by using the Windows Format Tool

1. Connect the GPS data logger to the computer.
2. Right click on the disk representing the GPS data logger.
3. Select format and start the formatting process.

Note: Do not select NTFS from the Format File System menu. Otherwise, the GPS data logger will not function, and you will need to format it again.

GPS

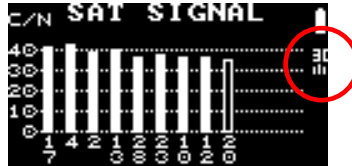
Menu options

GPS Menu	Description
GPS Power	Turning On/Off the GPS function.
GPS Signal	Showing the satellite signal strength. Need 3 solid bars for precise positioning.
	Press the Play button to show the Sat View Shows the satellite number being seen, satellite number being tracked.
	Press Play button again to show the Position Information such as Current Location coordinates, Date and Time will be shown.
Log Interval	Setting the time interval for GPS position logging. The data is logged in standard NMEA format.
Min Speed	Setting a value as the minimum speed for position logging. The system will log points only when the current speed is above this value. The minimum speed is valid only if Log Interval is enabled.
Mark	Marking the current location as a waypoint. This command is valid only when the current position fix is available (2D fix or 3D fix).
Mark&Go	Marking the current location as a waypoint and setting the waypoint as the destination in Compass menu. This command is valid only when the current position fix is available (2D fix or 3D fix).
Select Mark	Selecting a history waypoint, or setting a waypoint and a destination in Compass page. This command is valid only when the current position fix is available (2D fix or 3D fix).
Compass	Displaying following information: <div style="margin-left: 20px;"> Direction to destination Distance to destination Current Speed ID of destination </div> Follow the compass. It will guide you to the destination. This command is valid only when the current position fix is available (2D fix or 3D fix).
About	Information about the firmware version.

GPS Walker User Manual

Before marking waypoints

1. Press the **Menu** button to enter main menu.
2. Select **GPS** in the main menu.
3. Power on the GPS function. Press the **UP** button to select **GPS Power**, select **On**, and then press the **Play** button to confirm.
4. Select **GPS Signal** in GPS menu. You will see some signal strength bars. The height of each bar represents the strength of the satellite signal. Wait until there are more than 3 bars appearing. The screen will show **2D** or **3D** when the signal is strong enough to position.



5. Press the **Play** button to show the **Sat View**; you will see the satellite number being seen, satellite number being tracked.
6. Press the **Play** button again to show the **Position**; you will see current position information (Latitude, Longitude, and UTC Time).
7. Press the **Menu** button to exit.

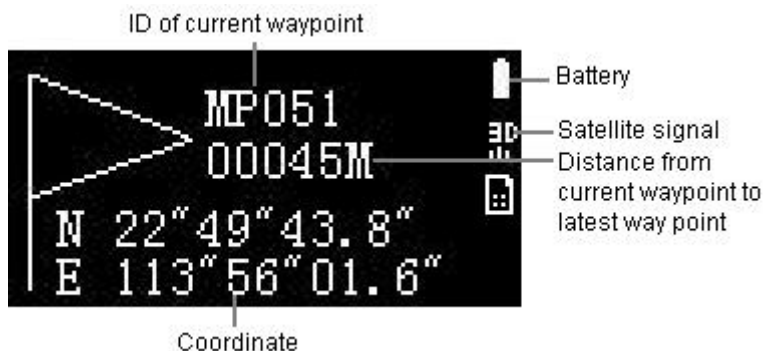
Marking waypoints manually

Select **Mark** in the GPS menu. The current location will be marked as a waypoint. You can manually mark waypoints wherever you want.



Note: the maximum number of waypoints is 1000.

Logging file is stored in the internal flash as be named GPS0XXXX.TXT; XXXX stands for a number from 0001 to 1000



Logging GPS trace

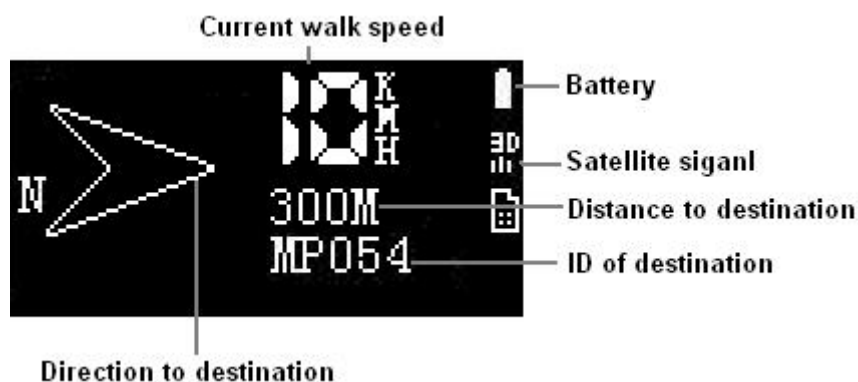
You can use the GPS data logger to record the trip automatically, and view your trace on the Google map.

GPS Walker User Manual

1. Select **Log Interval** in the GPS menu, and then select an interval to set the time interval for GPS position logging.
2. Select **Mini Speed** in the GPS menu, and then select a speed to set a value as the minimum speed for position Logging.
3. The system will mark trace log automatically in the interval when the current speed is above the min speed. The data is logged in standard NMEA format (*GPS_WPT.BIN*) in folder **GPS_DATA** on the internal flash of the GPS device.

Going to the marked waypoint

Select **Select Mark** to select a history waypoint or set a waypoint as the destination in Compass page. Follow the compass; it will guide you to the destination.

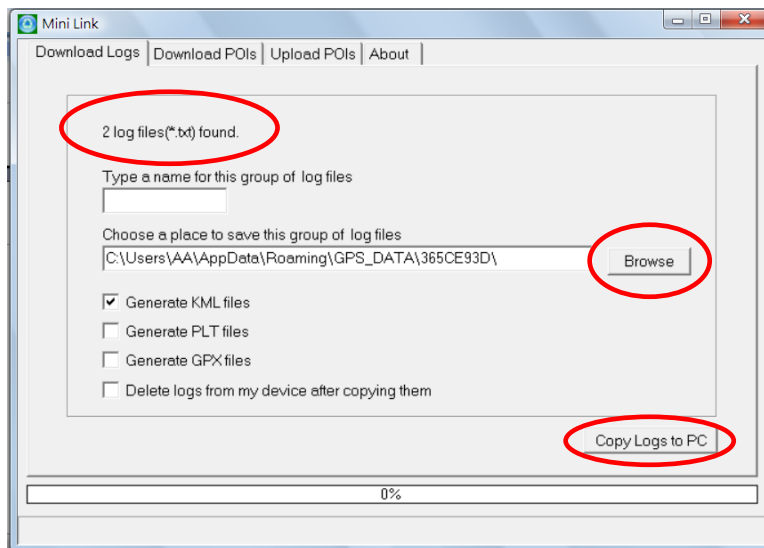
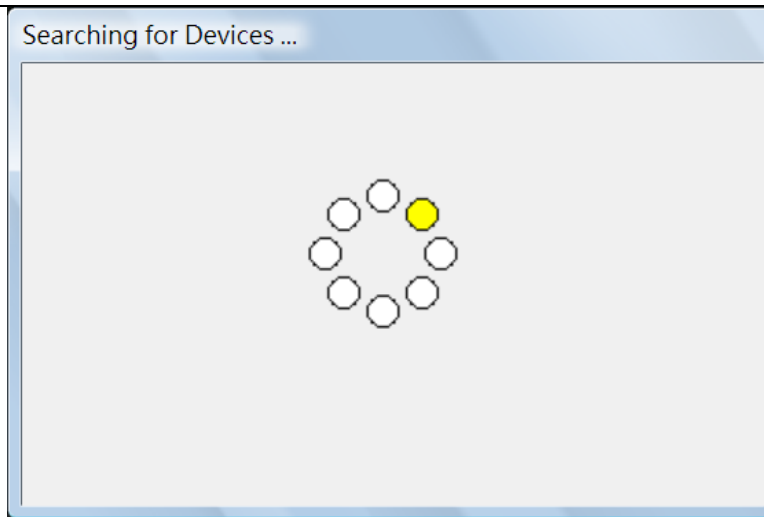


*Tip: Push the control key **up** to select the latest waypoint quickly.*

Viewing your trace on Google map

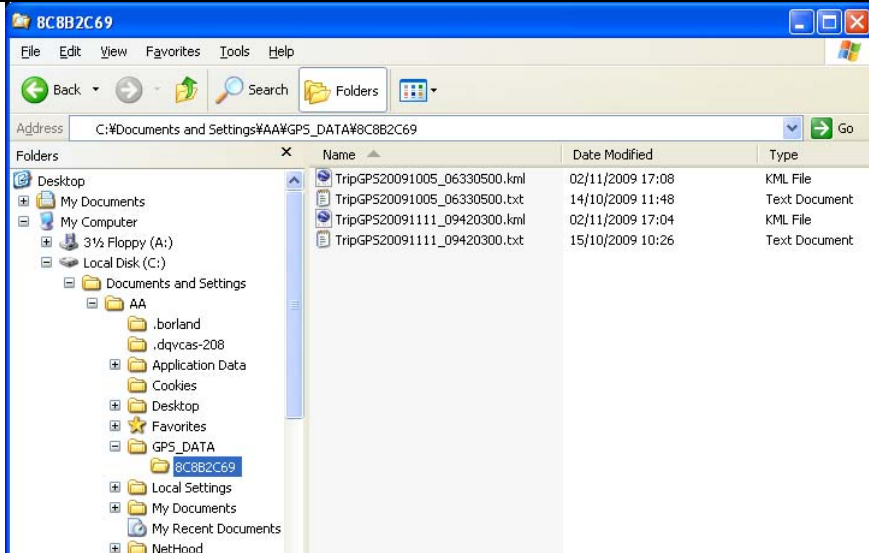
1. First we need records NMEA position data from the GPS data logger.
2. Select **GPS** in main menu, select **Log interval** and proper **Mini Speed** from the submenu to log the position where you are. You can mark other tracks by the same way. After the tracks have been marked, the device will create a record file "**GPS_WPT.bin**" on its internal flash.
3. Connect your device to a computer.
4. Run the software "MINILINK.exe". The screen shows the following information and the number of GPS log files are automatically shown.

GPS Walker User Manual

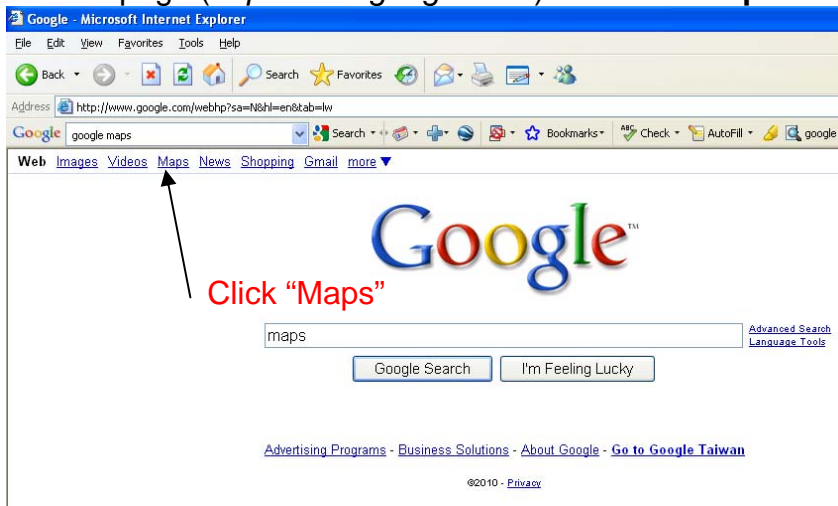


5. Type a name for this group of log files and choose a place to save them by clicking **“Browse”**.
 - Select a file type which you want to transfer.
 - You can also delete these logs under this function.
 - Then click **“Copy Logs to PC”**.
 - The folder in which you saved your log files will be open automatically.

GPS Walker User Manual

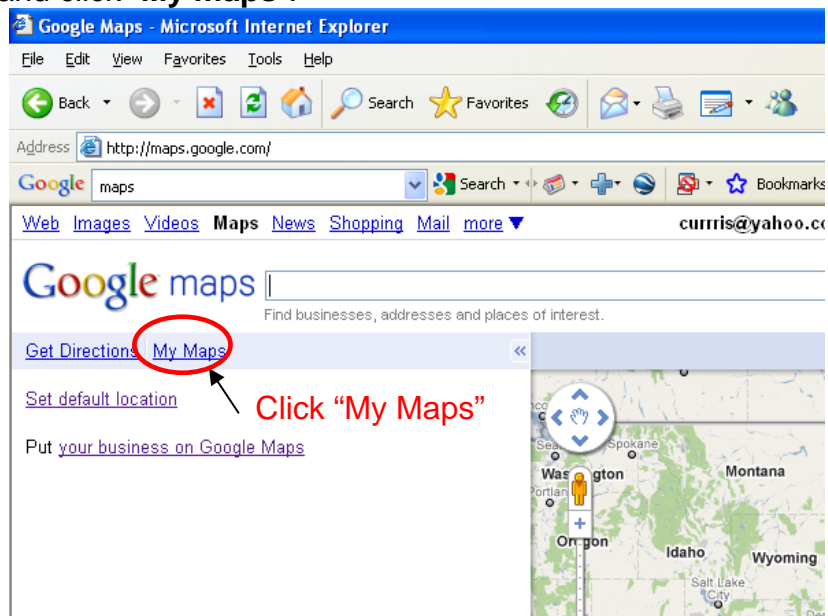


6. Go to Google home page (<http://www.google.com>) and click **“Maps”**.



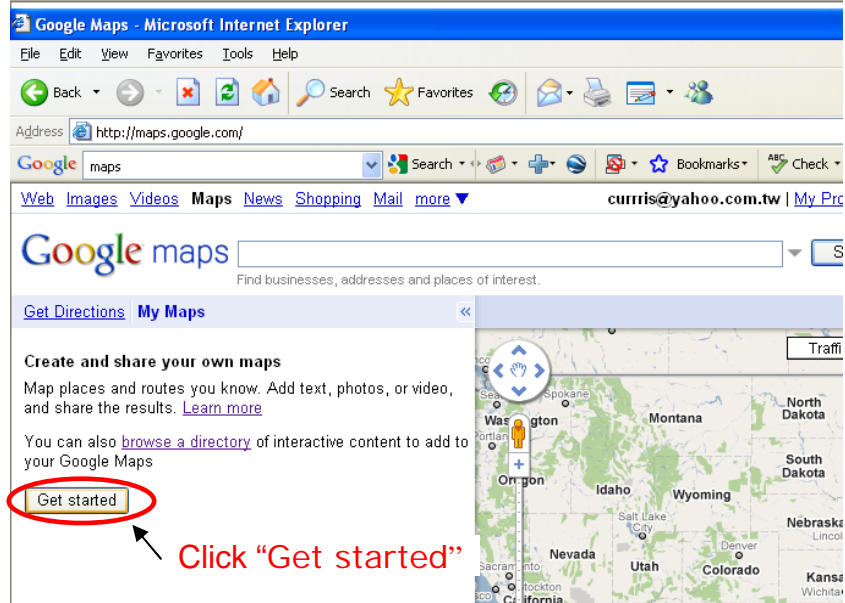
Note: You must register in Google website and sign in beforehand.

7. Go to Maps and click **“My maps”**.

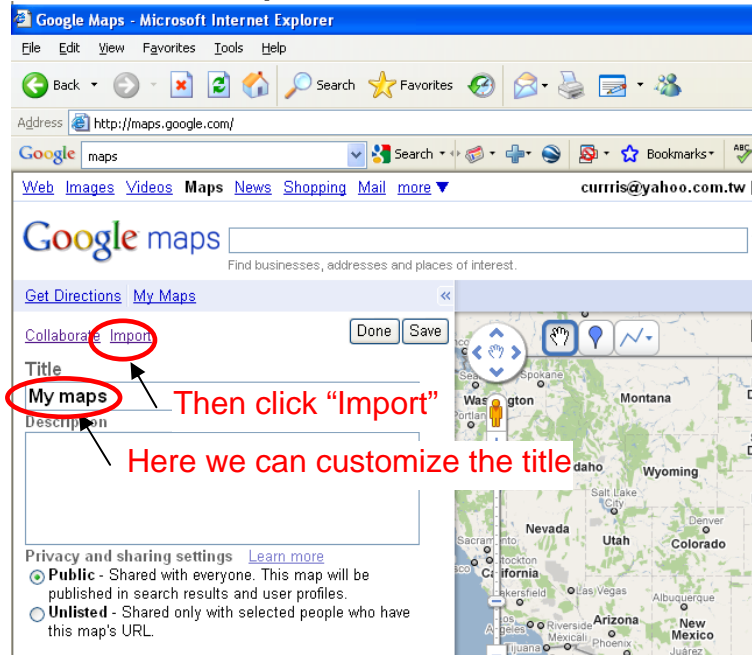


GPS Walker User Manual

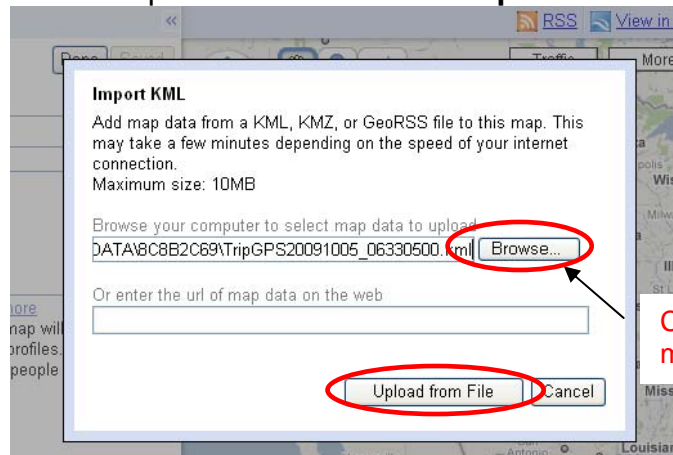
8. Go to My maps, and click “Get started”.



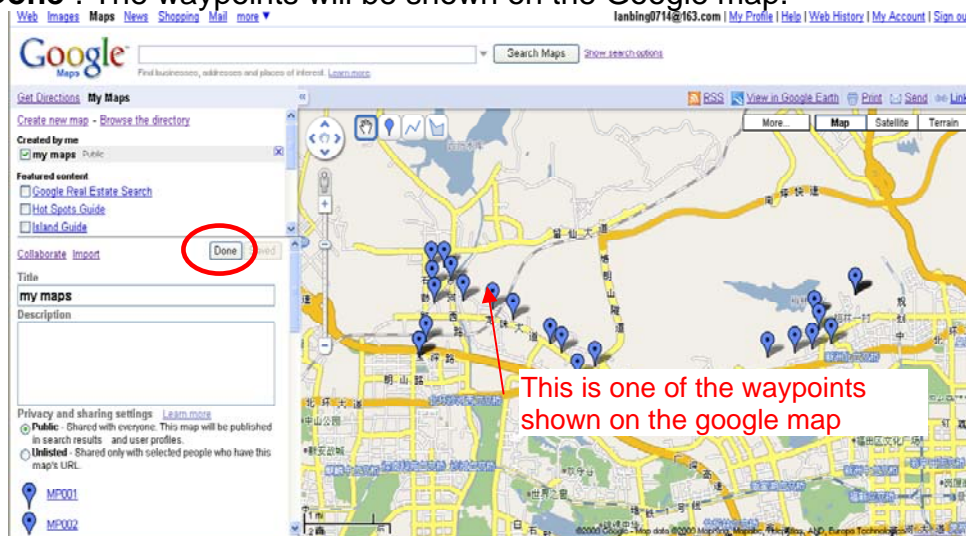
9. Type map title, and then click “Import”.



10. Click “Browse” to select map data. And then click “Upload from file”.



11. Click “Done”. The waypoints will be shown on the Google map.

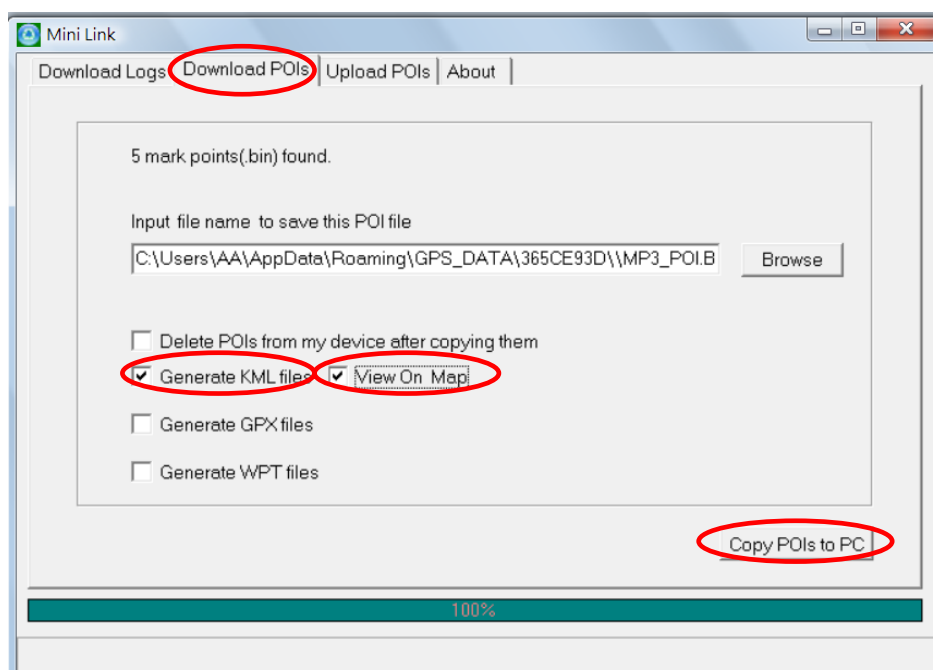


Download POIs and Viewing them on Google map

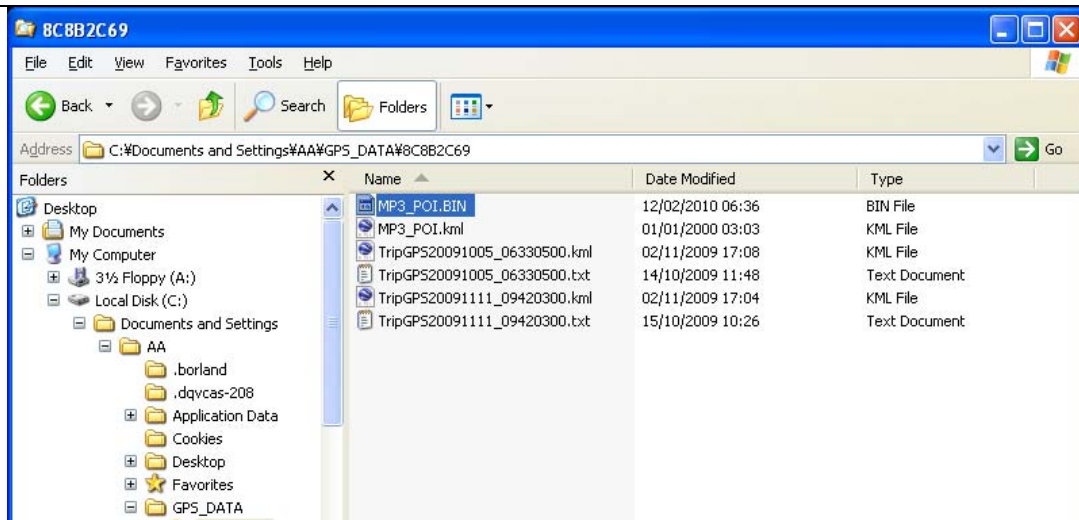
- Input a file name.
- Click “**Browse**” to select a folder to save the POI.
- Choose a format. If you choose KML, the POIs can be viewed on Google earth directly; and you can also view them on Google map directly by marking the **View on map**.

Note: You must download Google earth beforehand.

- Click “**Copy POIs to PC**”.
- The POIs have been downloaded to the destination folder.



GPS Walker User Manual

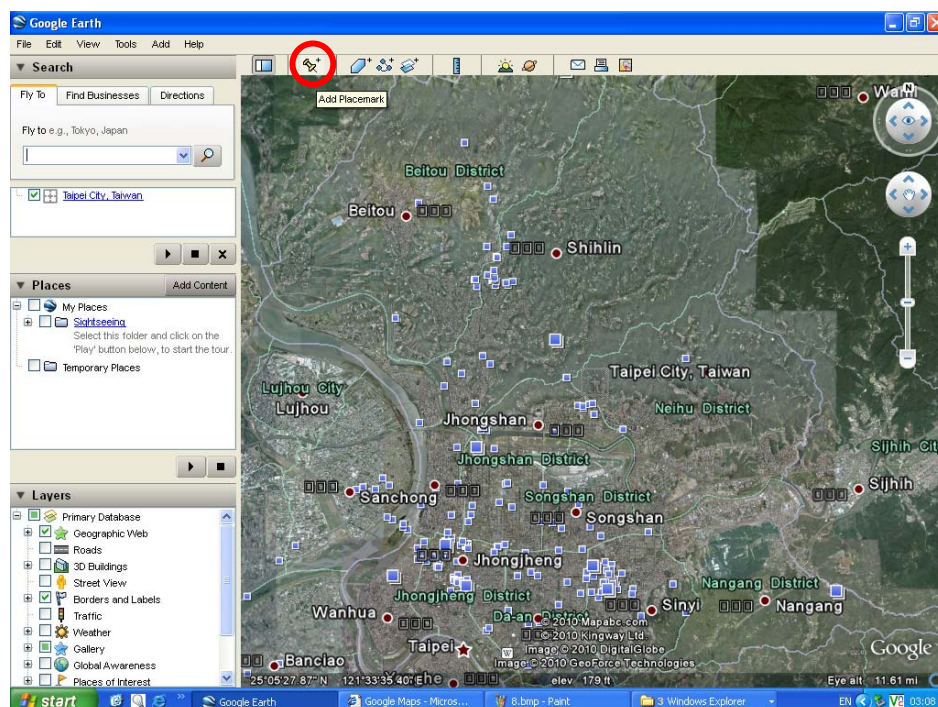


Uploading POIs to GPS data logger

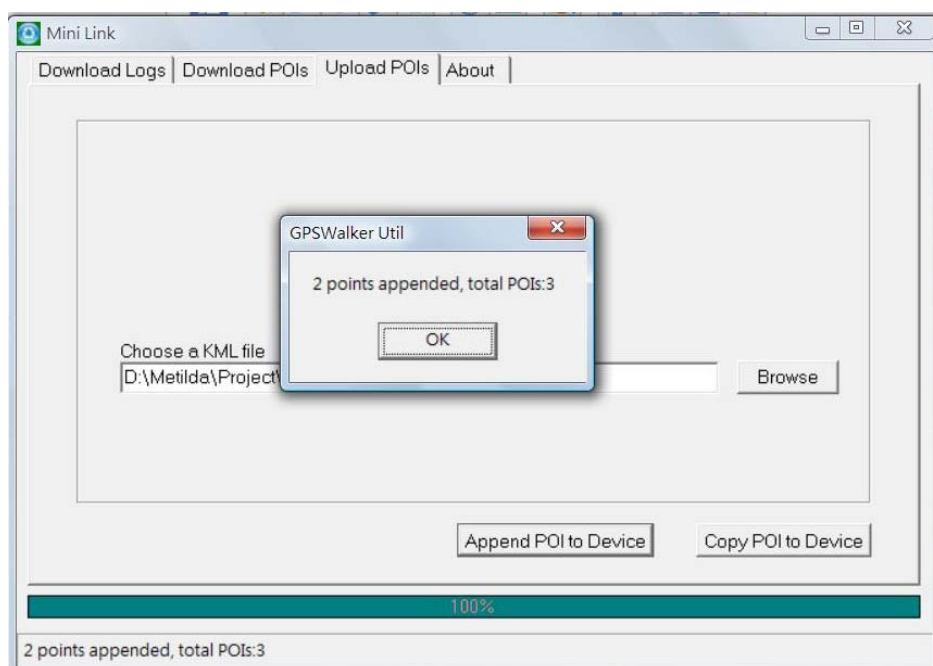
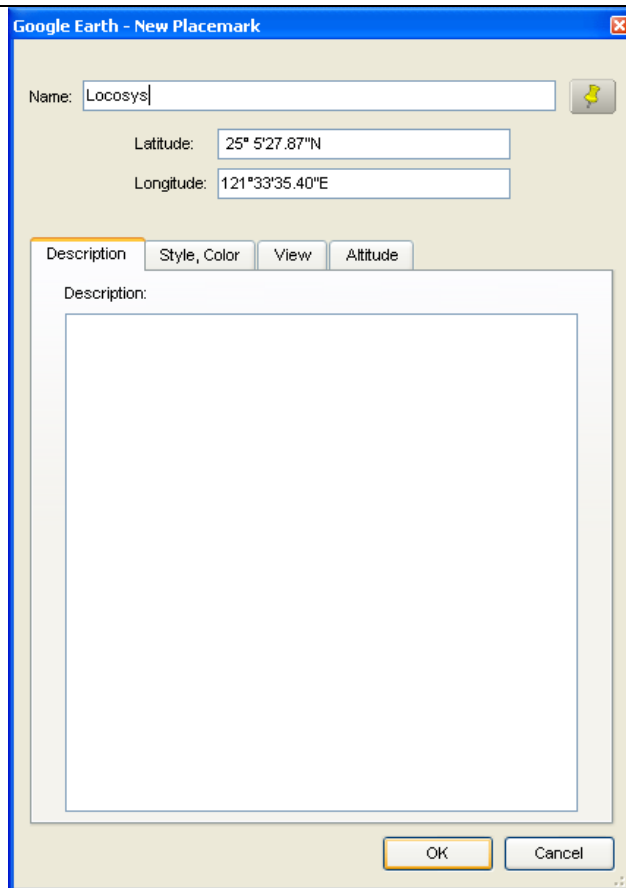
- Choose a waypoint in KML file from Google earth or other map application.
- You can choose **Append POI to Device** or **Copy POI to Device**
- **Append POI to Device** will append new mark points to device, maximum 1000 points, and mark points in device will be overwritten by choosing **Copy POI to Device**.
- You can set a POI as a destination by selecting **Mark**.

To catch a KML file from Google as a POI, follow the steps:

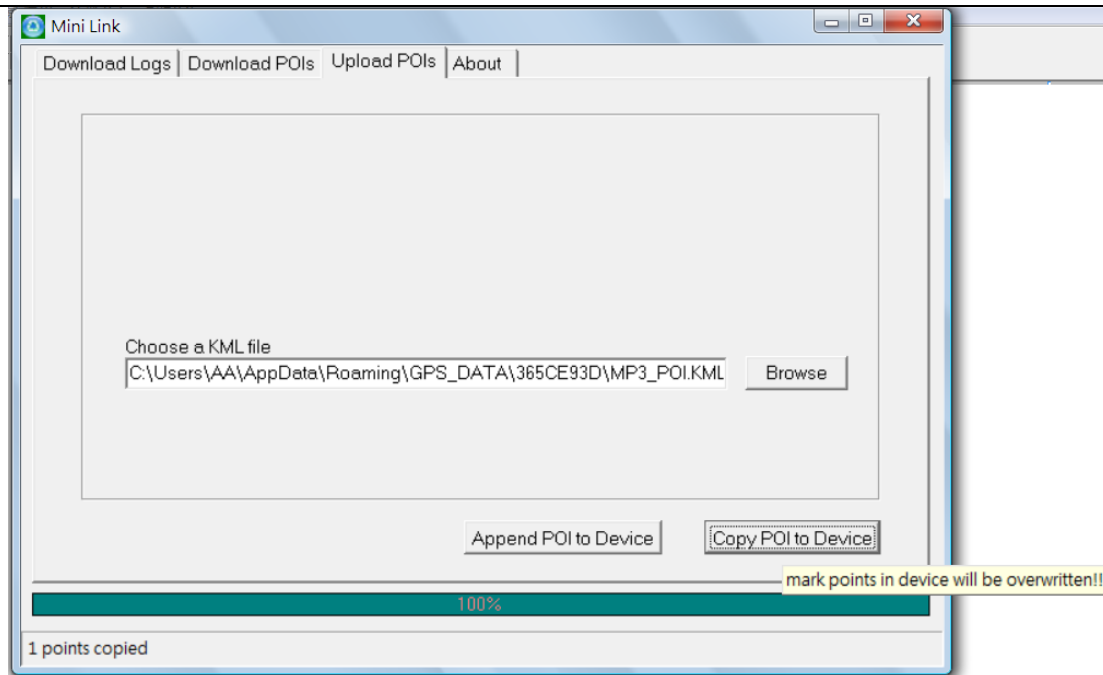
- Use **“New Mark”** to add a new mark
- Save it as a KML file and use the Upload function of MINILINK



GPS Walker User Manual



GPS Walker User Manual

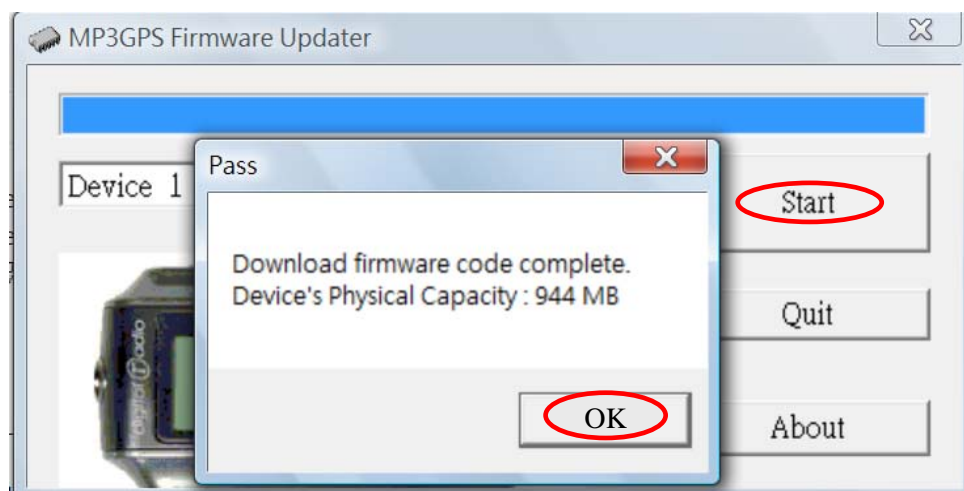


Checking F/W version

- The F/W information is shown in it

Upgrading GPS Walker F/W

- Connect with a PC.
- Run the MP3Updater.exe. After the device is shown, click **“Start”**
- Click **“OK”** after the Pass information is shown.



Battery

- For standalone applications, install a 1.5V AA battery into the battery compartment first.
- Changing the battery, if “LowPower” appears on screen or buttons do not response. The device shuts down automatically when the battery is low.
- The device playback, GPS on and standby time vary according to different types, brands and capacity of battery.
- Remove the battery to avoid damage caused by electrolyte leakage if the device is not going to be used for a long time.

CAUTION: Risk of explosion if battery is incorrectly replaced. Dispose of used batteries according to the manufacturer’s instruction”

Troubleshooting

Symptoms	Solutions
No sound	The volume level is too low to be heard. Increase the volume level by pressing the volume + button.
	The earphones may not be properly plugged into the earphone socket. Re-plug the earphones into the earphone socket carefully.
Intermission when playing music	The battery is low. Please replace the battery.
Sound distortion	The battery is very low. Please replace the battery.
Some music can't be played back.	The music files may be in an incompatible format. Make sure the music files are in MP3 or WMA format.
No response to pressing buttons	The Hold function is activated. Press and hold the Menu button to deactivate it. The player may malfunction due to improper operation. Remove the battery and reinstall it to reset the player.
Can not turn on the player after formatting the player with windows format tool.	The player may have been formatted with the NTFS file system. Reformat the player into FAT or FAT32 file system with the same windows format tool.
Can not turn on the player.	The battery is dead. Charge the battery.
	There is not enough space for system files.
	Delete some files to free up space.
	The player may have malfunctioned due to improper operation. Remove the battery and reinstall it to reset the player.
Can not receive GPS signal	It can receive the GPS signal only in an open area.

GPS Data Logger Specifications

Navigation features				
Point to point navigation	Mark and Go			
Waypoints	1000 points			
Data logger	2,000,000 points			
Format support	Google Earth KML format supported Standard GPX format supported			
GPS performance				
Chip	SiRF Star III High Sensitivity			
Frequency	L1 1575.42MHz, C/A code			
Channels	Support 20 channels			
Update rate	1 Hz			
Acquisition time	Hot start (Open Sky)	< 2s		
	Cold start (Open Sky)	37s (typical)		
Position/Velocity	10m (2D RMS)/0.1 m/s without SA (autonomous mode)			
Dynamics	Speed (max.)	515 m/s		
	Altitude (max.)	18000 m		
	Acceleration (max.)	4 g		
Differential GPS	SBAS			
Antenna	Built-in patch antenna			
MP3				
Format	WMA/MP3			
Equalizer	Normal, rock, jazz, classic, pop, Xbass			
Music play mode	Normal, Repeat one, Repeat all, Shuffle, Repeat Shuffle			
Background playing	Support			
FM				
Auto / Manual Scan	Support			
20 Presets	Support			
Power				
Operation time	Battery type	non-rechargeable		rechargeable
		Zinc Carbon	Alkaline	Nickel-metal hydride HiMH
	Only GPS data logger enable	2 ~ 3 hrs	6 ~ 11 hrs	9 ~ 12 hrs
	Only MP3 enable	6 ~ 10 hrs	18 ~ 20 hrs	15 ~ 17 hrs
	GPS data logger + MP3	2 hrs	5 ~ 9 hrs	8 ~ 10 hrs
<p><i>Note:</i> The operation time is depending on battery brand, type, capacity and operation temperature. For example, NiMH batteries have nominal charge capacities ranging from 1100 mAh to 2900 mAh at 1.2 V. The larger the capacity, the longer the operation time. Most batteries could reduce capacity at low temperatures. The operation hour of different battery type above is provided for reference only. For eco and economic reason, using rechargeable batteries is encouraged.</p>				
Interfaces				
Language	ENGLISH, 繁體中文, 简体中文			
Data format	NMEA 0183 SiRF binary format (firmware upgradeable)			

GPS Walker User Manual

USB connector	Mini USB	
Earphone jack	3.5mm	
OS support	Microsoft® Windows 2000/XP/Vista/Win 7 TM	
Storage Capacity	Built-in NAND flash	
Physical		
Size	80 x 37.8 x 26.6 mm	
Weight	35g (w/o battery)	
Display	Mode	Black/White, FSTN, Transflective
	Size	1.3inch (32mm x 16mm)
	Resolution	128W x 64H pixel
	Backlight	Blue
Environmental		
Operating temp.	-10°C ~ +40°C	
Storage temp.	-20°C ~ +55°C	
EMC standard	CE, FCC	
Accessories		
Standard	Earphone	
	USB cable	
	Neckstrap	
Optional	Strap	
	Arm strap	
Packing	Blister	

<Specifications are subject to change without notice>