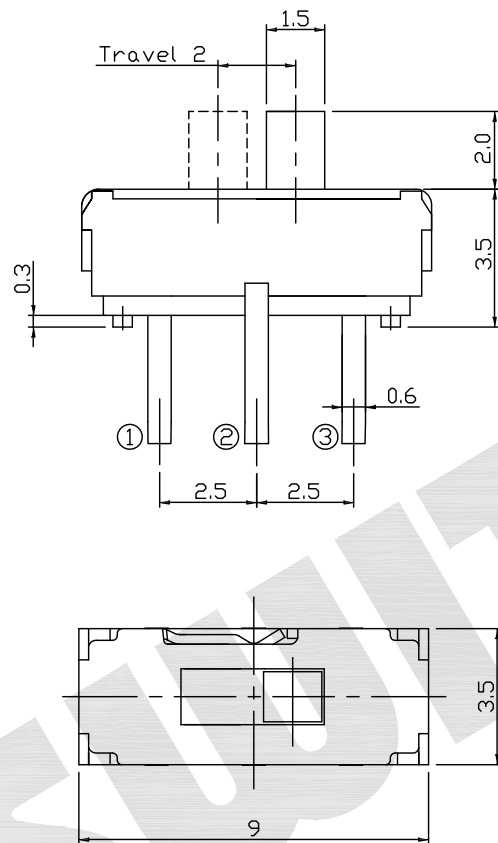


*開關產品未經SWITRONIC同意，請勿拆解，否則無法負品質及安全責任。
Please do not decompose the switch without any permission from SWITRONIC,
otherwise the quality and safety responsibility could not be guaranteed.

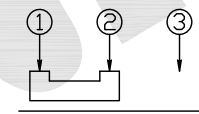
*本圖面若與目錄之規格尺寸不符，以本圖面規格尺寸為主。
Below is our main specification if different from catalog.

RoHS compliant

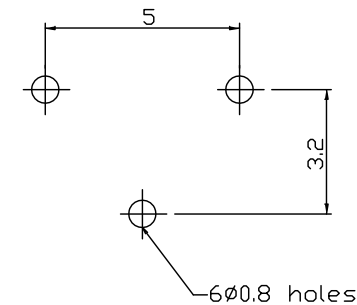
※ Reference only
(2019.12.18)



SCHEMATIC



P.C.B. LAYOUT



SPECIFICATION

Rating: 0.3A 6V DC.

Travel: 2.0 \pm 0.3mm.

Contact resistance: 70m Ω Max.(initial)

Operating force: 200 \pm 100g.

Life: 10,000 Cycles.

Soldering temperature: 250 $^{\circ}$ C Max. for 3 seconds.

Soldering time: 1 time only.

Note1: Unwashable, don't be immersed by epoxy and organic solvent.

Note2: Please do not scale the drawing comparing to real product and kindly measure the size of real product.

STORAGE METHOD

After opening the bag of the switches, please include a desiccant into the bag, then seal it to avoid product oxidation.

打開包裝袋後，請在袋中加入乾燥劑並「密封」，避免產品氧化。

產品 PRODUCT	Slide Switch		型號 MODEL NO.	IS-1235-G
製圖 DRAWN BY	核圖 CHECKED BY	主管 APPROVED BY	單位 UNIT	mm
Eddie Chien	Chuck Young	Margaret Lee	比例 SCALE	4 : 1
			公差 TOLERANCE	.X= \pm 0.3mm, .XX= \pm 0.2mm

SWITRONIC[®]
INDUSTRIAL CORP.
Switches



一綺電子企業股份有限公司

總公司：110 台北市信義路四段415號13樓之3
13F-3, NO.415, SEC.4, HSIN YI ROAD, TAIPEI, TAIWAN
TEL : 886-2-27290229(Rep.) FAX : 886-2-27582086
URL : www.switronic.com E-MAIL : switches@ms36.hinet.net