



Supertech ELECTRONIC CO., LTD.

客戶名稱：

規格型號：JHS16KN2B104L20KC

Electical Characteristics 電氣特性

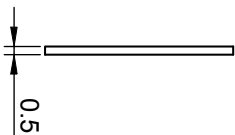
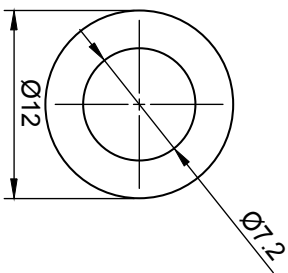
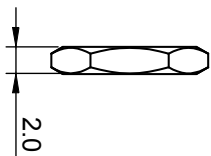
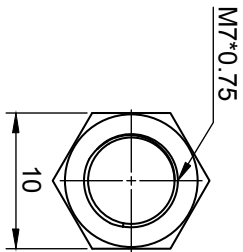
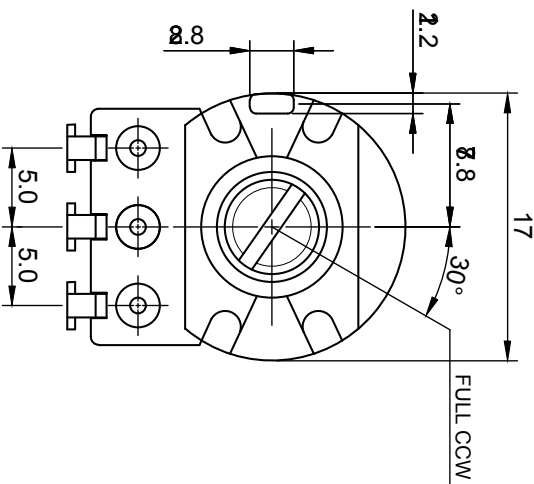
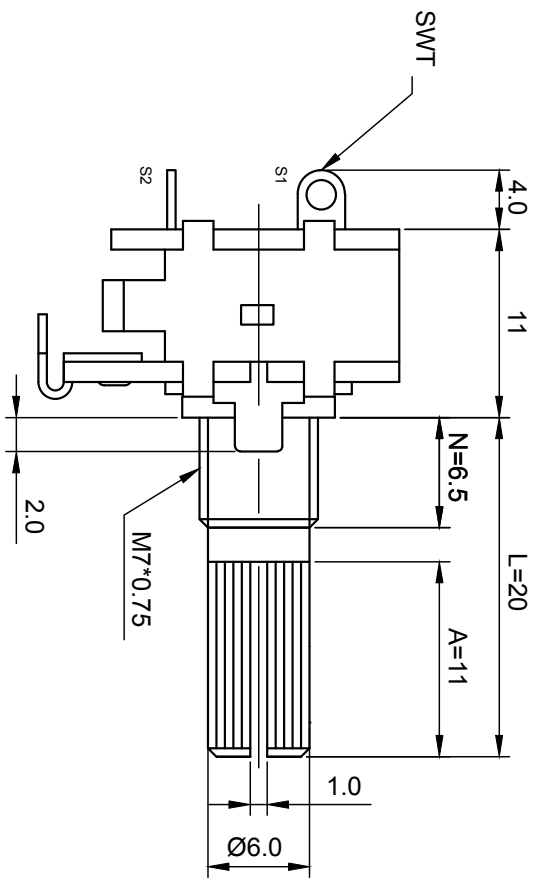
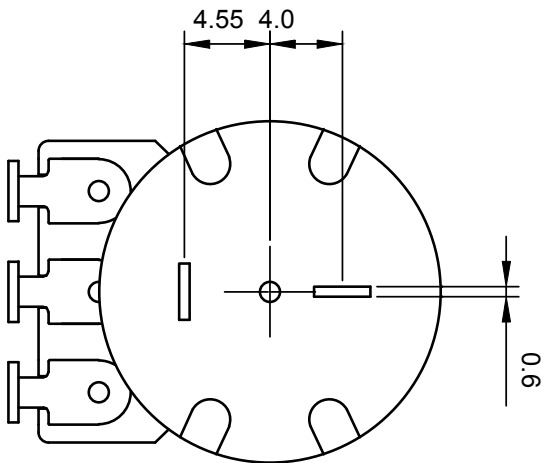
總阻值(R) Total resistance	100 K
總阻值容許誤差 Total resistance tolerance	±20%
阻值線性 Resistance taper	B
摺動雜音 Sliding noise	Less than 47mV
殘留阻值 Residual resistance	≤ 20 Ω (R > 10K) ≤ 10 Ω (R ≤ 10K)
開關接觸電阻 Switch contact resistance	Less than 50 mΩ
定格電力 Rated power	Linear(B)taper:0.125W Other taper:0.06W
額定電壓 Rated voltage(V)	$E = \sqrt{P \cdot R}$ E= Rated voltage 額定電壓(V) P= Power rating 額定電力(W) R= Nominal total resistance 公稱全阻抗值(Ω) 當額定電壓超過最高使用電壓的時候，最高使用電壓即為額定 When the rated voltage exceeds the maximum operating voltage, the maximum operating voltage shall be the rated voltage.
開關定格電力 Switch rated power	125V / AC 1A
最高使用電壓 Max. operating voltage	Linear(B)taper:200V Other taper:150V
絕緣阻抗 Insulation resistance	More than 100 MΩ at DC 500V
耐電壓 Withstand voltage	1 minute at AC 500V

Mechanical Characteristics 機械特性

全回轉角度 Total rotational angle	300°±5°
全回轉扭力 Rotational torque	30~200 gf.cm
開關扭力 Switch action	50~350 gf.cm
軸推拉強度 Shaft push-pull strength	7Kgf max
全回轉止強度 Rotational stopper strength	6Kgf max
迴轉壽命 Rotational life	15000 cycles (Switch life 開關壽命:10000 cycles)

General 一般事項

使用溫度範圍 Operating temperature	-10°C ~ +70°C
手工焊接 Manual soldering	300°C max 3 sec

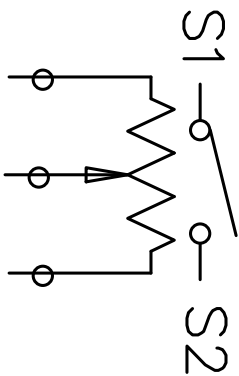


NUT

WASHER

2 3

CIRCUIT



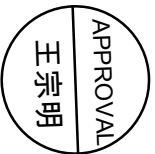
未标注公差	
10 以下	±0.3
10 ~100	±0.5
100 以上	±0.8



Supertech ELECTRONIC CO., LTD.

规格型号: S16KN2(KC/CI)

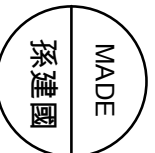
核准:



审核:



制图:



单位

mm

比例

3:1

项目

修正内容

修正人

日期

版本

1.0

制图日期

2009.06.08

项目

修正内容

修正人

日期

编号

S16KN-008

第三角法

修正记事