

Model No.	LSBHTS
REV.	C1

PRODUCT SPECIFICATION FOR **Automotive LED Ribbon Light**

Descriptions:

- Linear separable LED strip on flexible printed circuit board with self-adhesive back
- Long life, easy installation, IP65
- Voltages available 12VDC
- Numbers of LED: 15pcs of RGB 5050 SMD

Features:

- Available in RGB color
- Directly use on line voltage
- Low power consumption, high intensity
- Energy saving
- Excellent beam control
- Long life

Application:

- Inside of Auto lighting
- Channel letter signs
- Indirect accent décor light
- Large area back lighting
- Under counter light
- Decorate building's contour
- Substitute neon light

Product Picture:





Model No.	LSBHTS
REV.	C1

Device Selection Guide

Module No.	Color	Dom. Wavelength (Typ.)	Intensity / Per LED (Typ.)
LSBHTS	Red	625±5nm	750mcd
	Green	525±5nm	1120mcd
	Blue	470±5nm	400mcd

Absolute Maximum Ratings(Ta=25°C)

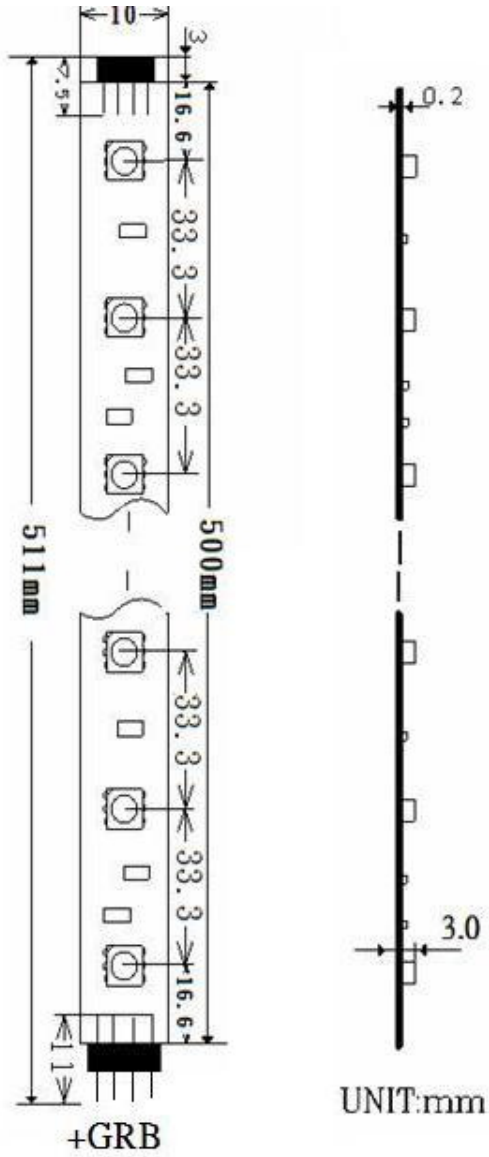
Items	Symbol	Values	Units
Operating Supply Range(DC)	V _{dc}	14	V
Input Current (DC)	I _i	0.45	A
Power Dissipation	P _a	6.3	W
LED Light Source Temperature	T _{led}	105	DegC
Operating Temperature	T _{ope}	-10 ~ +40	DegC
Storage Temperature	T _{sto}	-20 ~ +80	DegC

Typical Performance (Ta=25°C)

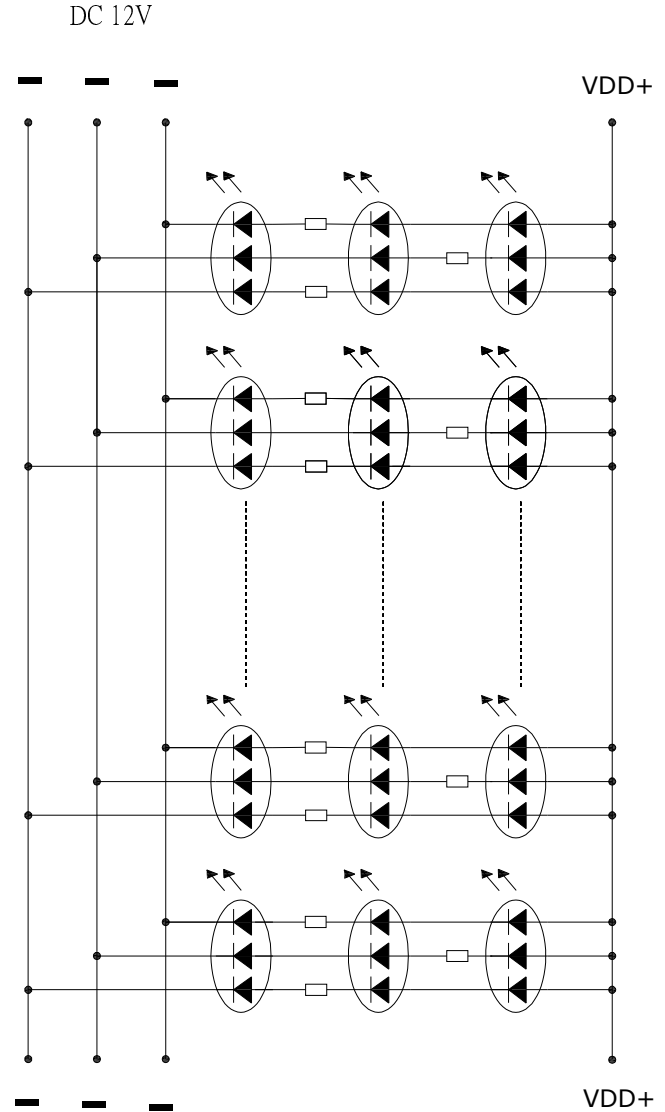
Items	Symbol	Min.	Typ.	Max.	Units
LED Module Power	P _m	-	3.6	6.3	w
Input Voltage(DC)	V _i	-	12	14	V
Product Input Current	I _f	-	0.3	0.45	A
Beam Pattern	BP	-	120	-	Deg
LED Quantity	QTY	-	15	-	PCS
Total Length of Modules (Including Pin)	L _{mod.}	-	511	-	mm
Net Weight	Wei.	---	15	---	g

Model No.	LSBH7S
REV.	C1

Product Dimensions:



RGB color strip



Model No.	LSBH7S
REV.	C1

Packing information:

Box Dimensions
Unit: mm

