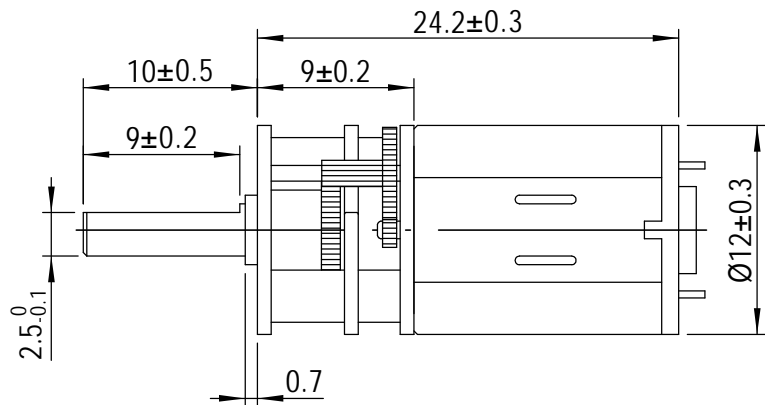
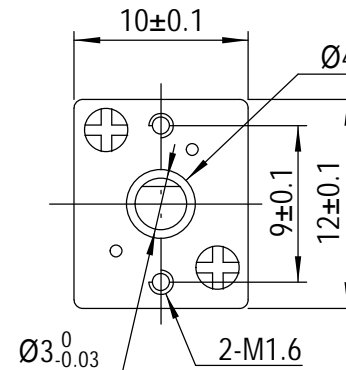


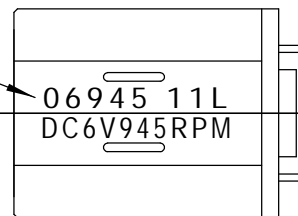
+ 正极



Dual(+/+CW)



激光印字
此面印字



PARAMETERS

1. NOMINAL: DC 6V
2. NO LOAD SPEED: 945 ±12%RPM
NO LOAD CURRENT: ≤0.04A
3. RATED LOAD SPEED: 700 ±12%RPM
RATED LOAD TORQUE: ≥0.02Kgf.cm
RATED CURRENT: ≤0.06A
4. PERMIT MAX TORQUE: 0.1Kgf.cm
5. STALL CURRENT: 0.14A
6. GEAR RATIO: 11:1
7. ROTATION DIRECTION: CW/CCW

CONTROL SIGNATURE:

THE INFORMATION CONTAINED IN THIS DRAWING IS CONFIDENTIAL. COPYRIGHT

A		1ST ISSUE	200318
REV.	EPO#	DETAILS	DATE

SCALE	UNIT	mm
	SIZE	A4
DRAWN XQ		
CHECKED		
APPROVED		

MERCURY MOTOR	
MATERIAL	TITLE
	MG1012-06945-11L
FINISH	SHEET 1 OF 1 REV A
	DWG.NO. MG1012-1215-MR11#