

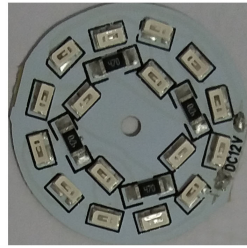
Descriptions:

- Ultra thin and super light
- High lumen output
- Low power consumption
- Voltage available in **DC12V**
- LED Type: 3014 SMD LED
- PCB Size: $\Phi 25 \times 0.6$ mm

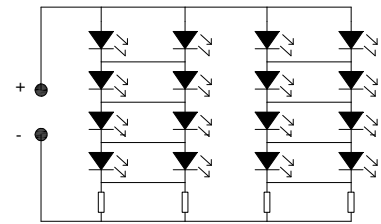
Application:

- Auto lighting
- Channel letter signs
- Indirect accent décor light
- Large area back lighting
- Under counter light
- Decorate building's contour
- Substitute neon light

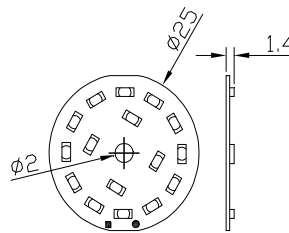
Photo



Circuit Diagram



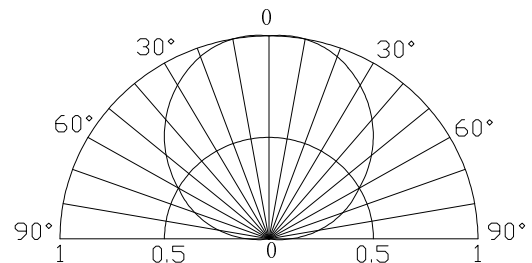
Outline Dimension



Unit: mm
Tolerance: ± 0.2

Typical Performance (Ta=25°C)

Items	Symbol	Min.	Typ.	Max.	Units
LED Module Power	Pm	-	1	1.6	W
Input Voltage(DC)	Vi	-	12	13	V
Input Current	If	-	84	123	mA
Beam Pattern	BP	-	120	-	Deg
Operating Temperature	Topr	-30	-	85	°C
Storage Temperature	Tstg	-40	-	100	°C
LED Quantity	QTY	-	16	-	PCS
PCB Diameter	Lmod.	-	25	-	mm



Device Selection Guide

Module No.	Color	Dom. Wavelength	Overall Luminous Flux (lm)
OERS16W414	Pure White	5500~6500K	192
OERS16M514	Warm White	2800~3200K	176
OERS16B414	Blue	455~465nm	32
OERS16G514	Pure Green	520~530nm	88
OERS16Y514	Yellow	585~595nm	40
OERS16R514	Red	620~630nm	40