

S Shape LED Strip
48 x SMD5050 /Meter
OSW0TC548S

Descriptions:

- Low power consumption
- Voltage available in **DC12V**
- LED Type: 5050 SMD LED
- With a self-adhesive back
- Flexible copper PCB with good ductility

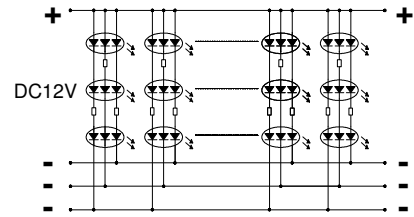
Application:

- Auto lighting
- Channel letter signs
- Indirect accent decor light
- Large area back lighting
- Under counter light
- Decorate building's contour
- Creative art lighting & advertising word

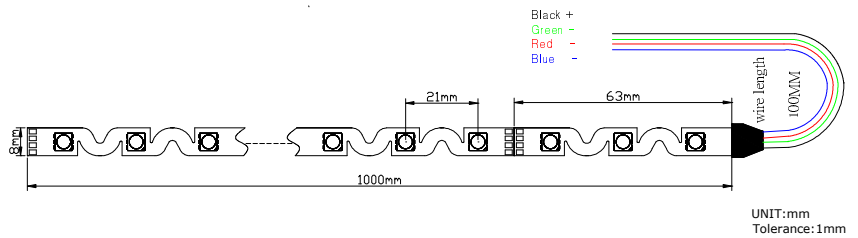
Photo



Circuit Diagram

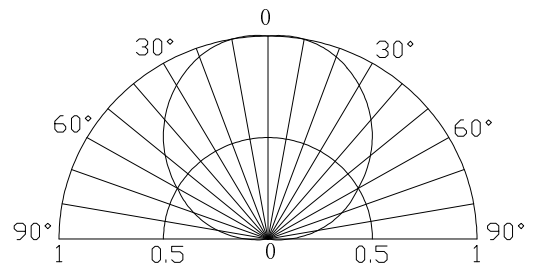


Outline Dimension



Typical Performance (Ta=25°C)

Items	Symbol	Min.	Typ.	Max.	Units
LED Module Power	Pm	-	11.5	16.2	w
Input Voltage(DC)	Vi	-	12	13.5	V
Input Current	If	-	0.96	1.2	A
Beam Pattern	BP	-	120		Deg
Operating Temperature	Topr	-30	-	85	°C
Storage Temperature	Tstg	-40	-	100	°C
LED Quantity	QTY	-	48	-	PCS
Total Length	Lmod.	-	1000	-	mm



Device Selection Guide

Module No.	Color	Dom. Wavelength	Intensity / LED (Typ.)
OSW0TC548S	Red	625±5nm	180 mcd
	Green	525±5nm	900 mcd
	Blue	470±5nm	200 mcd