

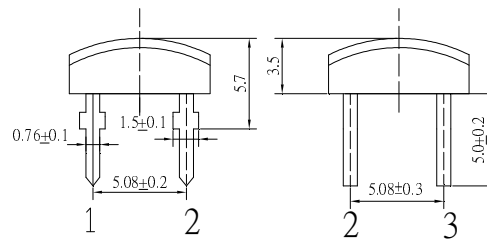
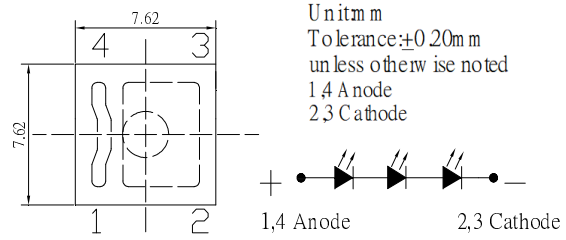
■Features

- High Luminous Super Flux Output
- Superior Weather-resistance
- UV Resistant Epoxy
- Long Lifetime Operation
- Water Clear Type

■Applications

- General Purpose Indicators
- Small Area Illuminations
- Back Lighting
- Other Lighting

■Outline Dimension



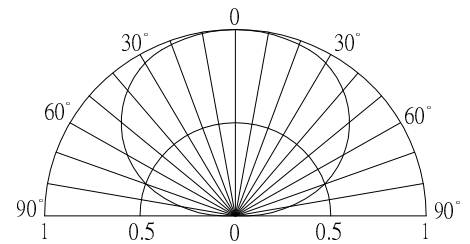
■Absolute Maximum Rating

($T_a=25^{\circ}\text{C}$)

Item	Symbol	Value	Unit
DC Forward Current	I_F	30	mA
Pulse Forward Current#	I_{FP}	100	mA
Reverse Voltage	V_R	15	V
Power Dissipation	P_D	324	mW
Operating Temperature	T_{opr}	-30 ~ +85	$^{\circ}\text{C}$
Storage Temperature	T_{stg}	-40 ~ +100	$^{\circ}\text{C}$
Lead Soldering Temperature	T_{sol}	260 $^{\circ}\text{C}$ / 5sec	-

#Pulse width Max.10ms , Duty ratio max 1/10

■Directivity



■Electrical -Optical Characteristics

($T_a=25^{\circ}\text{C}$)

Item	Symbol	Condition	Min.	Typ.	Max.	Unit
DC Forward Voltage*1	V_F	$I_F=30\text{mA}$	8.9	9.3	10.8	V
DC Reverse Current	I_R	$V_R=15\text{V}$	-	-	10	μA
Luminous Intensity*2	I_v	$I_F=30\text{mA}$	7500	10000	-	mcd
Luminous Flux*3	Φ_v	$I_F=30\text{mA}$	-	30	-	lm
Color Temperature*4	CCT	$I_F=30\text{mA}$	-	8000	-	K
Chromaticity Coordinates*5	x	$I_F=30\text{mA}$	-	0.29	-	
	y	$I_F=30\text{mA}$	-	0.32	-	
50% Power Angle	$2\theta_{1/2}$	$I_F=30\text{mA}$	-	140	-	deg

*1 Tolerance of measurements of forward voltage is $\pm 0.1\text{V}$

*2 Tolerance of measurements of luminous intensity is $\pm 15\%$

*3 Tolerance of measurements of luminous flux is $\pm 15\%$

*4 Tolerance of measurements of color temperature is $\pm 10\%$

*5 Tolerance of measurements of chromaticity coordinates is $\pm 10\%$

InGaN LED

TYPICAL ELECTRICAL/OPTICAL CHARACTERISTIC CURVES

