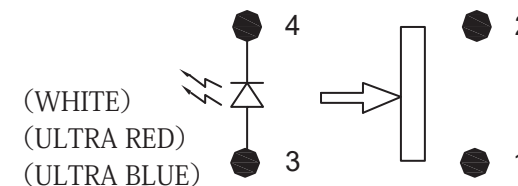
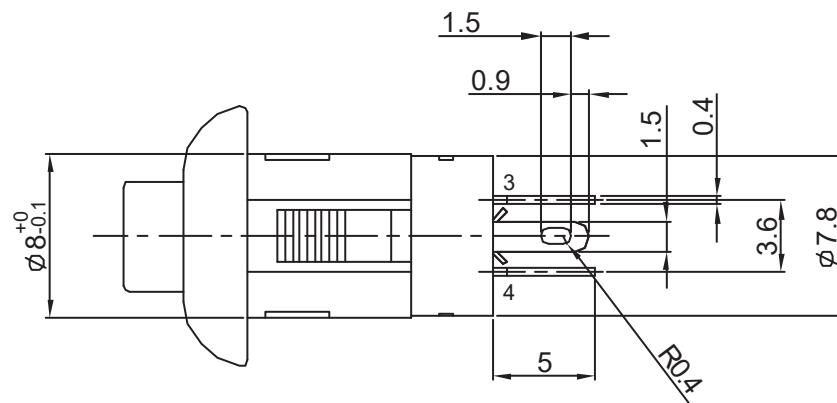
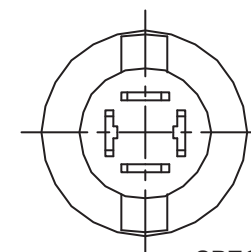
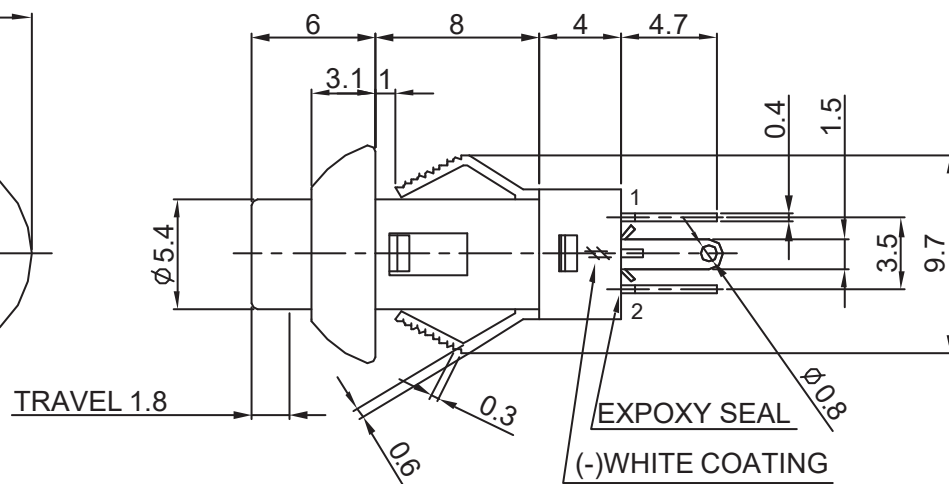
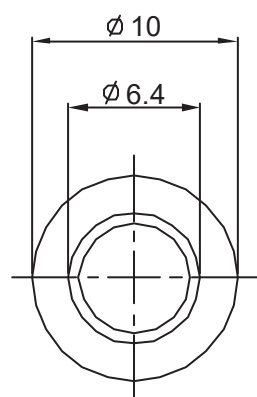


# 參考資料









SCHEMATIC



## SPECIFICATIONS:

1. MODE:1N.O.,MOMENTARY
2. RATING: 30V DC,100mA
3. INSULATION RESISTANCE: 500V DC, 100M  $\Omega$ .
4. OPERATING TEMPERATURE: -40  $^{\circ}$ C~+85  $^{\circ}$ C.
5. OPERATING FORCE: 250  $\pm$ 100gf.
6. MECHANICAL LIFE:50,000 CYCLES.

ROHS COMPLIANCE

ROHS COMPLIANCE				CODE NO.		MODLE NAME		PB01-11A-L <span style="border: 1px solid black; display: inline-block; width: 20px; height: 15px;"></span> <span style="border: 1px solid black; display: inline-block; width: 20px; height: 15px;"></span> N-3M						
				PATH :		Switch\Rubber push button switch\Spec		DRAWING NO.		PB-008				
				TOLERANCES		APPROVED SIGNATURES	DRAWN BY	CHECKED BY	APPROVED BY	SCALE	1 / 1	UNIT	m/m	VERSION
				Third Angle Projection	below 10	±0.3		鐘學峰	余倩	鐘學峰	 可正欣有限公司 TOP-UP INDUSTRY CORP.			
				10~100	±0.5									
	2009.4.17	zhong xuefeng	品名更改，原： PB-11A-LED-M-3M	above 100	±0.8									
	2008.10.18	Yu qian	首次出圖	angle dimension	±3°		2009.4.17	2009.4.17	2009.4.17					

# 機種規格說明書

## ( SPECIFICATION )

本公司使用機種:

OUR PART NAME

**Push Button Switch (LED)**

本公司使用名稱:

OUR PART NAME

**PB01-**

**-3M**

客戶名稱:

CUSTOMER'S NAME

Page : 1 OF 3

Version : A

Drawing NO. : PB-008

**1. Pole - position :** 1P1T, momentary type.

**2. Operating temperature range :** -40 °C ~ 85 °C

**3. Rating :** 30V DC 0.1A

**4. Electrical performance :**

	Item	Test Conditions	Criteria
4.1	Contact Resistance	DC 1.5V 100mA , by method of voltage drop	50mΩ MAX
4.2	Insulation Resistance	DC 500V	100MΩ MIN.
4.3	Dielectric Strength	AC 500V for 1 minute .	Breakdown is not allowable.

**5. Mechanical performance :**

	Item	Test Conditions	Criteria
5.1	Operating force	Along operating direction to apply a static load at end of actuator to depress until it stops movement	250±100gf
5.2	Robustness of terminal	200 gf for 1 minute	Terminal could be Bent but loosened Terminal or base Frame broken is not Allowable
5.3	Robustness of actuator	1. To apply a static force 2 Kg vertically on the top Of actuator , depress it 2. To apply a static force 300 g vertically at 1 mm Below top of the Actuator , pull it 3.To apply a static force 300 g horizontally from Any direction at 1 mm below top of the actuator , purh it	Actuator broken or Any unusual Appearance occurred On switch construction is not Allowable

備 注:  
(REMARK)

核 準  
APPROVED

審 核  
REVIEWED

經辦者  
PREPARED

余 倩

鐘學峰

張 艷

2009.4.22

2009.4.22

2009.4.22

TOP-UP INDUSTRY CORP.

# 機種規格說明書

## ( SPECIFICATION )

本公司使用機種:

OUR PART NAME

**Push Button Switch (LED)**

本公司使用名稱:

OUR PART NAME

**PB01-**

**-3M**

客戶名稱:

CUSTOMER'S NAME

Page : 2 OF 3

Version : A

Drawing NO. : PB-008

	Item	Test Conditions	Criteria	
5.4	Solderability	260±5℃ in 3 seconds	Solder coverage 75% MIN.	
6. Resistance of soldering heat				
6.1 manual soldering : 300±5℃ in 3 seconds				
6.2 Dip soldering : 260±5℃ in 3 seconds				
7. Durability				
Operating life without load after 50,000 cycles				
7.1 Contact resistance : 1000mΩ MAX				
7.2 Operating force:				
Within the range ±30% of specification				
7-3Insulation resistance : 500V DC 10 MΩ MIN.				
7-4 Dielectric strength : AC 500V for 1 minute, breakdown is not allowable				
備 注: (REMARK)		核 準 APPROVED	審 核 REVIEWED	經辦者 PREPARED
		余 倩	鐘學峰	張 艷
		2009.4.22	2009.4.22	2009.4.22

TOP-UP INDUSTRY CORP

# 機種規格說明書

## ( SPECIFICATION )

本公司使用機種:

OUR PART NAME

Push Button Switch (LED)

本公司使用名稱:

OUR PART NAME

PB01-

-3M

客戶名稱:

CUSTOMER'S NAME

Page : 3 OF 3

Version : A

Drawing NO. : PB-008

### 8. Environmental performance

	Item	Test Conditions	Criteria
8.1	Cold	-40±2℃ for 48 hours	1. It should meet requirements of item 4 2. Mechanical performance should remain to normal
8.2	Dry Heat	85℃±2℃ for 48 hours.	1. Contact resistance should be less than 100 mΩ 2. It should meet requirements of 4-2 and 4-3 3. Mechanical performance should remain to normal
8.3	Damp Heat	40℃±2℃, 90%~95% rh for 96 hours.	1. Contact resistance should be less than 100 mΩ 2. Insulation resistance should be higher than 10 mΩ 3. It should meet dielectric strength requirement of 4-3 4. Mechanical performance should remain to normal

### 9. Led specifications

Led specifications will be furnished depending on led color

#### ROHS COMPLIANCE

備注:

(REMARK)

核 準  
APPROVED

審 核  
REVIEWED

經辦者  
PREPARED

余 倩

鐘學峰

張 艷

2009.4.22

2009.4.22

2009.4.22

TOP-UP INDUSTRY CORP