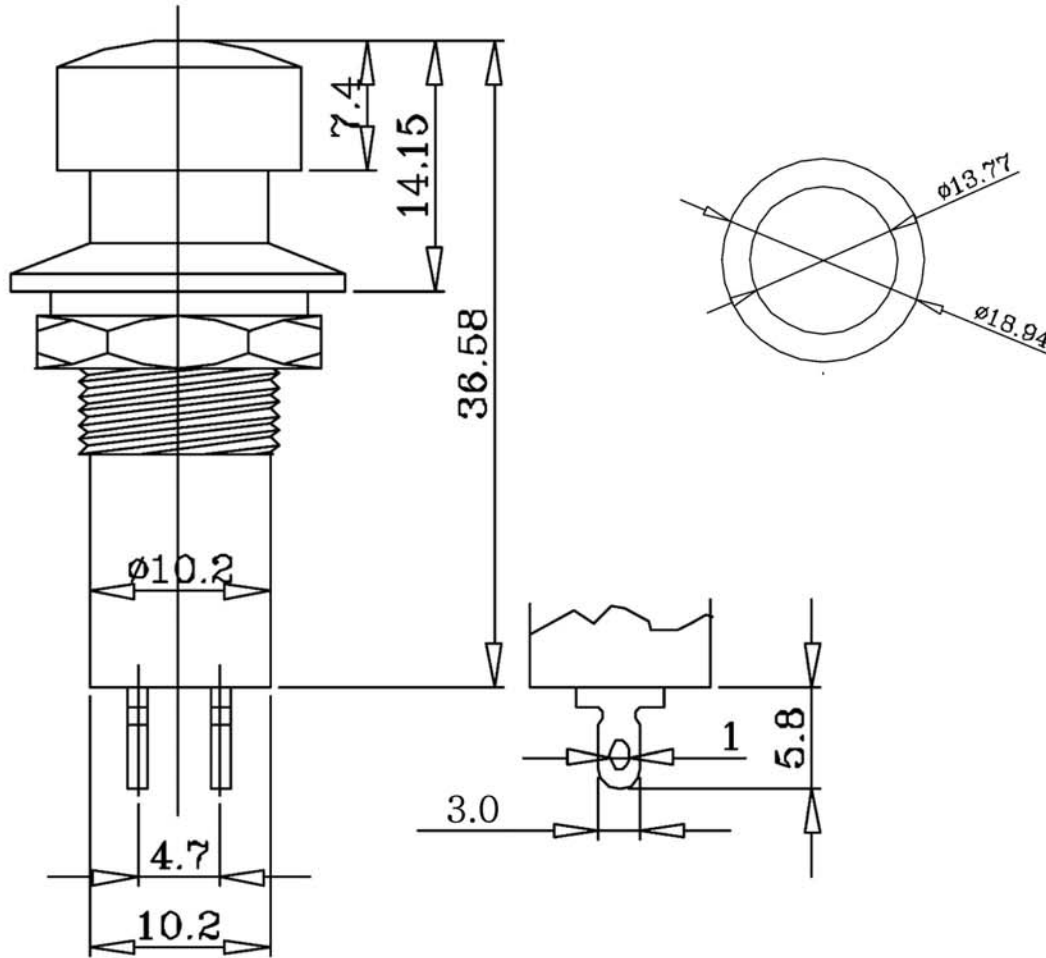


# SPECIFICATION



1. RATING: 1A/125VAC,
2. CONTACT RESISTANCE: 30m Ohm Max.
3. INSULATION RESISTANCE: DC 500V 100m ohm Min.
4. DIELECTRIC STRENGTH: AC 1000V 1 Minute.
5. ELECTRICAL LIFE: 5000 CYCLE Min.
6. MECHANICAL LIFE: 10,000 CYCLE Min.
7. TERMINAL MATERIAL: Copper alloy with gold plated.
8. PUSH FORCE: >0.3KG.

Model No.	TYPE
PS21A	OFF-ON
PS21B	OFF-(ON)
PS21C	ON-(OFF)

No.	Cap Color
1.	White
2.	Black
3.	Red ( Std.)
4.	Orange
5.	Yellow
6.	Green
7.	Blue
8.	Brown
9.	Gray



**COSLAND CO., LTD.**

E-Mail: [cosland@cosland.com](mailto:cosland@cosland.com)

	符號	原尺寸	修改後尺寸	變更日期
1	Ⓐ			
2	Ⓑ			
3	Ⓒ			
4	Ⓓ			
5	Ⓔ			

SCALE (比例):

TOLERANCE (公差):  
 0.00 mm ± 0.25mm  
 0.0 mm ± 0.40mm  
 ANGULAR : ± 2.54 mm  
 FILE NAME : PS21

TITLE 圖名	Pushbutton Switches			SIZE 圖紙	A4
DWG NO. 圖號	PS21			UNIT 單位	inch mm
REV. 版本	A	DATA 日期	12-12-2002	SHEET 張數	1 of 1
CHECKED BY 審核	Jack		DRAWN BY 製圖		