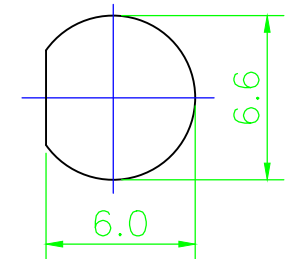


Mounting Holes



Dimensions Are In Millimeters
Unless Otherwise Specified Tolerances



COSMTEC RESOURCES CO., LTD

NO	Description	Material	Finish
1	Body	Brass	Nickel
2	Contact	Brass	Gold
3	Insulator	Teflon	White
4	Lock Washer	Brass	Nickel
5	Nut	Brass	Nickel

TOLERANCES		DRAFT	Part No							
0.5-6 =	± 0.2	LIU	圖號	S-003						
6-30 =	± 0.4	CHECKED	Title	SMA PLUG SOLDER BULKHEAD T. G. N.						
30-120 =	± 0.6	CHE	圖名							
120-315 =	± 1.0	APPROVED	Date	JAN/21/2009	比例	Scale	單位	Unit	版	Rev
315-1000 =	± 1.6	MINGON	日期		3:1	mm	m/m	次	A	
1000-2000 =	± 2.4									