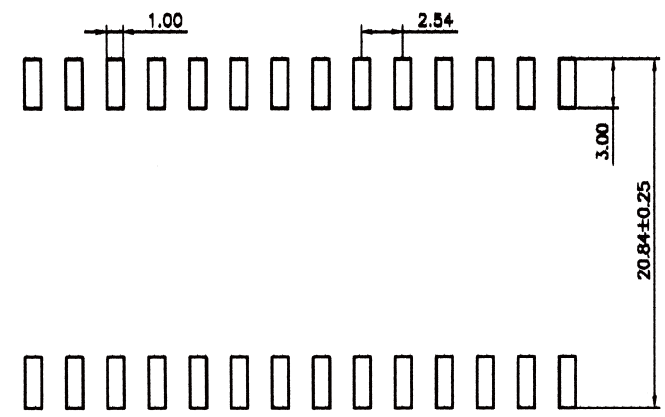
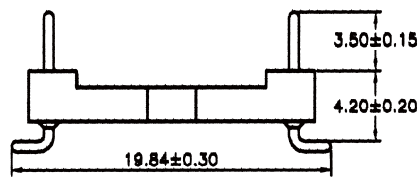
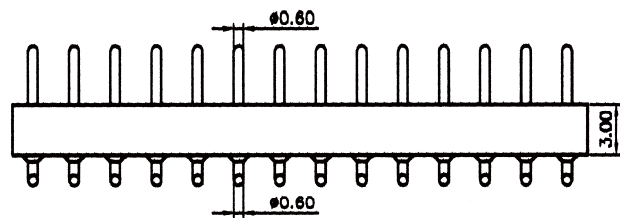
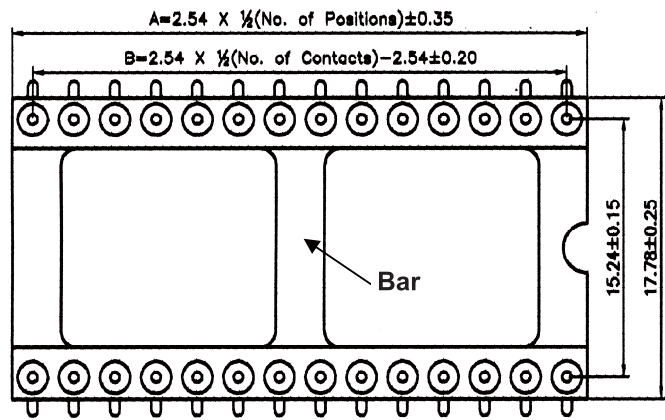


RoHS Compliant

參考資料



P.C.B LAYOUT

Contact	Dim A	Dim B	Dim C	Dim. D	Spacing
20	25.40	22.86	7.62	10.16	300
24	30.48	27.94			
28	35.56	33.02			
24	30.48	27.94	15.24	17.78	600
28	35.56	33.02			
32	40.64	38.10			
40	50.80	48.26			
42	53.34	50.80			
48	60.96	58.42			
64	81.28	78.74	22.86	26.00	900

Material & Finishes

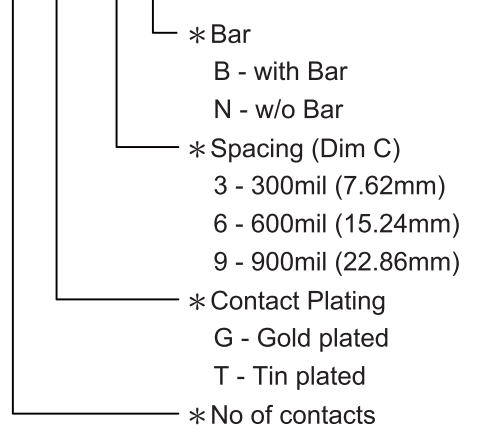
Insulator : PPS, UL94V-0
 Contacts : Brass, machined CuZn38Pb2
 Plating (Outer sleeve) : Tin plated 80u" Ni, 200u" Sn
 Plating (Contact) : 2um/80u" Ni, Gold or Tin overall plated


Specification

Current Rating : 3 Amp
 Voltage Rating : 60V AC/DC
 Insulation Resistance : 1,000 MΩ min.
 Contact Resistance : 4 mΩ max.
 Operation Temperature Range : - 40°C ~ + 105°C
 Soldering temperature : + 260°C, 10seconds max.

Order Information

SMHI - 00 G - X X



E				Drawn:	General Tolerance			 Useconn Electronics Ltd.	Part No.
D					.0	.00	.000		SMHI - 00G - XX
C				Checked:	±0.30	±0.20	±0.10		File No. SMHI-00G-XX
B	30-Apr-13	Change Logo			Unit : mm				
A	19-Mar-12	new release		Appraisal:	Scale :				Title: 2.54mm Machine Pin Header, IC type
Rev.	Date	File	BY		Sheet : 1/1			Insulator height 3.0mm, Total Pin Length 10.0mm	