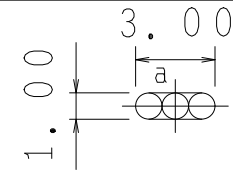
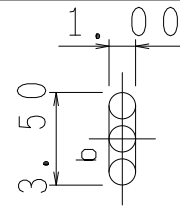


a 長穴 1.0 x 3.0 T, H-1

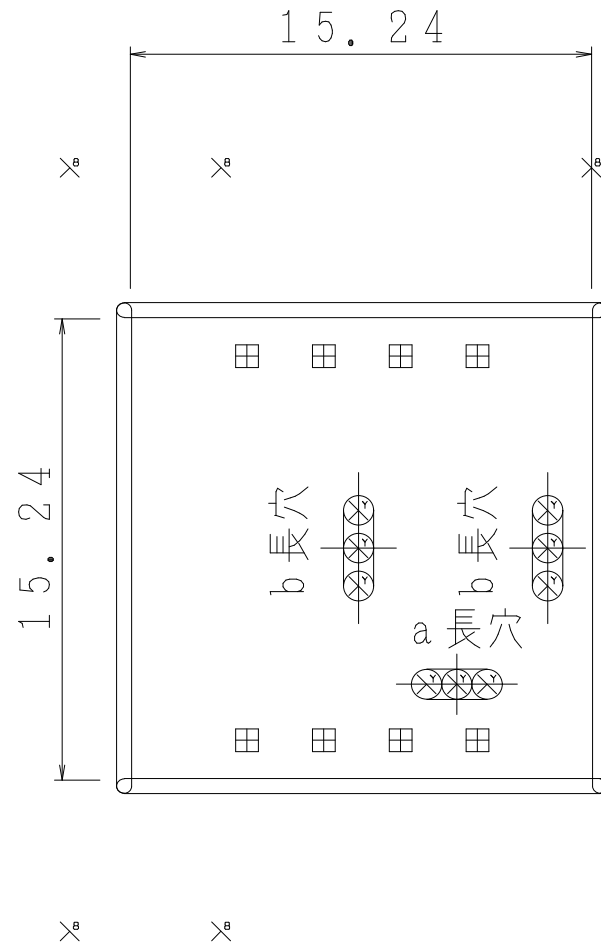


b 長穴 1.0 x 3.5 T, H-2

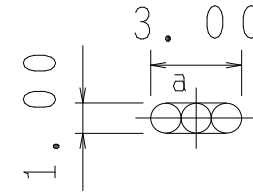


# AE-DC-POWER-JACK-DIP-変換基板穴明加工図

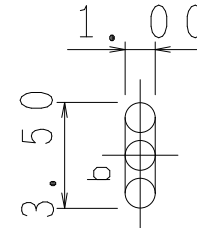
穴記号	Tコード	穴径 (mm)	穴種別	個数
田	1	0.7000	スルー	8
×	2	1.0200	スルー	9
× <sup>6</sup>	3	1.0300	スルー	6
				23

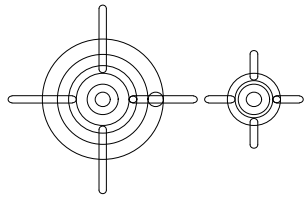
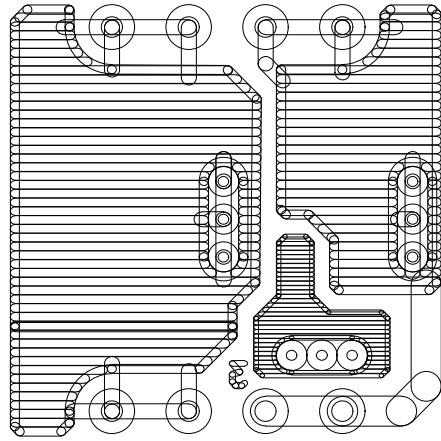


a 長穴 1.0 x 3.0 T, H-1

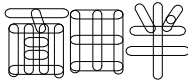


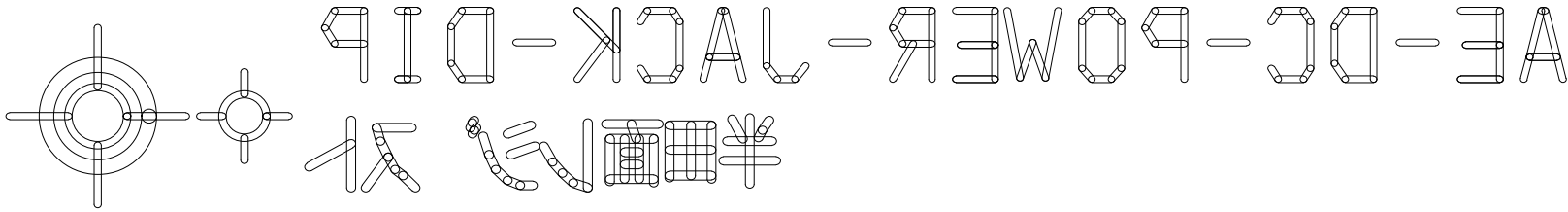
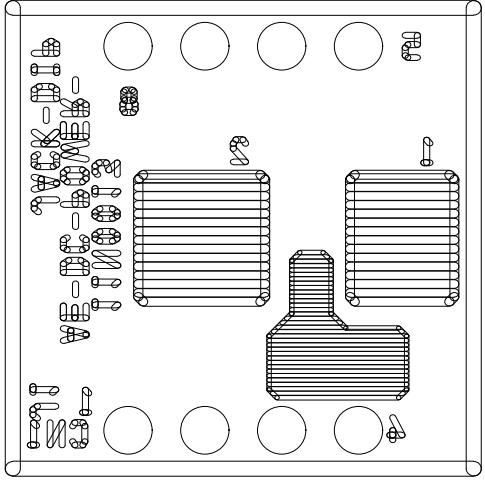
b 長穴 1.0 x 3.5 T, H-2

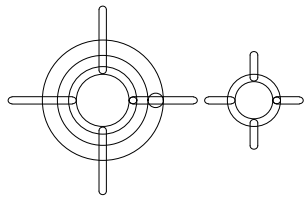
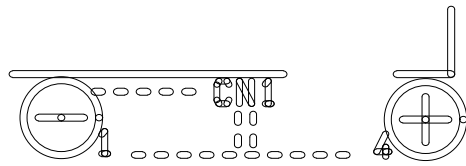
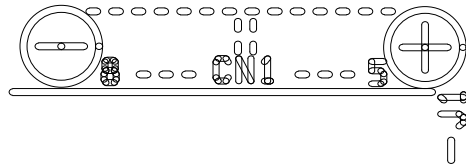
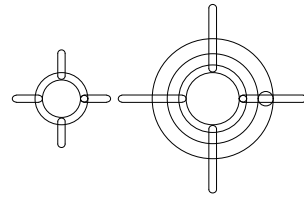
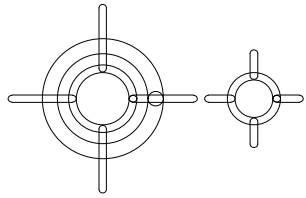




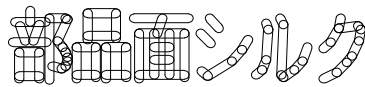
AE-DC-POWER-JACK-DIP

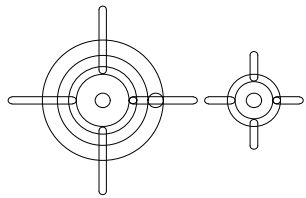
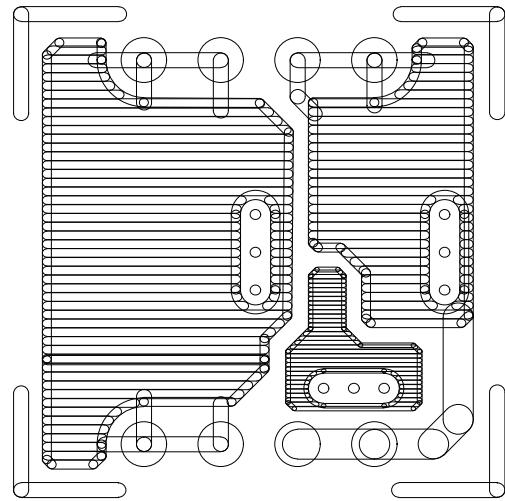
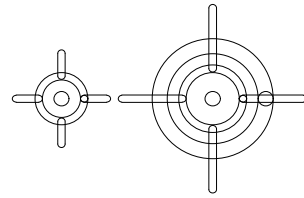
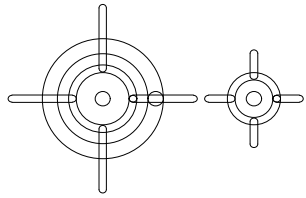






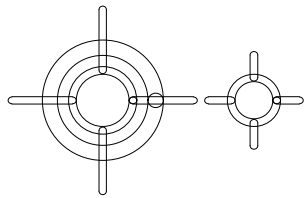
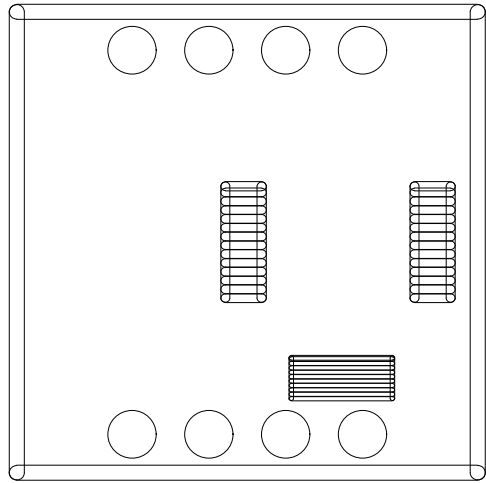
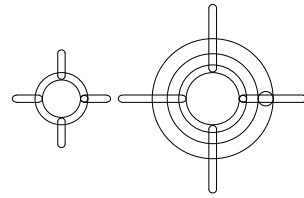
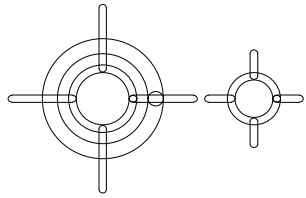
AE-DC-POWER-JACK-DIP



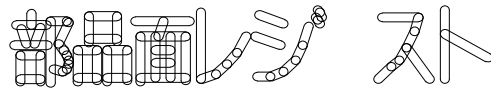


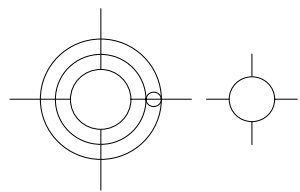
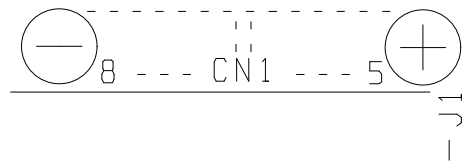
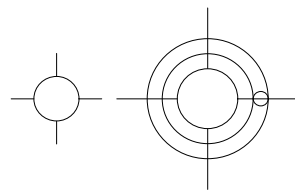
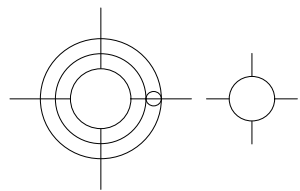
AE-DC-POWER-JACK-DIP

剖面



AE-DC-POWER-JACK-DIP





部品面シルク