



Features

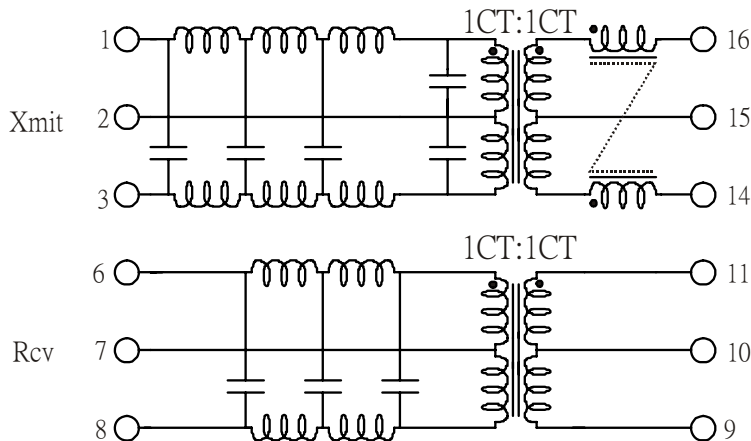
Through-hole Dil 16 pin Standard
 Integrated single isolation, impedance matching, single conditioning, EMI
 Filtering and noise suppression.

Electrical Specifications @25°C

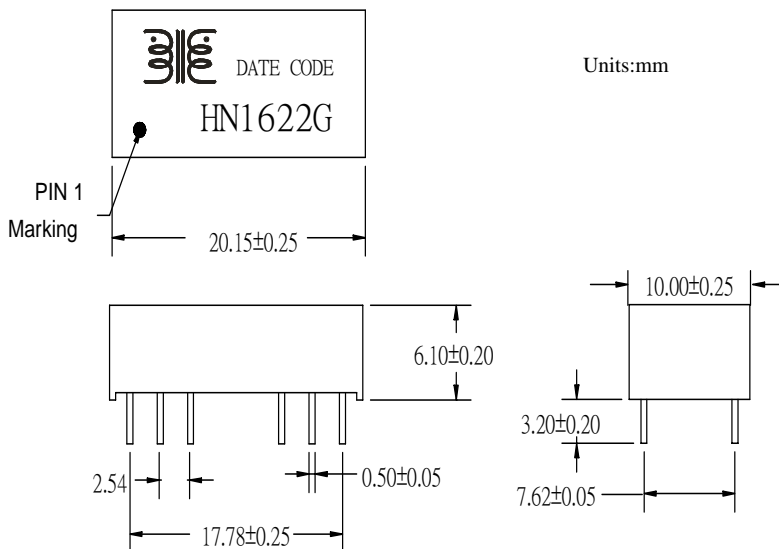
Parameter	T _X	R _X
Insertion loss(db)		
@1-10MHz	-1 db max	-1 db max
@30 MHz	-28 db min	-18 db min
Return loss(@5-10MHz)	-15 db min	-15 db min
Cut-off frequency	17 MHz typ	17 MHz typ
CMRR (@ 100MHz)	-30 db min	-30 db min
Cross talk(@1-30MHz)	-30 db min	-30 db min

Product Type : Green Product

SCHEMATIC



DIMENSION





HN1622G

SAMPLE TEST DATA

A. ELECTRICAL SPECIFICATIONS @25°C

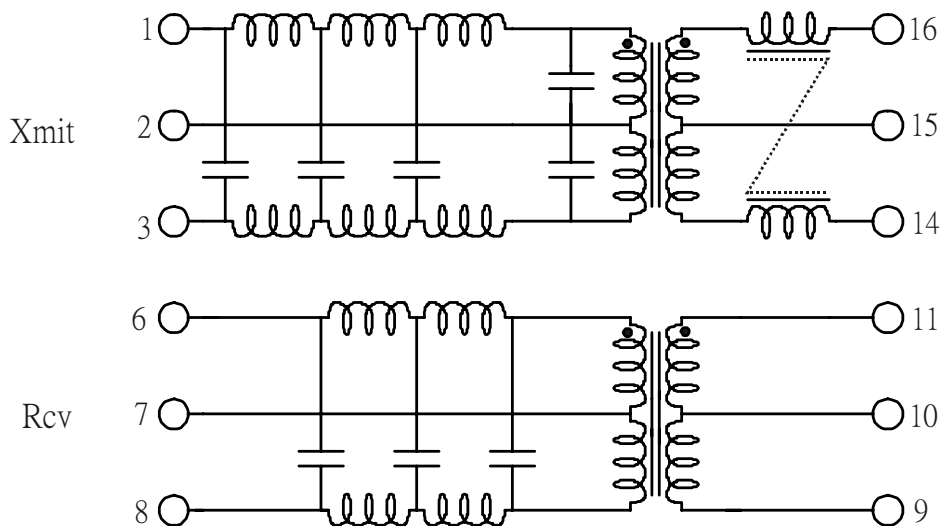
OCL:	140uH Min @ 100KHz,0.2V
Turn Ratio:	1CT:1CT(TX)/1CT:1CT(RX)±5%
Polarity:	1-16,6-11 In-Phase
Insertion Loss:	1-10MHz -1.0 dB max(TX/RX)
Attenuation:	30MHz -28dB Min(TX)/-18dB Min(RX)
Return Loss:	5-10MHz -15dB Min(TX/RX)
Cross Talk:	1-30MHz -30dB Min(TX TO RX)
Common Mode Rejection:	100MHz -30 dB Min(TX/RX)
Cut-off Frequency:	17MHz typ(TX/RX)

Isolation HI-POT: 1500VAC

Product Type: Green Product

B. SCHEMATIC:

HN1622G

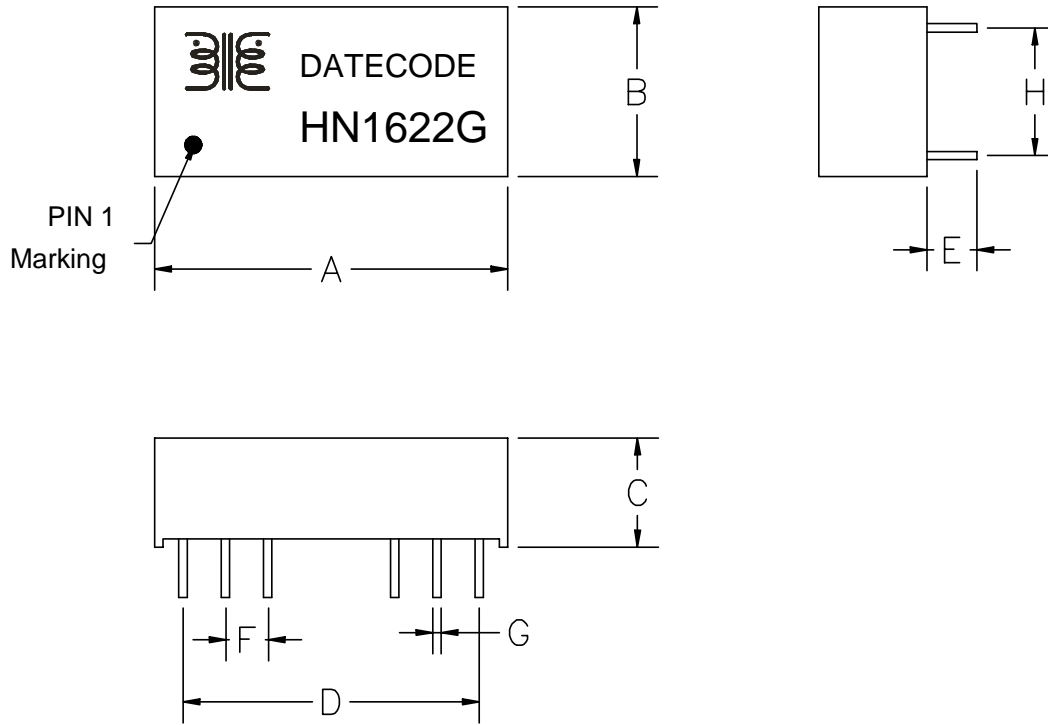




HN1622G

SAMPLE TEST DATA

C. DIMENSIONS & MARKING:



DIM	MILLIMETERS		INCHES	
	MIN	MAX	MIN	MAX
A	19.80	20.80	0.780	0.819
B	9.40	10.40	0.370	0.409
C	5.60	6.40	0.220	0.252
D	17.78(typical)		0.700(typical)	
E	3.00	3.60	0.118	0.142
F	2.54(typical)		0.100(typical)	
G	0.50(typical)		0.020(typical)	
H	7.62(typical)		0.300(typical)	



HN1622G

HN1622G SAMPLE TEST DATA

SPEC \ NO	1	2	3	4	5
Insertion Loss:					
-1.0dB Max(1-10MHz)					
TX:					
1MHz	0.36	0.35	0.31	0.30	0.32
5MHz	0.59	0.56	0.53	0.53	0.55
10MHz	0.78	0.78	0.71	0.74	0.74
RX:					
1MHz	0.33	0.34	0.43	0.32	0.29
5MHz	0.41	0.45	0.53	0.38	0.36
10MHz	0.54	0.62	0.70	0.58	0.56
Return Loss:					
-15dB Min(5-10MHz)					
TX:					
5MHz	19.8	21.4	19.8	20.6	20.5
10MHz	24.4	25.2	24.7	29.9	27.0
RX:					
5MHz	20.1	22.8	23.5	27.7	20.2
10MHz	27.2	22.6	21.9	21.2	23.4
Attenuation:					
TX:					
-28dB Min(30MHz)					
30MHz	36.6	36.2	34.7	39.1	36.7
RX:					
-18dB Min(30MHz)					
30MHz	26.5	27.5	28.4	28.4	28.0
Cross Talk:					
-30 dB Min (1-30MHz)					
5MHz	41.8	43.2	42.0	42.2	42.8
10MHz	38.7	41.4	39.6	40.3	39.8
20MHz	55.6	58.2	57.5	58.3	56.8
30MHz	59.7	61.8	62.6	62.2	57.9
MAIN TEST EQUIPMENT					
<input type="checkbox"/> YH-150 WITHSTANDING VOLTAGE TESTER					
<input type="checkbox"/> CHEN HWA 3252 AUTOMATIC TRANSFORMER TEST SYSTEM					
<input checked="" type="checkbox"/> RF NETWORK ANALYZERS 8712ET					



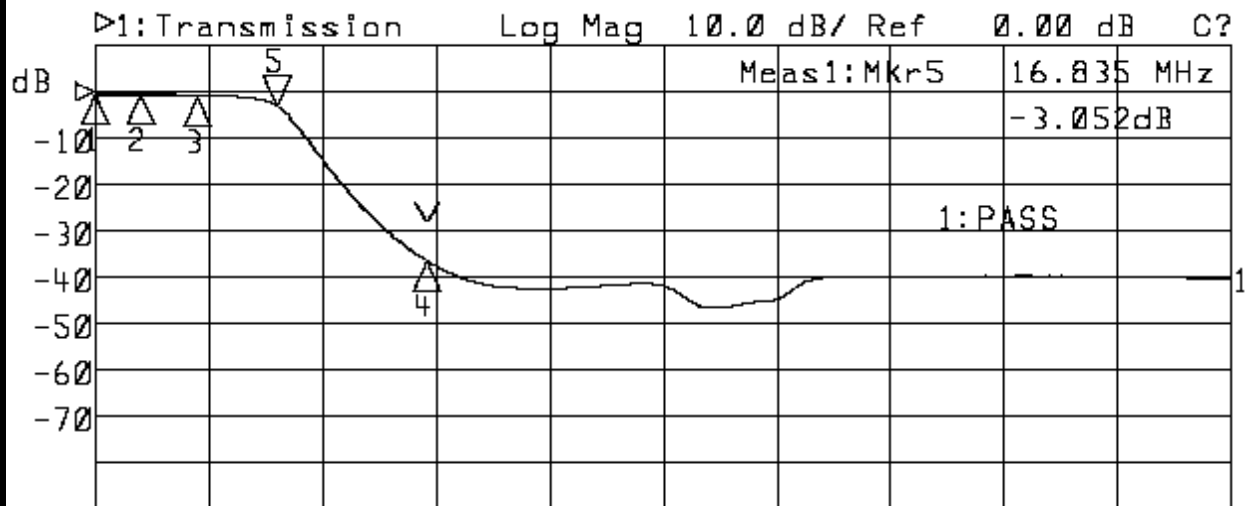
HN1622G

SAMPLE TEST DATA

P/N:HN1622G

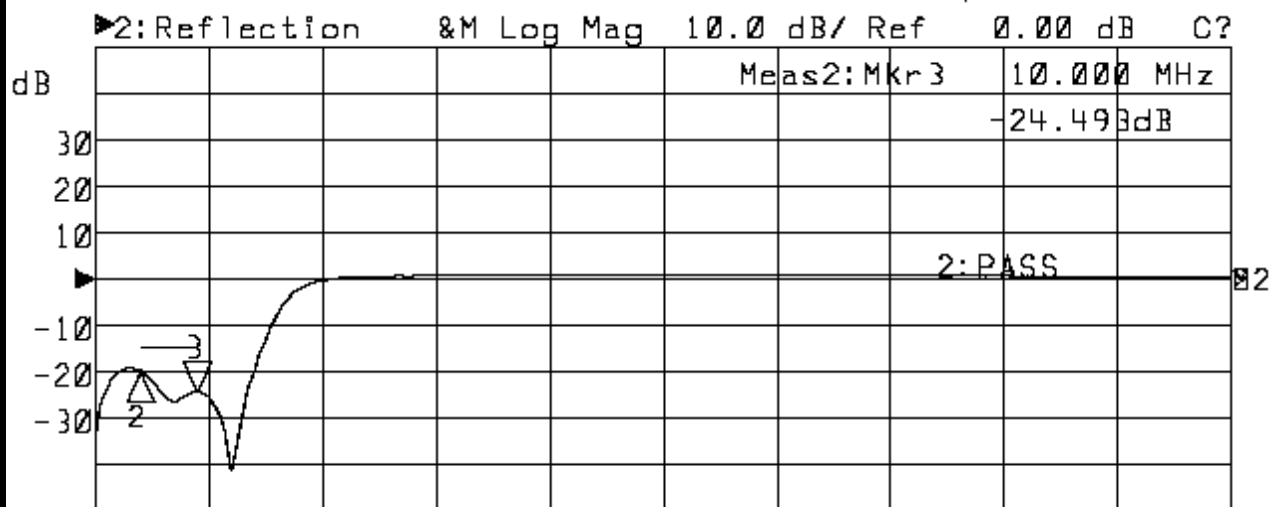
NO:01

Insertion Loss and Attenuation and Return Loss(TX):



Start 1.000 MHz

Stop 100.000 MHz



Start 1.000 MHz

Stop 100.000 MHz

1: Mkr (MHz)	dB	2: Mkr (MHz)	dB		
1:	1.0000	-0.361			
2:	5.0000	-0.592	2:	5.0000	-19.872
3:	10.0000	-0.784	3>	10.0000	-24.493
4:	30.0000	-36.607			
5>	16.8350	-3.052			



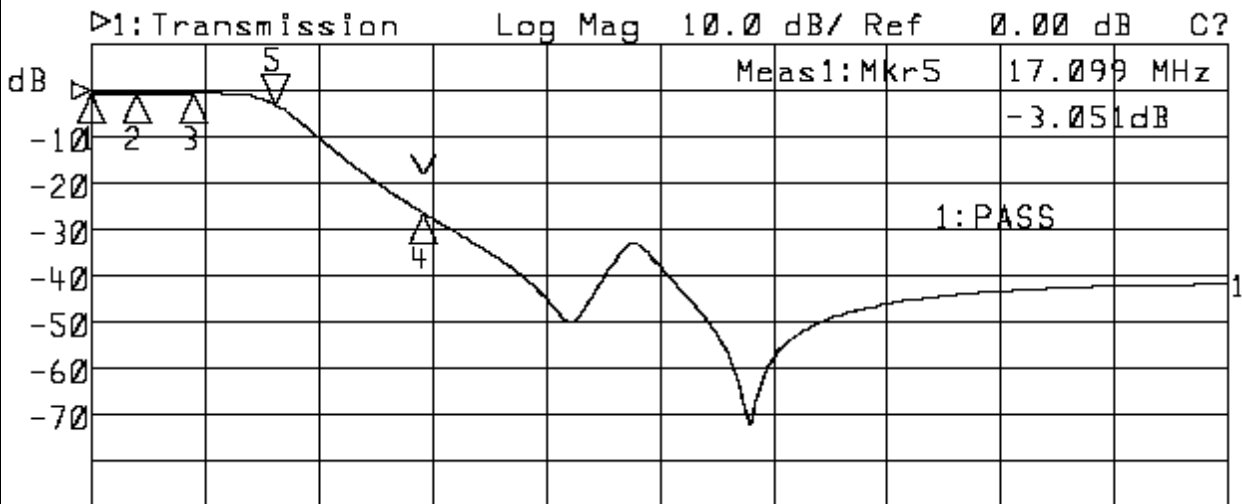
HN1622G

SAMPLE TEST DATA

P/N:HN1622G

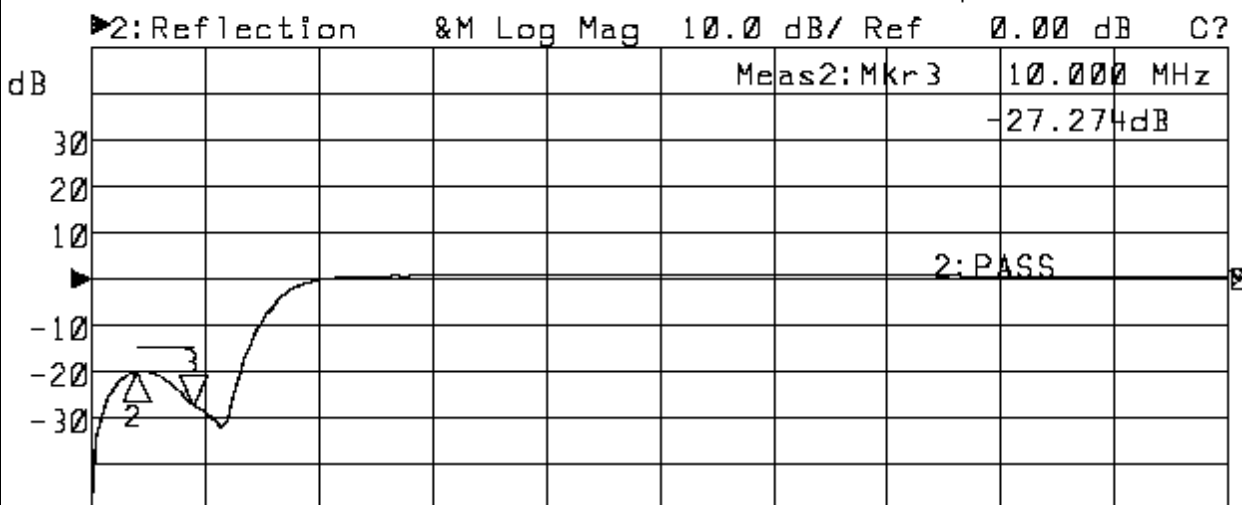
NO:01

Insertion Loss and Attenuation and Return Loss(RX):



Start 1.000 MHz

Stop 100.000 MHz



Start 1.000 MHz

Stop 100.000 MHz

1: Mkr (MHz)	dB	2: Mkr (MHz)	dB		
1:	1.0000	-0.332			
2:	5.0000	-0.412	2:	5.0000	-20.127
3:	10.0000	-0.542	3:	10.0000	-27.274
4:	30.0000	-26.529			
5:	17.0990	-3.051			



HN1622G

SAMPLE TEST DATA

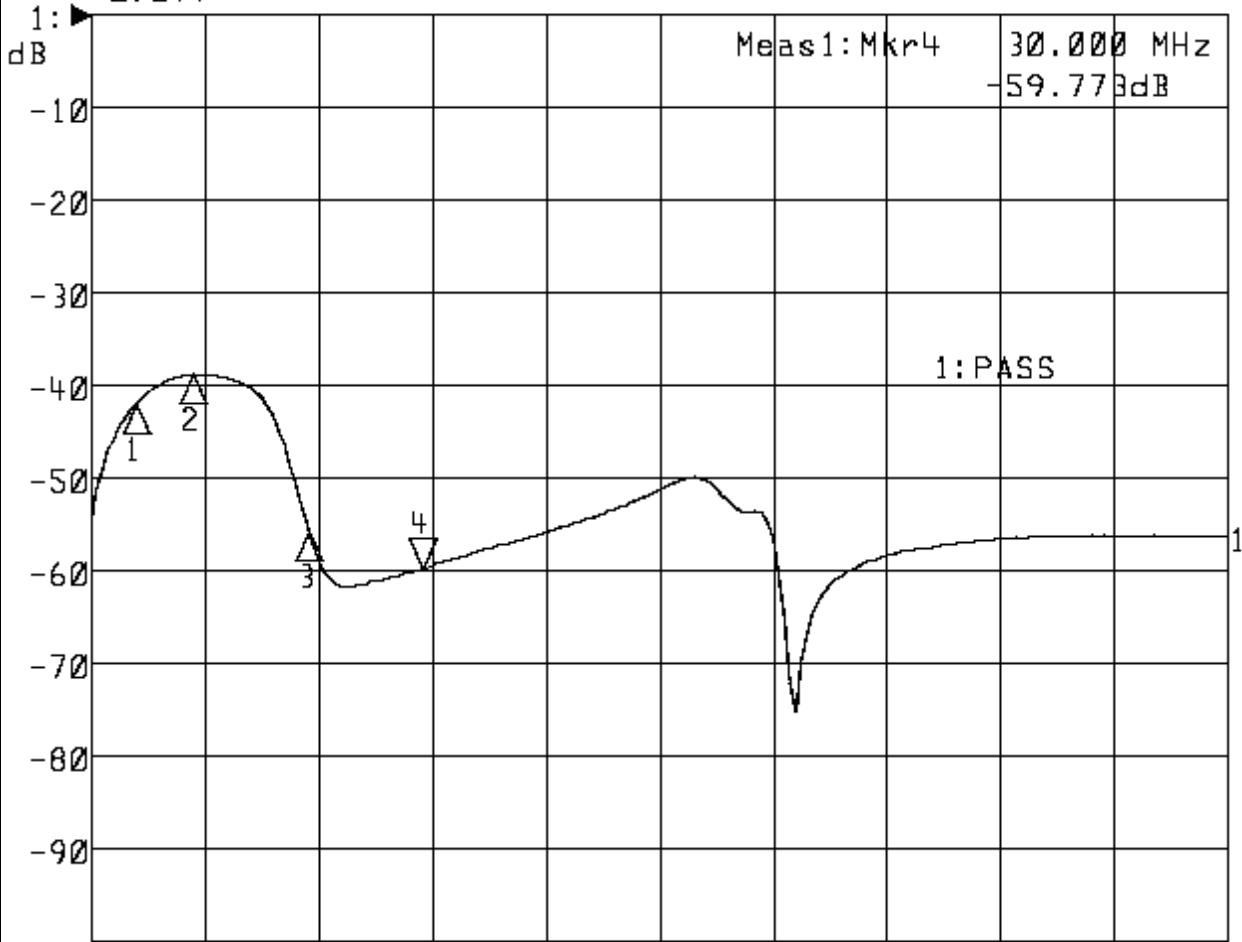
P/N:HN1622G

NO:01

Cross Talk:

►1:Transmission Log Mag 10.0 dB/ Ref 0.00 dB C?

►2:Off



1: Mkr (MHz)	dB	2: Mkr (MHz)	dB
1:	5.0000	-41.878	
2:	10.0000	-38.799	
3:	20.0000	-55.645	
4>	30.0000	-59.773	