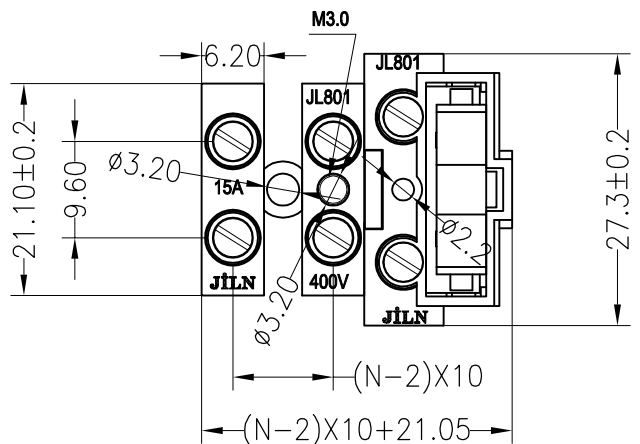


**SPECIFICATIONS**

Rated(额定参数): 400V,15A  
 Dielectric strength(抗电强度): AC2000V/1 Minute  
 Insulation Resistance(绝缘电阻):1000MΩ Min  
 Contact Resistance(接触电阻):20mΩ Max  
 Screw Torque(扭矩): 0.5Nm (4.5Lb.in)  
 Wire Range(线径):14~22AWG  
 Strip length(剥线长度):6~7mm  
 Temp. range(操作温度): -40℃~+105℃  
 MAX Soldering(瞬时温度):+250℃,5s

Housing Material(塑件): PA66 (UL94 V-0)  
 Contact(端子): Brass, Ni plating(黄铜镀镍)  
 Screw (螺丝): M3.0, Steel, Zinc plating(钢,镀锌)



**Ordering Information**

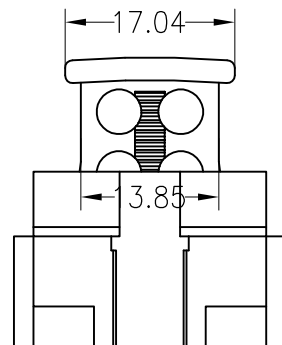
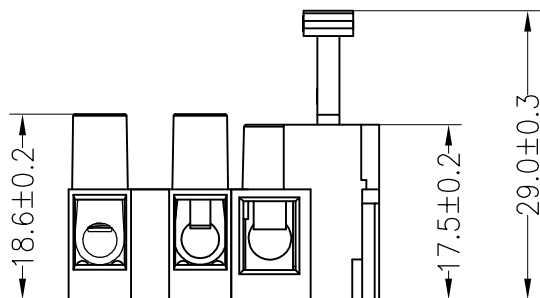
**JL801 - 100 XX E X 1**

Pitch  
100=10.0PH

No.of pins  
1P,2P,3P  
4P,5P

Housing Color  
B=Black  
G=Green  
U=Blue  
R=Red  
W=White  
Y=Yellow  
O=Orange  
E=Grey

Packing  
O=Pe bag  
T=Tube  
A=Tray



				OPERATION		DRAW	Yiyusheng	18.12.03	SCALE	FIT	<b>JILN</b> ® 深圳市锦凌电子有限公司 SHENZHEN JINLING ELECTRONIC CO.,LTD Tel: 86-755-2997-5806/5802 Fax: 86-755-2997-5992	
				X.X	±0.30				UNIT	mm		
				X.XX	±0.20	CHECK		SIZE	A4	PART NO. JL801-100XXEX1		
				X.XXX	±0.10		SHEET	1/1				
A0	2018.12.03	NEW DRAWING		Angle	±3°	APPROVE		PROJ.		TITLE: 10.0mm Feed THROUGH Terminal Blocks		
REV	DATE	MODIFICATION DESCRIPTION		DIM	TOL							