

CRYSTAL SPECIFICATION

- 1. Description : Quartz Crystal
 - 2. Nominal Frequency : 16.000000 MHz
 - 3. Center Frequency : 16.000000 MHz
 - 4. Dimension & Drawing No. : LP-4.2S.2S ; SXD-00202
 - 5. Oscillation Mode : Fundamental
 - 6. Cutting Mode : AT cut
 - 7. Packing Style : TP-068
 - 8. Measurement Instrument : Measured in S&A 350A
 - 9. Electrical Characteristics :
- [1] Operating Conditions :

Item	Symbol	MIN.	TYP.	MAX.	Unit	Condition
Operating Temperature Range	Topt	-10		60		
Storage Temperature Range	Tstg	-40		90		
Load Capacitance	CL		18		pF	
Drive Level	DL			300	μW	

[2] Frequency Stability :

Item	Symbol	MIN.	TYP.	MAX.	Unit	Condition
Tolerance	dF/Fo	-30		30	ppm	Refer to Center Frequency @25±3
Stability Over Temperature	dF/F25	-30		30	ppm	Refer to Operating Temperature
Aging	dF/F25	-5		5	ppm	Per Year

dF/Fo: Frequency Deviation Refer to Center Frequency

dF/F25: Frequency Deviation Refer to 25 Frequency

[3] Electrical Performance :

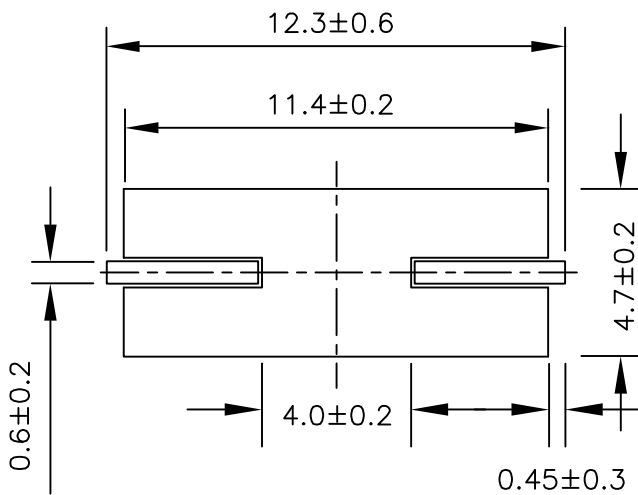
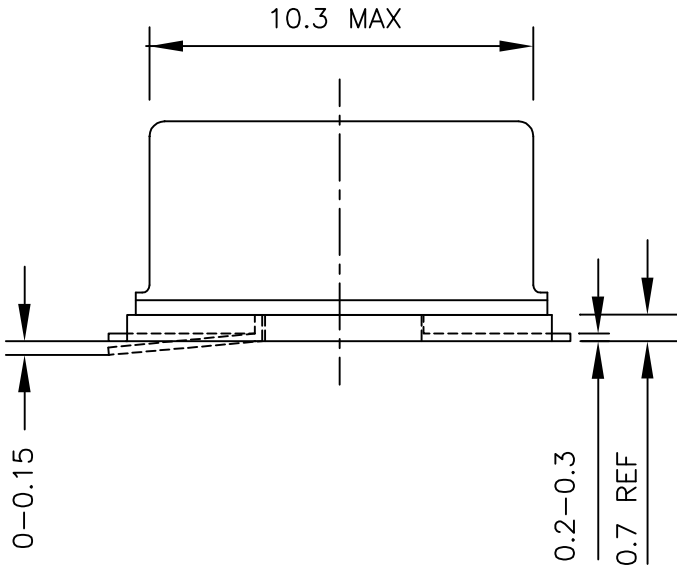
Item	Symbol	MIN.	TYP.	MAX.	Unit	Condition
Equivalent Series Resistance	ESR			50	Ω	@Series
Shunt Capacitance	C0			7	pF	
Insulation Resistance	IR	500			M Ω	@DC 100 Volt

10. Marking : Laser or Ink

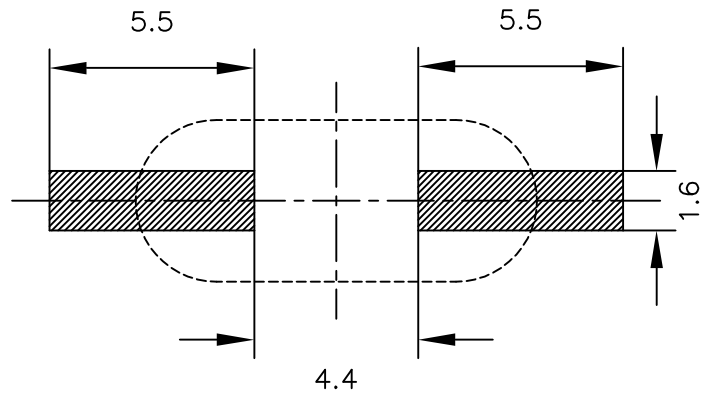
	<p>TOP VIEW:</p> <div style="border: 1px solid black; width: 80px; margin: 0 auto; padding: 5px;"> <p>16.0000S</p> </div>
--	---

11. Remark :

*Lead Free, RoHS compliant



LAND PATTERN (REFERENCE)



6	MODIFY PIN : 0-0.3 -> 0-0.15 (101K1102-007)	'11.03.21	DRAWING NAME	LP-4.2S.2S(SMD) (XTL25)		
5	MODIFY HEIGHT 4.2 ^{+0.0} / _{-0.3} -> 4.2 ^{+0.0} / _{-0.5}	'06.01.24	DRAWING NO.	SXD-00202		
4	MODIFY LEAD (101A0410-013)	'04.10.19	SCALE		UNIT	mm
NO.	MODIFY CONTENTS	DATE	APPROVE	Jason	DESIGNER	John