



JAPAN RADIO TEST REPORT

Applicant : Kiwi Technology Inc.
Address : 4F., No.158, Sec. 1, Wenxing Rd., Zhubei City,
Hsinchu County 302, Taiwan (R.O.C.)
Equipment : LoRa Module
Model No. : TLM922S-P01A
Trade Name : Kiwi Technology
Output Power : 920.6MHz~923.4MHz: 19.23 mW
922.4MHz~928MHz: 19.32 mW

I HEREBY CERTIFY THAT :

The sample was received on Sep. 10, 2016 and the testing was carried out on Sep. 10, 2016 at CerpPASS Technology Corp. The test result refers exclusively to the test presented test model / sample. Without written approval of CerpPASS Technology Corp., the test report shall not be reproduced except in full.

Approval by:

Mark Liao / Assistant Manager
Date: Aug. 30, 2018

Test Engineer:

Spree Yei / Engineer
Date: Aug. 30, 2018

Prepared by:

Delia Feng / Specialist
Date: Aug. 30, 2018

Laboratory Accreditation:

CerpPASS Technology Corporation Test Laboratory





Contents

1. Description of Antenna	4
2. EUT Photos	5



1. Description of Antenna

Antenna Type	Antenna Model	Antenna Gain
Dipole	3GD-D05	2dBi
	3GD-D06	
	3GD-D07	
	*RFA-WAVE-C55-U-B70-1	
PCB	AJA0011-150-IPX	1dBi
	AJA0001-115-IPX	2dBi
	* AJA0009-200-IPX	
	* XBY2018070	
	* 1052620001	1.4dBi
Dipole	6602403081	0.67dBi
Dipole	6602404001	0dBi

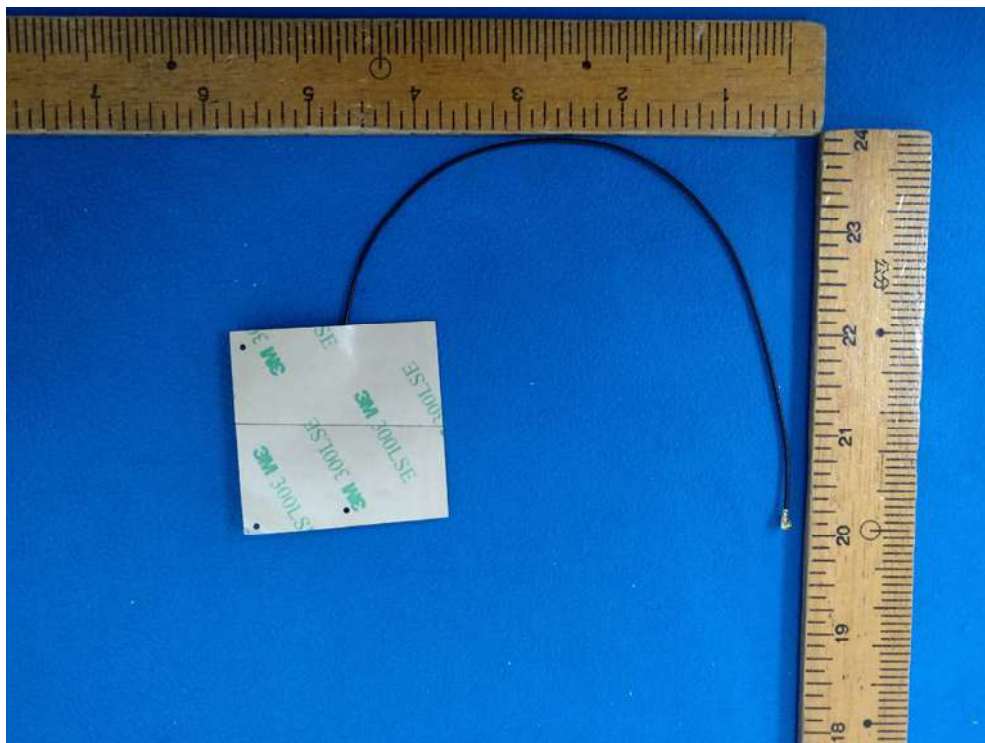
*additional antenna

This test report is for additional antenna with same or lower gain of the original antenna, this won't affect the results in the original test report, and no further evaluation is required.



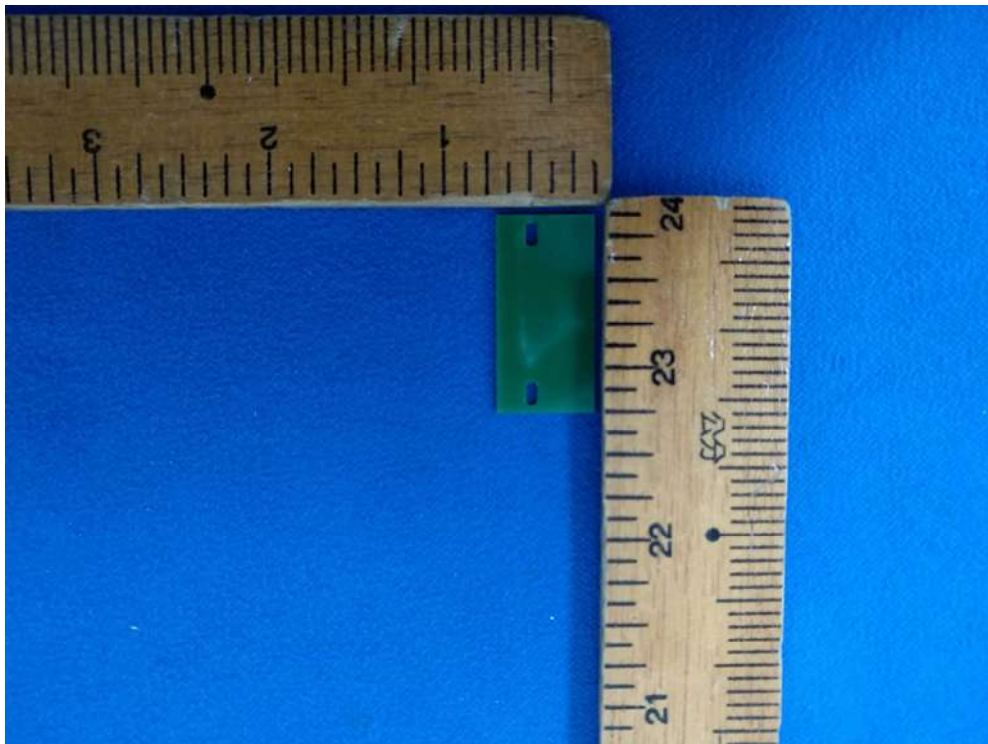
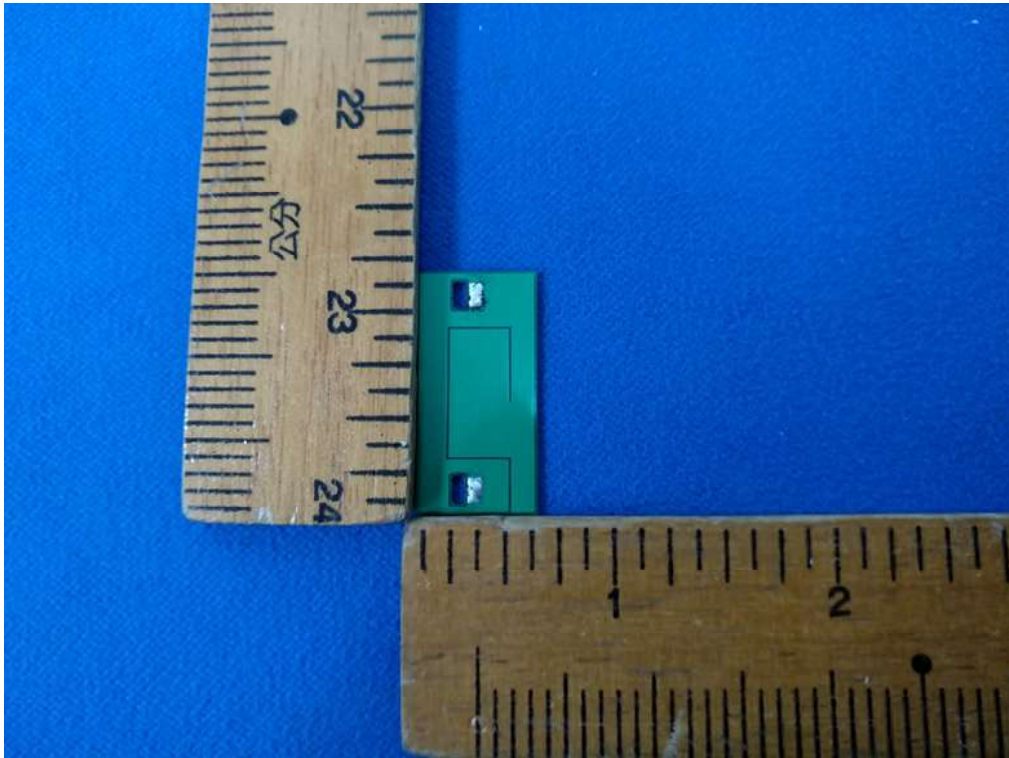
2. EUT Photos

Antenna Model No.: AJA0009-200-IPX



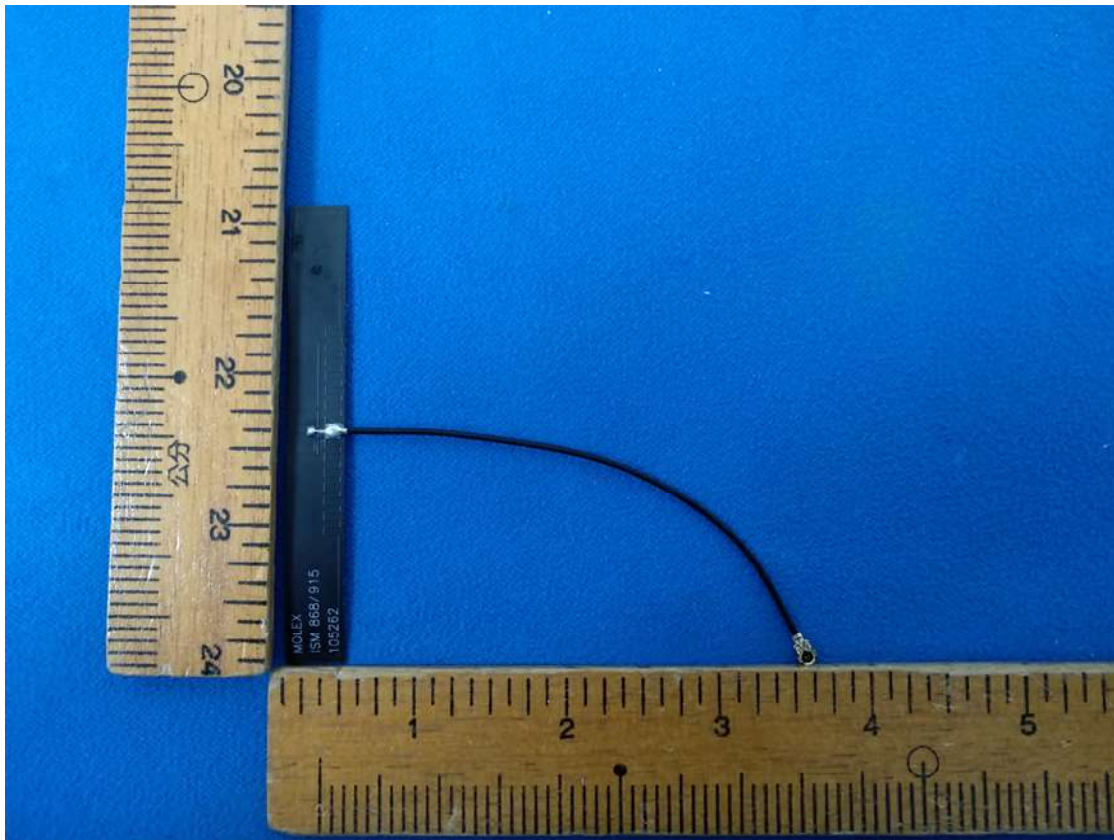


Antenna Model: XBY2018070





Antenna Model: 1052620001





Antenna Model: RFA-WAVE-C55-U-B70-1



