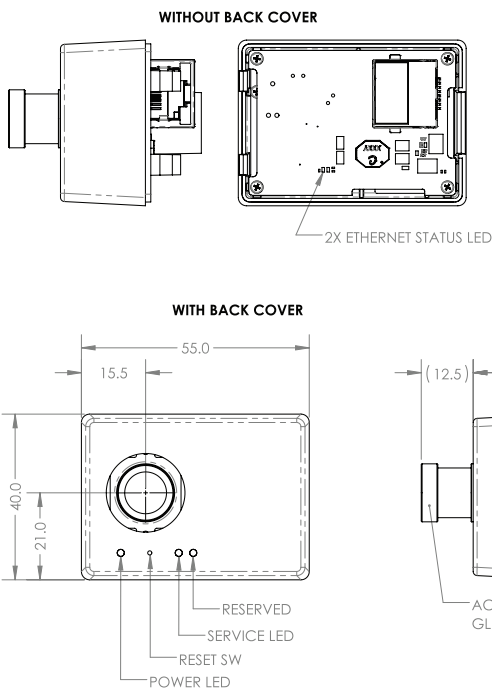
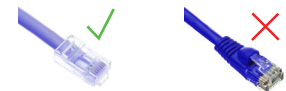


SENSAiZ PoE AI Sensor IMX500 12.3MP (P/N: SZP1235-001)



Sensor Properties	
Sensor Model	Sony IMX500 Color CMOS
Shutter Type	Rolling shutter
Sensor Size	1/2.3" (Diag 7.857mm)
Resolution	12.33 MP, 4056 x 3040px
Pixel Size	1.55 µm
Controller Properties	
Controller Module	ESP32-WROVER-E
Processor	Two low-power Xtensa® 32-bit LX6 microprocessors
RAM	520KB on-chip SRAM, 8MB PSRAM
Storage	16MB SPI flash
Physical Properties	
Dimensions	55 x 40 x 35 (excludes lens protrusion)
Lens Mount	S-Mount
Weight	48 g
Focal length	4.35mm
Focus Type	Fixed Focus (Focused at 3m*) *Performance varies depending on application.
Field of View (DxHxV)	85.5° x 71.6° x 56.8°
Aperture	F3.0
TV Distortion	<0.58%
Interface and Power Information	
Digital Interface	100BASE-T RJ45, PoE
Power Requirement	PoE (IEEE 802.3af)
Power Consumption	1.6W (typ), 3W (max) via PoE
Standard and Certifications	
Compliance	CE, FCC, ISED, MIC, RoHS, REACH, WEEE
Storage Temperature	-30° to 60°C
Operating Temperature	0° to 40°C ambient
Humidity	Operating: 20% ~ 80%, relative, non-condensing

Important!
Because of space limitations, molded connector is not support. Use only bootless connector.



(Drawings continued on next page)

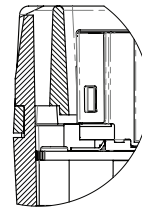
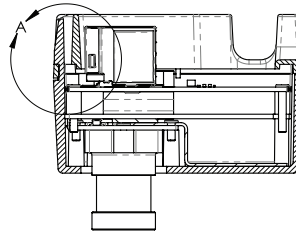
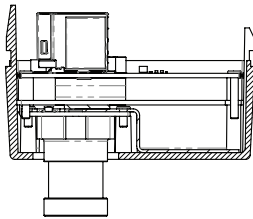
SENSEiZ

SENSEiZ PoE AI Sensor IMX500 12.3MP (P/N: SZP1235-001)

BACK COVER REMOVED

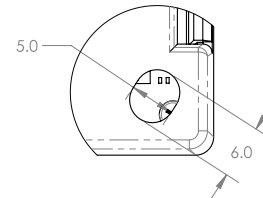
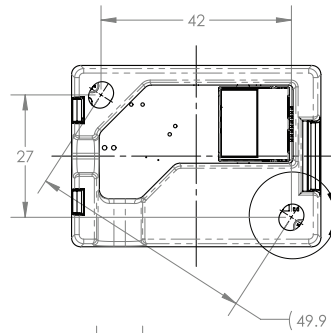


BACK COVER SNAPPED IN



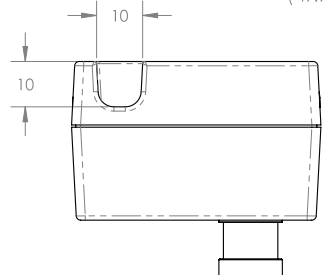
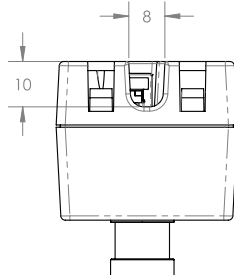
DETAIL A
SCALE 2 : 1

MOUNTING HOLES



DETAIL B
SCALE 2 : 1

CABLE ACCESS RECESS



INSTALLATION WITH #8 SCREW

