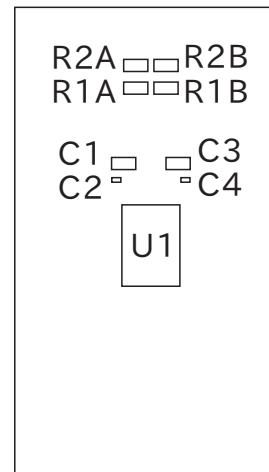
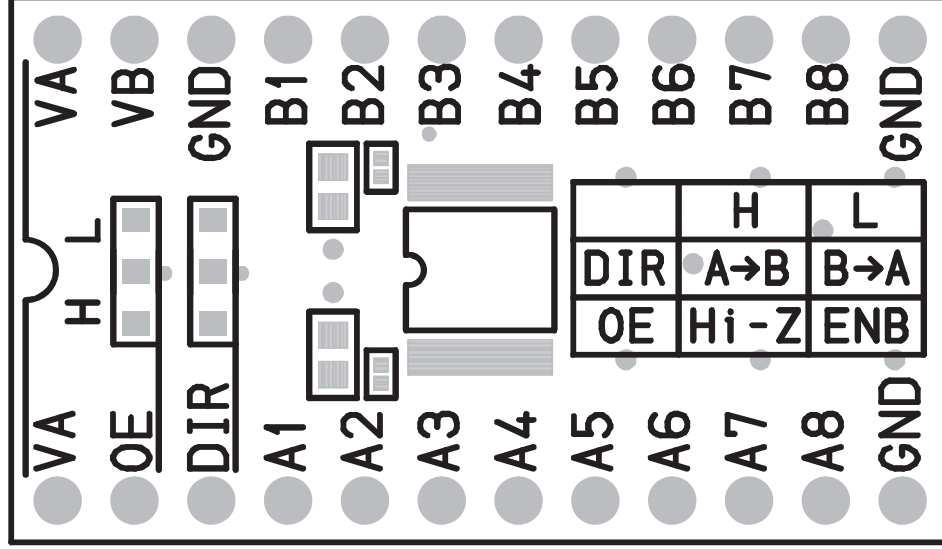


穴加工図

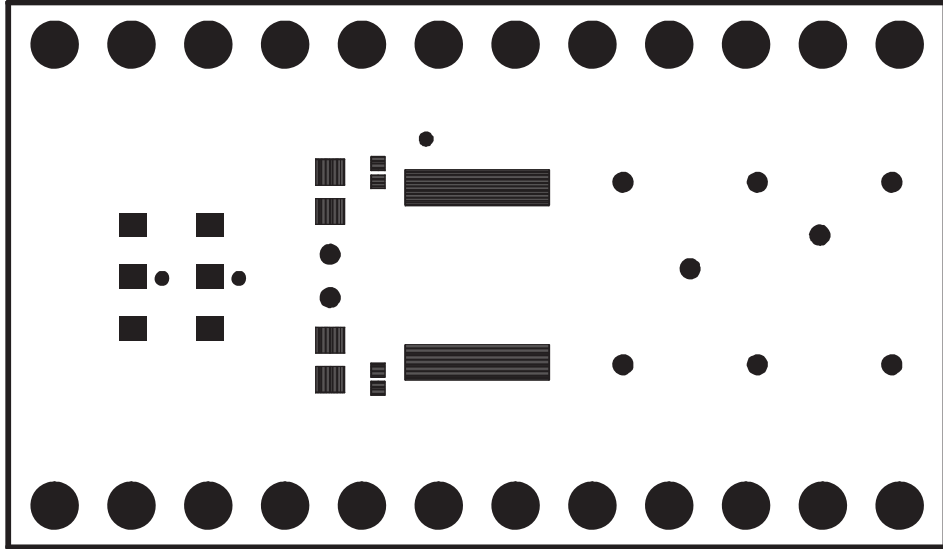
| form | diameter | number |      |
|------|----------|--------|------|
| a    | 0.300    | 3      | メッキ有 |
| b    | 0.500    | 10     | メッキ有 |
| c    | 0.800    | 24     | メッキ有 |

### 部品配置図

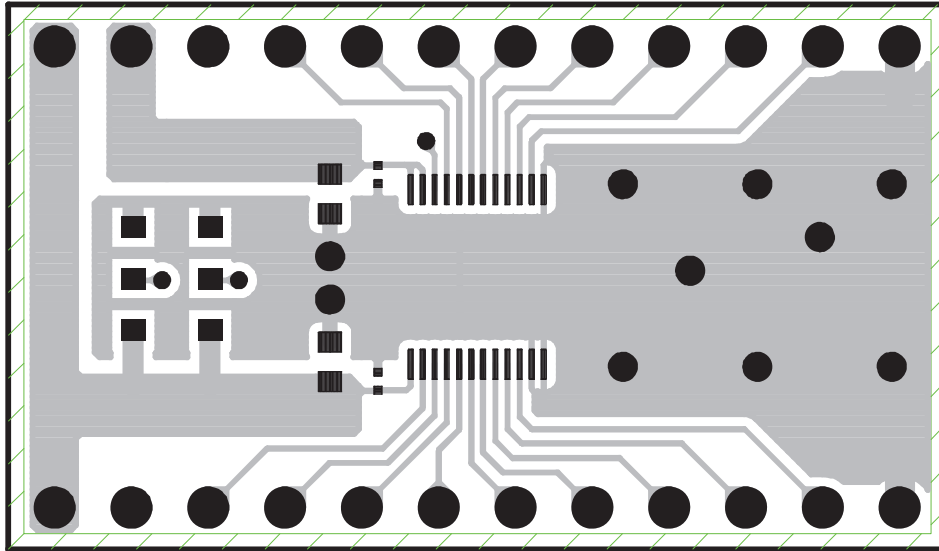




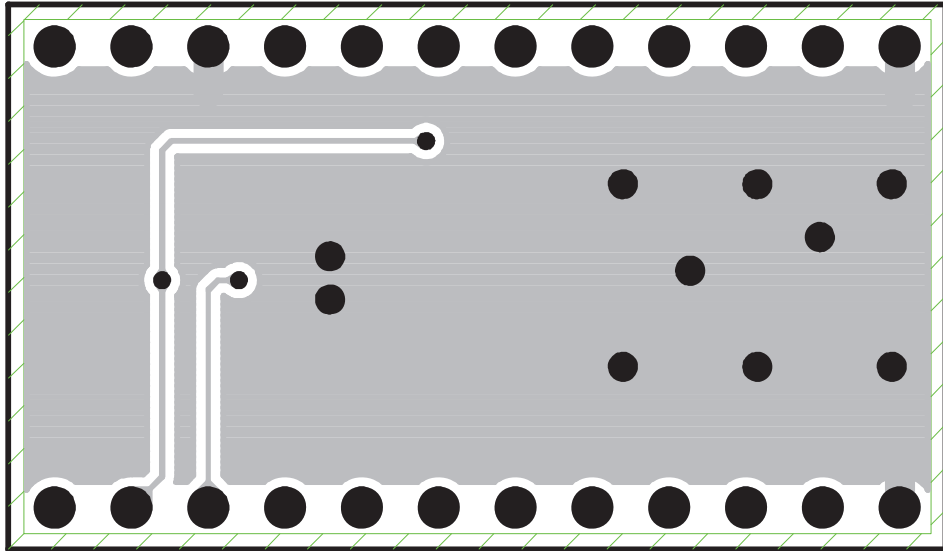
部品面シルク 部品面レジスト



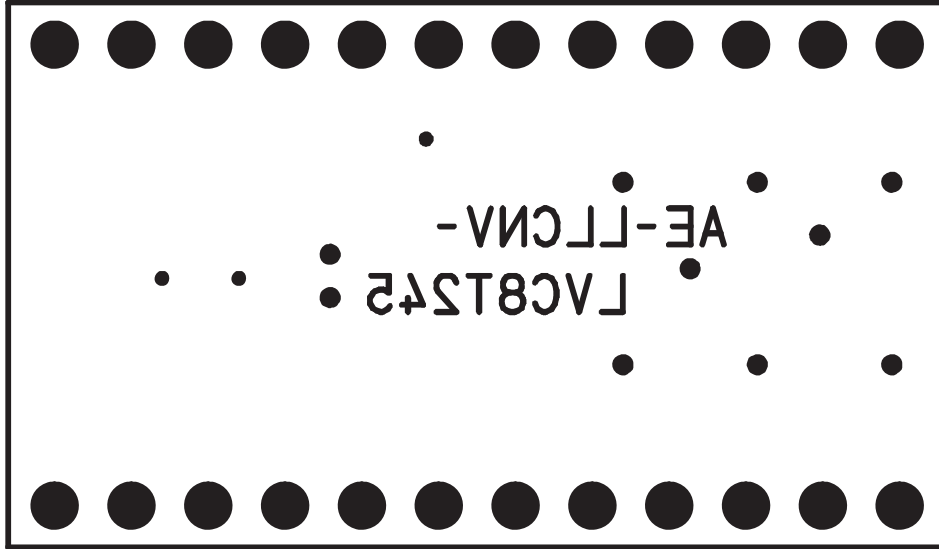
部品面レジスト



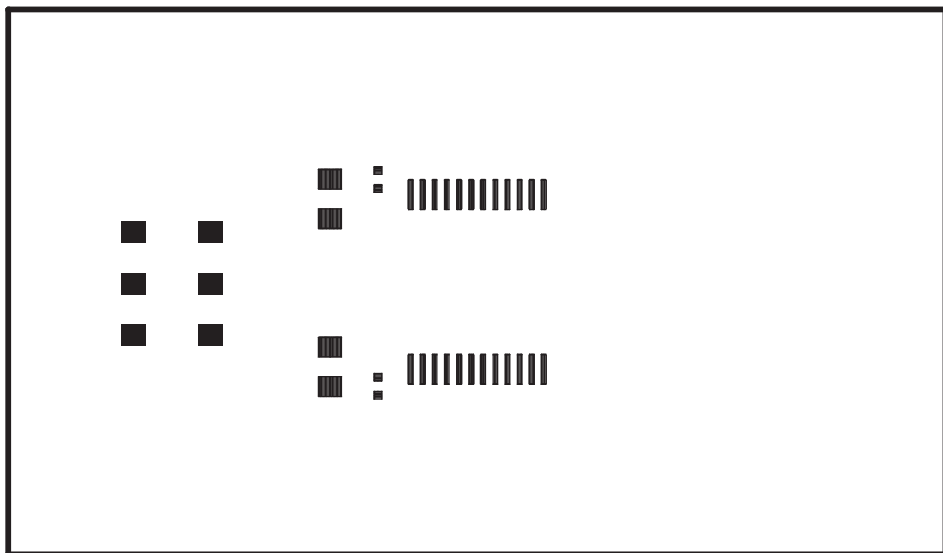
TOP (部品面パターン)



BOT (半田面パターン)



半田面レジスト



部品面メタル