

SC133

Micro Type Load Cell

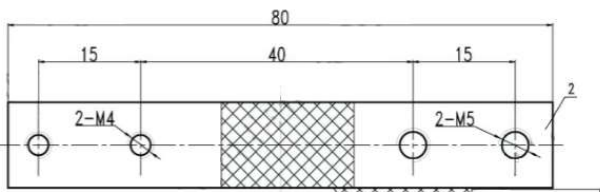
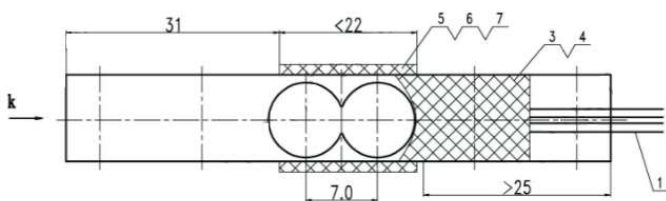
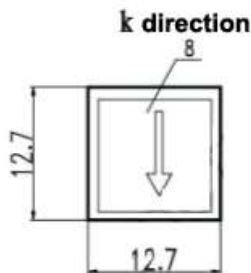


Apply to: Kitchen scale, vending machine, smart shelf, Robot, Coffee machine, dealing machine, Other force measuring device.

Specification:

Capacity	3KG
Rated output	1.0 ±0.15 mv/v
Accuracy	0.05 %F·S
Comprehensive Error	0.05 %F·S
Creep	±0.05 %F·S/3min
Non-linearity	±0.05 %F·S
hysteresis error	±0.05 %F·S
Repeatability	±0.05 %F·S
Zero output	±0.1mv/V
Temp. effect on sensitivity	0.05% F·S/10°C
Temp. effect on zero	0.2%F·S/10°C
Input resistance	1000 ± 10 Ω
Output resistance	1000 ±10 Ω
Insulation resistance	≥ 2000 MΩ
Temp. range	-10+40°C
Excitation voltage	3~10 VDC
Safe overload	150 %F·S
Four corner error	±0.1%F·S
Load cell material	Aluminum alloy
Connecting cable	Φ0.8x220mm
Unit weight	32 g/unit
Package	500 units / carton

Size : 80x12.7x12.7 mm



Wiring:

