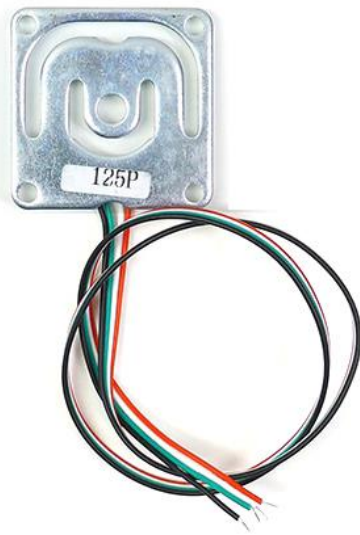
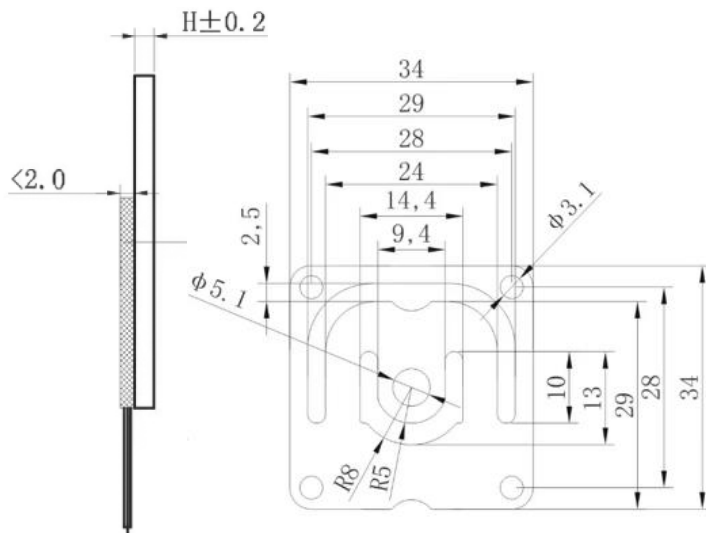


SC134

Full Bridge Micro Load Cell



Size: 34x34xH mm



Specification:

Rated capacity	10kg
Accuracy	0.05 % F.S.
Zero balance	±0.6mv/V
Output sensitivity	Refer to table
linearity	0.05% F.S.
Repeatability	0.05% F.S.
Hysteresis error	0.05% F.S.
Creep	0.05% F.S /3min
Temp. effect on span	±0.05% F.S. /10°C
Temp. effect on zero	±0.05% F.S. /10°C
Input resistance	1000±10Ω
Output resistance	1000±10Ω
Insulation resistance	≥5000MΩ (50VDC)
Excitation voltage	3~10VDC
Operating temp. range	-5~+40°C Humidity ≤65%RH
Defend grade	IP65
Connecting cable	Φ8x200mm
Unit weight	12g /unit
Material	Manganese steel
Ultimate overload	150% F.S.

Capacity	H	Output - mv/v
5kg	1.0mm	1.2±10%
10kg	1.5mm	1.0±10%
20kg	1.5mm	2.0±10%
30kg	2.0mm	1.6±10%
50kg	2.5mm	1.8±10%
75kg	3.0mm	2.0±10%
100kg	3.0mm	2.5±10%
150kg	4.0mm	2.0±10%
200kg	4.0mm	2.7±10%
300kg	4.0mm	/

Wiring:

