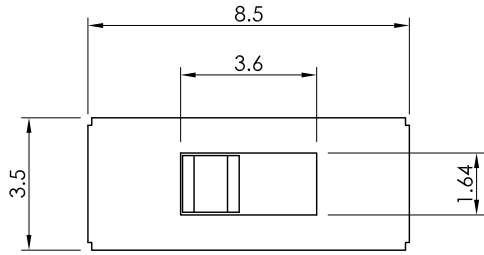
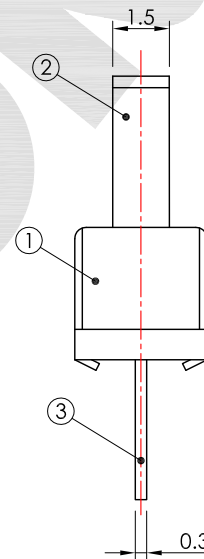
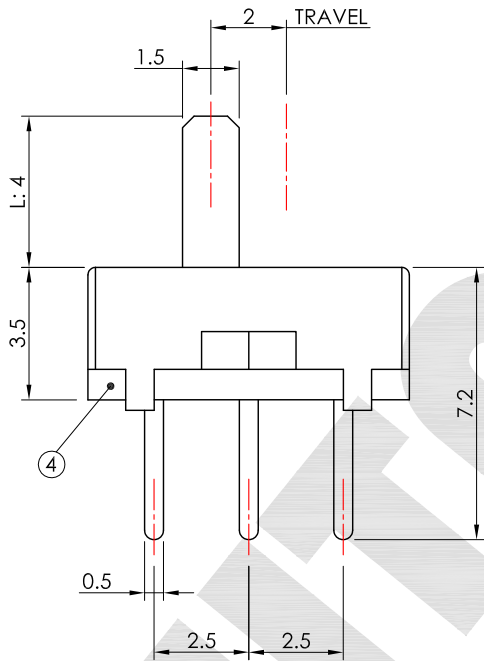
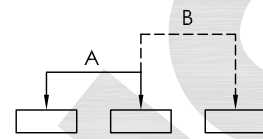


本圖面若與目錄之規格尺寸不符，以本圖面規格尺寸為主。
Below is our main specification if different from catalog.

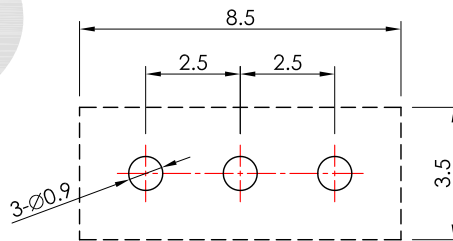
RoHS compliant



SCHEMATIC



P.C.B LAYOUT



RoHS compliant

SS12D01GX-G

OPTIONAL KNOB SIZE (L)

2-6

SPECIFICATION

- Rating:** 0.3A 50V DC.
- Contact resistance:** 30mΩ Max. (initial)
- Insulation resistance:** 100MΩ at 500V DC.
- Withstand voltage:** 500V AC for 1 minute.
- Swithing life:** 10,000 Cycles Min.
- Operating force:** 200±100g.
- Minimum load:** 30mA 10V DC. (reference only)
- Soldering temperature:** 230°C Max for 2±0.5 Sec.
- Soldering time:** 1 time only.
- Note:** Not washable, don't immerse into epoxy and organic solvent.

MATERIAL

- Frame:** SPCC, Ni plated. ①
- Knob:** POM. ②
- Terminal:** Brass, Ag plated. ③
- Terminal base:** Phenolic resin, natural. ④
- Contact:** PBS, Ag plated. ⑤



V2.2	△		
V2.1	無	改 版	2009.08.26
V2.0	無	新繪製	2004.11.03
版本 VER.	符號 SYMBOL	修 改 內 容 ALTERATION	更 新 日 期 DATE

產品 PRODUCT		Slide Switch		型號 MODEL NO.		SS12D01G4-G	
比例 SCALE	5 : 1	單位 UNIT	mm				
公差 TOLERANCE	.X=±0.3mm, .XX=±0.2mm						
製圖 DRAWN BY	核圖 CHECKED BY	主管 APPROVED BY					
Ian Chiu	Alex Lin	Margaret Lee					



一綺電子企業股份有限公司

總公司：110 台北市信義路四段415號13樓之3
13F-3, NO.415, SEC.4, HSIN YI ROAD, TAIPEI, TAIWAN
TEL : 886-2-27290229(Rep.) FAX : 886-2-27582086
URL : www.switronic.com E-MAIL : switches@ms36.hinet.net