

[參考資料]

SY-M2W

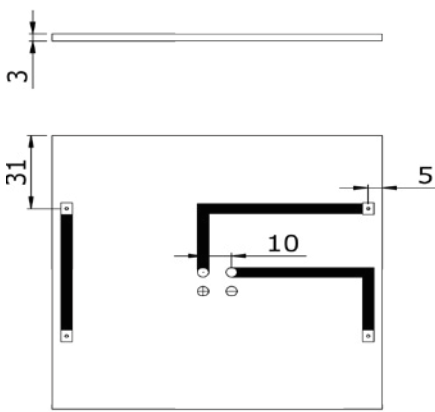
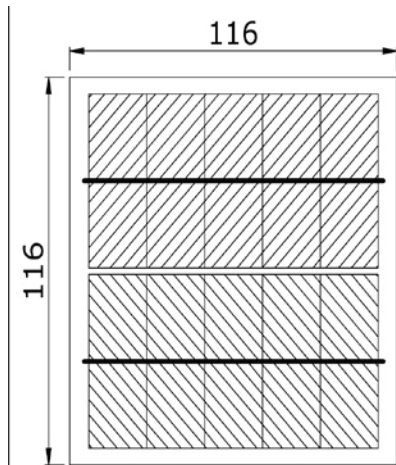
High Efficiency, High Quality PV Module

Electrical Characteristics	SY-M02W
Maximum power (Pmax)	2W
Voltage at Pmax (Vmp)	5.9V
Current at Pmax (Imp)	0.34A
Open-circuit voltage (Voc)	6.9V
Short-circuit current (Isc)	0.39A
Temperature coefficient of Voc	-(0.40 ± 0.05)%/ °C
Temperature coefficient of Isc	(0.065 ± 0.01)% / °C
Temperature coefficient of power	-(0.5±0.05)%/ °C
NOCT (Air 20°C; Sun 0.8kW/m² wind 1m/s)	47±2°C
Operating temperature	-40°C to 85°C
Maximum system voltage	30 VDC
Power tolerance	+ 3%
Cells	multicrystalline silicon solar cell
No. of cells and connections	12(2X6)
Module Dimension	116mm[4.57in.]x116mm[4.57in.]x3mm[0.12in.]
Weight	65g[0.14lbs]

* STC:Irradiance 1000W/m², AM1.5 spectrum, module temperature 25°C

* Specifications are subject to change without notice at any time.

Module Diagram



Key Features:

- High module efficiency and stable power output
- Based on leading process technology
- Outstanding electrical performance under high temperature conditions or low irradiance conditions
- Easy of installation and all-weather applications
- 1 years product warranty(materials and workmanship)
- 1 years module power output warranty
- Peak power of single module is guaranteed in +3% power tolerance
- Strong framed module, passing loaded test of 5400 Pa (IEC61215 2nd)
- The manufacture is certified for ISO 9001:2008

Applications

- Off grid residential roof-tops
- Off grid commercial/industrial roof-tops
- Rural area applications
- Solar power system
- Other off-grid applications

SUNYO®

SUNYOOO Solar Technology

Address: Youyi Village, Luoyang Town, Wujin District, Changzhou, Jiangsu, P.R.China

Tel: 86-519-88790861

86-519-88791962

Fax: 86-519-88792861

E-mail: info@sunyooo.com

Website: www.sunyooo.com