

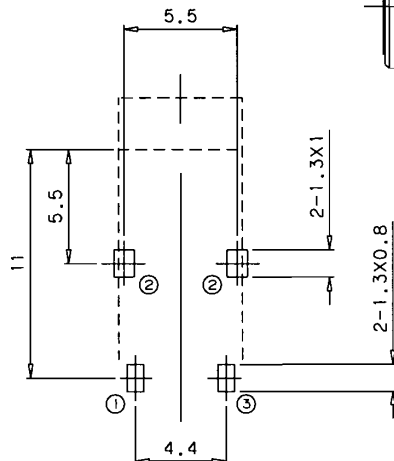
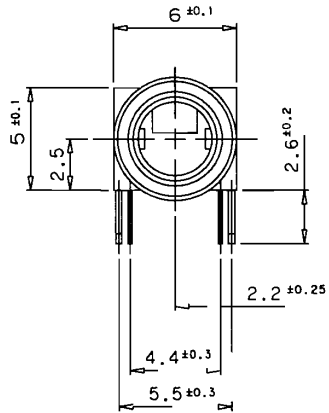
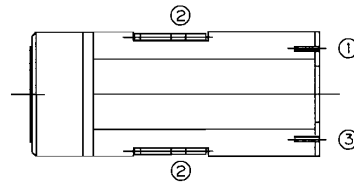
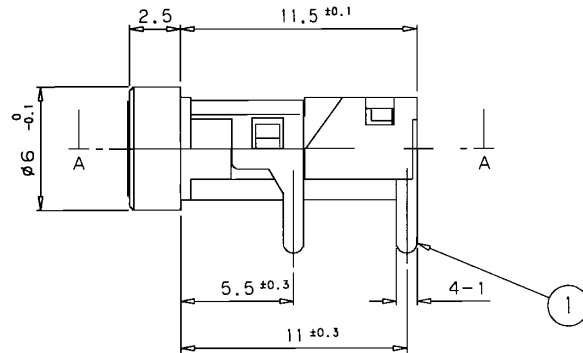
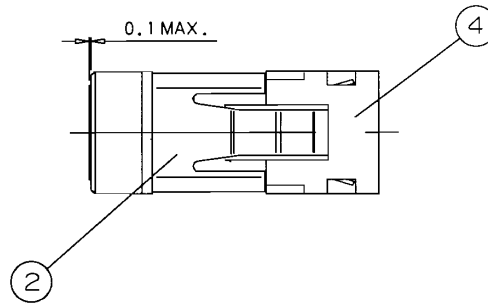
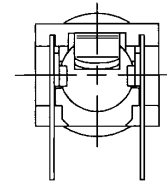
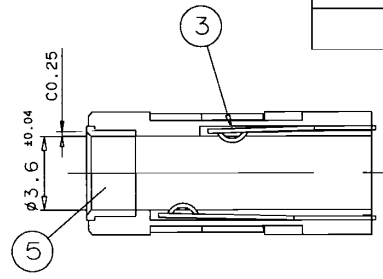
REVISION

LTR	DESCRIPTION	DATE	APPROVED

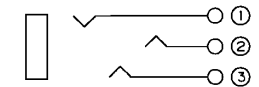
SPECIFICATION

1. DIELECTRIC STRENGTH: 500V AC FOR ONE MINUTE.
2. CONTACT RESISTANCE: 50mΩ MAX
3. INSULATION RESISTANCE: 100MΩ MIN. AT 500V DC.

SECTION A-A


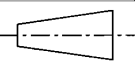


PC BOARD HOLE LAYOUT TOLS: ±0.1
VIEW FROM DIRECTION OF INSERTION TO PCB



CIRCUIT DIAGRAM

LET	PART NAME	QTY	MATERIAL	REMARK
5	RIM	1	BRASS	NI-PLATED
4	BODY	1	PBT GF30% RESIN UL94V-0	
3	RING SPRING	1	PBS 0.2t	Ag-PLATED
2	TIP SPRING	1	PBS 0.3t	Ag-PLATED
1	SLEEVE TERMINAL	1	PBS 0.2t	Ag-PLATED

<p>TOLERANCES</p> <p>X ≤ 5 = ± 0.10</p> <p>X > 5 = ± 0.20</p> <p>ANGULAR = ± ---</p> <p>DO NOT SCALE DWG.</p>	<p>PART NAME</p> <p>Ø3.5 EARPHONE JACK</p>	<p>DWG NO.</p> <p>MJ-8435</p>
	<p>MATL</p> <p>AS SHOWN IN TABLE</p>	<p>SCALE</p> <p>3/1 mm</p>
<p>DATE</p> <p>17-05-2007</p>	 	<p>DRN / APPD.</p> <p>Y.H. TSANG/K.F. IM</p>
<p>FINISHED</p> <p>-----</p>	<p>MARUSHIN ELECTRIC MFG.CO.,LTD</p>	