

LED Input, CdS Cell Output, Cylindrical Package

The CdS output type photocoupler has a number of features such as a pure resistor with non-polar output on the output side, a simple circuit structure, and a wide output range. Hamamatsu provides various types of CdS output photocouplers. Please select the type best suited to your application. (See the Selection Guide on page 3.)

参考資料

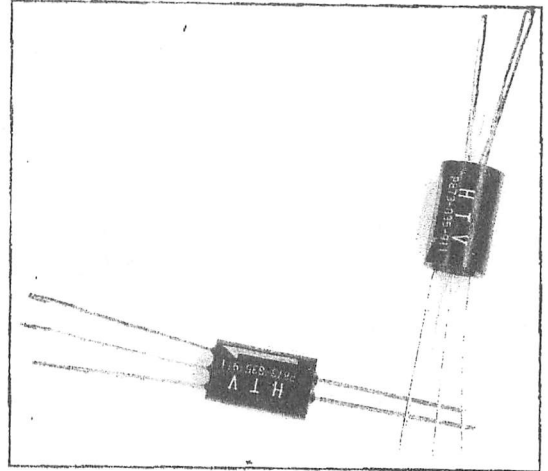


Figure 1: Dimensional Outline and Pin Connection (Unit:mm)

FEATURES

- Pure resistor with non-polar output
- Simple circuit structure
- Wide output range
- Cylindrical package
- UL listed : P873-G35-687, P873-24, P873-25 (E75221)

P873-G35-911 (

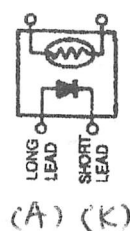
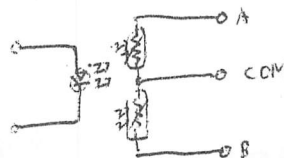
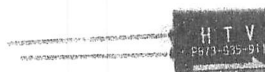
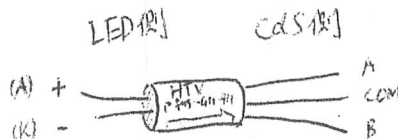
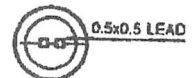
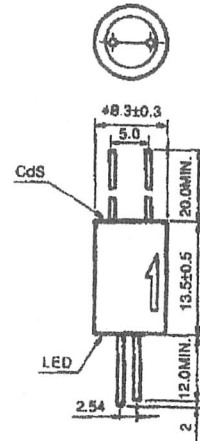
APPLICATIONS

- Audio instruments
- Electronic musical instruments
- Electronic measuring devices
- Triac drivers

MAXIMUM RATINGS (Ta = 25°C)

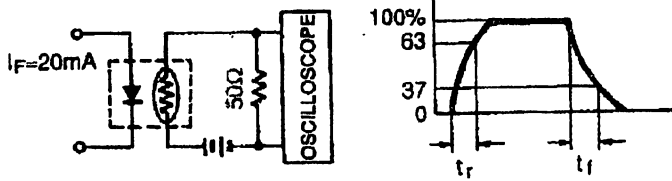
Parameters	Symbols	P873-G35-687	P873-G35-911	P873-G35-552	Unit	
		P873-G35-2010	P873-24, -25			
Input	Forward Current	25			mA	
	Reverse Voltage	4			Vdc	
	Power Dissipation	70			mW	
Output	Supply Voltage	200	400	100	Vdc	
	Power Dissipation	50	100	50	mW	
Operating Temperature		Topr	-30 ~ +50	-30 ~ +55 (1)	-30 ~ +55	°C
Storage Temperature		Tstg	-30 ~ +50	-30 ~ +55 (1)	-30 ~ +55	°C

(1) P873-24 and P873-25 are -30° ~ +60°C



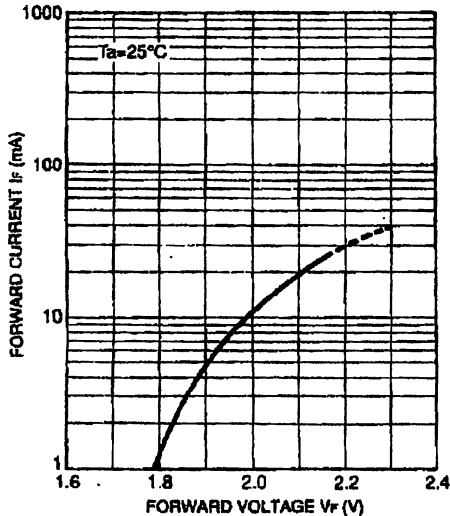
Parameters	Symbols	Conditions	P873-G35-911			Unit	
			Min.	Typ.	Max.		
Input	Forward Voltage	V_F	$I_F = 20\text{mA}$	—	2.1	—	Vdc
	Recommended Forward Current	I_F		—	20	—	mA
Output	ON Resistance	R_{ON}	$I_F = 20\text{mA}$	0.2	—	1.0	k Ω
	OFF Resistance	R_{OFF}	10 seconds after I_F goes OFF	1.0	—	—	M Ω
Transfer Characteristics	Input-Output Isolation Voltage	V_{iso}	RH40 ~ 60% 1, minute	5000	—	—	Vrms
	Rise Time (1)	t_r	$I_F = 20\text{mA}$	—	8.0	20	ms
	Fall Time (1)	t_f		—	8.0	20	ms

(1) Response Time Measuring Circuit



参考資料

Figure 4: LED Forward Current vs. Forward Voltage



P873-G35-911

Light-Dependent-Resistor-Output Optocoupler
Hamamatsu Corporation
Optocouplers

Number of Input Channels=1
Number of Output Channels=2
Input Type=LED Lamp
Photocell Type=LDR

P(D) Max.(W) Power Dissipation=30m W .

V(BR)Out Min.(V) Breakdown Volt=100

I(IN) Min.(A) Control In. Curr.=20m A

V(IN) Min.(V) Control In. Volt.=2.1 V

r(on) Max.(ohms) On-state Res.=1.0k Ω

r(off) Min.(Ohms) Off-state Res=1.0M Ω

t(off) Max. (s) Turn-off Time=20m Sec.

t(r) Max. (s) Rise Time=20m Sec .

Viso Max.(V) Isolation Voltage=5.0k/5000 V

Package=Axial

Figure 6: Rise/Fall Time vs. Load Resistance (P873-G35-380)

