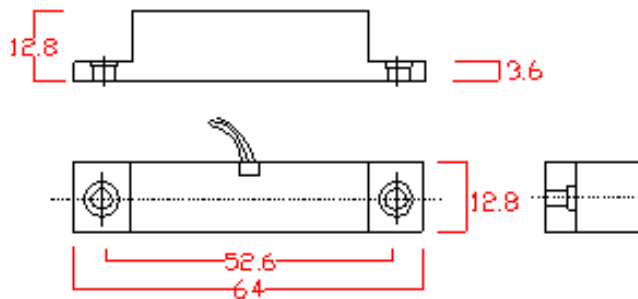
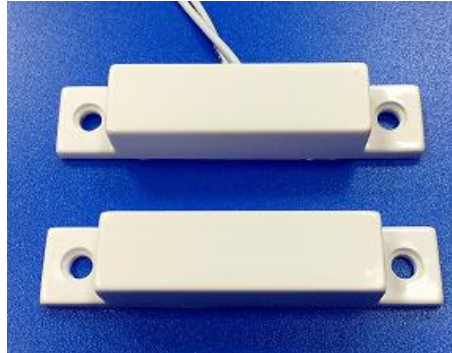




銀泰科技股份有限公司

SYNTEX TECH CORP.

PROXIMITY SENSOR SPS-320



Specifications

Switching Type	Normally Closed	Normally Open
Contact Power	10W	3W
Switching Current	0.5A	0.2A
Switching Voltage	100V	30V
Initial Resistance	200m Ω	200m Ω
Housing Material	ABS Case	
Operating Temperature	-25~+80 $^{\circ}$ C	
Sensing Distance	\geq 20mm	
Housing Colour	White	
Mounted Form	lead wire : 1007/24#350mm	

NO.503, SEC 2, JINLING RD.,
PINGCHENG CITY, TYOYUAN, TAIWAN
桃園縣平鎮市金陵路二段 503 號

TEL: +883 3 4679659
FAX:+ 886 3 4679649
[Http://www.syntextech.com.tw](http://www.syntextech.com.tw)