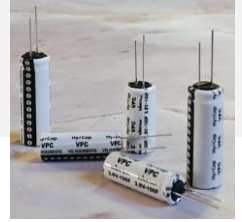


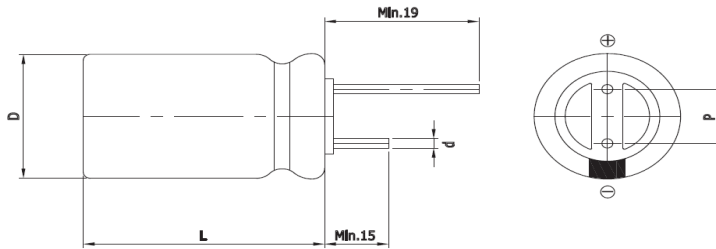
## Features

### VPC (Vina Pulse Capacitor)

- Low Self Discharge
- High Operating Voltage
- Wide Operating Temperature Range
- High Capacitance



## Drawing



Size	1335
D (Φ)	12.5 +1.0 Max
L (mm)	35.0 ±1.5
d (Φ)	0.8 ±0.1
P (mm)	5.0 ±0.5

## Specification

Item	Spec. value	Test methods					
Operating Voltage Range	2.5V to 3.8V (2.5V to 3.5V @ 85°C)						
Operating Temp. Range	-25 ~ 85°C (-40 ~ 85°C @ in Li/SOCL2 battery system)						
Capacitance Tolerance	-10% ~ +30%						
Load Life @ 70°C, 3.8V	Capacitance : ≤ 30% of initial value ESR : Less than 200% of spec. Appearance : No abnormality	Temperature: 70±2°C, 85±2°C Time : 1,000 hours Voltage : 3.8V, 3.5V and measure the floating charge characteristics after returning to normal temperature and humidity.					
Load Life @ 85°C, 3.5V							
Temperature Cycle		Temperature: 85±2°C, -40±2°C Duration: 30 min / Numbers: 100 times					
Cycle Life		<table border="1"> <tr> <td>100% DOD</td> <td>50% DOD</td> <td>1% DOD</td> </tr> <tr> <td>20,000Cycle</td> <td>100,000Cycle</td> <td>500,000Cycle</td> </tr> </table> Temperature : 25±2°C Cut-off Voltage : 2.5V	100% DOD	50% DOD	1% DOD	20,000Cycle	100,000Cycle
100% DOD	50% DOD	1% DOD					
20,000Cycle	100,000Cycle	500,000Cycle					
Shelf life	Capacitance : ≤ 10% of initial value ESR : Less than 100% of spec.	Temp. : below 25°C, No Electrical Charge, Time : 3 years *VPC recommends charging at rated voltage every six months					

Part Number	Rated Voltage (V)	Rated Capacitance (F) #1	ESR <sub>DC</sub> (mΩ)	ESR <sub>AC</sub> (mΩ)	Leakage Current (μA)	Self Discharge (V) #1	Rated Current (A)	Pulse Current (A) #2	Weight (g)
VEL13353R8257G	3.8 Surge Voltage (4.0V)	250 @ 25°C	100 @ 25°C 100msec	50 @ 25°C 1kHz	5 @ 25°C 72hr	Over 97% @ 25°C	0.75 @ 25°C	5.0 @ 25°C	8.2±0.2

#1 Reference IEC62813 4.2  
#2 1sec. Discharge to 3.2V

**※ WARNING : precautions must be taken to ensure that device leads are not shorted**

VINA Tech Co., Ltd.

Tel : +82 63 715 3020

E-mail : hycap@vina.co.kr

Web : [www.vina.co.kr](http://www.vina.co.kr)

国内正規代理店【東機通商株式会社】 E-mail: [vina.support@toki-com.co.jp](mailto:vina.support@toki-com.co.jp)

\*個人のお客様のお取引及びお問い合わせはお受けできません。

\*お問い合わせの内容によりましてはお答えできない事が御座いますので、予めご了承下さい。